



IVI-4.2: IviDmm Class Specification

October 14, 2016 Edition
Revision 4.1

Important Information

The IviDmm Class Specification (IVI-4.2) is authored by the IVI Foundation member companies. For a vendor membership roster list, please visit the IVI Foundation web site at www.ivifoundation.org, or contact the IVI Foundation.

The IVI Foundation wants to receive your comments on this specification. See the IVI Foundation **web site** for contact information.

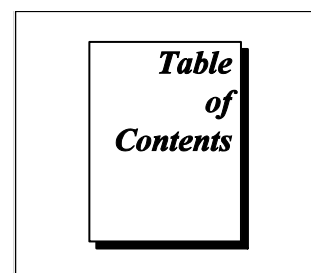
Warranty

The IVI Foundation and its member companies make no warranty of any kind with regard to this material, including, but not limited to, the implied warranties of merchantability and fitness for a particular purpose. The IVI Foundation and its member companies shall not be liable for errors contained herein or for incidental or consequential damages in connection with the furnishing, performance, or use of this material.

Trademarks

Product and company names listed are trademarks or trade names of their respective companies.

No investigation has been made of common-law trademark rights in any work.



IviDmm Class Specification.....	8
1.Overview of the IviDmm Specification	10
1.1.Introduction	10
1.2.IviDmm Class Overview	10
1.3.References	10
1.4.Definitions of Terms and Acronyms	10
2.IviDmm Class Capabilities.....	12
2.1.Introduction	12
2.2.IviDmm Group Names	12
2.3.Repeated Capability Names	13
2.4.Boolean Attribute and Parameter Values.....	13
2.5..NET Namespace	13
2.6..NET IviDmm Session Factory	13
3.General Requirements	16
3.1.Minimum Class Compliance	16
3.1.1.Disable	17
3.2.Capability Group Compliance.....	17

4.IviDmmBase Capability Group	18
4.1.Overview	18
4.2.IviDmmBase Attributes	18
4.2.1.Function	19
4.2.2.Range	25
4.2.3.AutoRange (IVI .NET only).....	28
4.2.4.Resolution Absolute	29
4.2.5.Trigger Delay	30
4.2.6.Trigger Delay Auto (IVI .NET Only).....	32
4.2.7.Trigger Source	33
4.3.IviDmmBase Functions.....	37
4.3.1.Abort	38
4.3.2.Configure Measurement	39
4.3.3.Configure Trigger	41
4.3.4.Fetch	42
4.3.5.Initiate	45
4.3.6.Is Out Of Range (IVI.NET Only).....	46
4.3.7.Is Over Range	47
4.3.8.Is Under Range (IVI.NET Only).....	48
4.3.9.Read	49
4.4.IviDmmBase Behavior Model	51
5.IviDmmACMeasurement Extension Group	53
5.1.IviDmmACMeasurement Overview	53
5.2.IviDmmACMeasurement Attributes	53
5.2.1.AC Max Freq	54
5.2.2.AC Min Freq	55
5.3.IviDmmACMeasurement Functions	56
5.3.1.Configure AC Bandwidth	57
5.4.IviDmmACMeasurement Behavior Model.....	58
5.5.IviDmmACMeasurement Compliance Notes	58
6.IviDmmFrequencyMeasurement Extension Group	59
6.1.IviDmmFrequencyMeasurement Overview	59
6.2.IviDmmFrequencyMeasurement Attributes.....	59
6.2.1.Frequency Voltage Range	60
6.2.2.Frequency Voltage Range Auto (IVI.NET Only).....	62
6.3.IviDmmFrequencyMeasurement Functions.....	63
6.3.1.Configure Frequency Voltage Range (IVI-C Only).....	64
6.4.IviDmmFrequencyMeasurement Behavior Model.....	65
6.5.IviDmmFrequencyMeasurement Compliance Notes	65
7.IviDmmTemperatureMeasurement Extension Group.....	66
7.1.IviDmmTemperatureMeasurement Overview.....	66
7.2.IviDmmTemperatureMeasurement Attributes.....	66
7.2.1.Temperature Transducer Type	67
7.3.IviDmmTemperatureMeasurement Functions.....	70
7.3.1.Configure Transducer Type (IVI-C Only).....	71
7.4.IviDmmTemperatureMeasurement Behavior Model	72
7.5.IviDmmTemperatureMeasurement Compliance Notes.....	72
8.IviDmmThermocouple Extension Group.....	73
8.1.IviDmmThermocouple Extension Group Overview	73

8.2.IviDmmThermocouple Attributes	73
8.2.1.Thermocouple Fixed Reference Junction.....	74
8.2.2.Thermocouple Reference Junction Type	75
8.2.3.Thermocouple Type	77
8.3.IviDmmThermocouple Functions	82
8.3.1.Configure Fixed Reference Junction (IVI-C Only).....	83
8.3.2.Configure Thermocouple	84
8.4.IviDmmThermocouple Behavior Model	85
8.5.IviDmmThermocouple Compliance Notes	85
9.IviDmmResistanceTemperatureDevice Extension Group	86
9.1.IviDmmResistanceTemperatureDevice Extension Group Overview	86
9.2.IviDmmResistanceTemperatureDevice Attributes	86
9.2.1.RTD Alpha	87
9.2.2.RTD Resistance	88
9.3.IviDmmResistanceTemperatureDevice Functions	89
9.3.1.Configure RTD	90
9.4.IviDmmResistanceTemperatureDevice Behavior Model.....	91
9.5.IviDmmResistanceTemperatureDevice Compliance Notes	91
10.IviDmmThermistor Extension Group	92
10.1.IviDmmThermistor Extension Group Overview	92
10.2.IviDmmThermistor Attributes	92
10.2.1.Thermistor Resistance	93
10.3.IviDmmThermistor Functions.....	94
10.3.1.Configure Thermistor (IVI-C Only).....	95
10.4.IviDmmThermistor Behavior Model	96
10.5.IviDmmThermistor Compliance Notes	96
11.IviDmmMultiPoint Extension Group	97
11.1.IviDmmMultiPoint Extension Group Overview	97
11.2.IviDmmMultiPoint Attributes	97
11.2.1.Measure Complete Destination	98
11.2.2.Sample Count	102
11.2.3.Sample Interval	103
11.2.4.Sample Trigger	104
11.2.5.Trigger Count	108
11.3.IviDmmMultiPoint Functions	109
11.3.1.Configure Measure Complete Destination (IVI-C Only)	110
11.3.2.Configure Multi Point	111
11.3.3.Fetch Multi Point	113
11.3.4.Read Multi Point	117
11.4.IviDmmMultiPoint Behavior Model	120
12.IviDmmTriggerSlope Extension Group.....	122
12.1.IviDmmTriggerSlope Extension Group Overview	122
12.2.IviDmmTriggerSlope Attributes.....	122
12.2.1.Trigger Slope	123
12.3.IviDmmTriggerSlope Functions.....	125
12.3.1.Configure Trigger Slope (IVI-C Only).....	126
12.4.IviDmmTriggerSlope Behavior Model	127

13.IviDmmSoftwareTrigger Extension Group	128
13.1.IviDmmSoftwareTrigger Extension Group Overview	128
13.2.IviDmmSoftwareTrigger Functions	128
13.2.1.IviDmm_SendSoftwareTrigger	128
13.3.IviDmmSoftwareTrigger Behavior Model	128
13.4.IviDmmSoftwareTrigger Compliance Notes	128
14.IviDmmDeviceInfo Extension Group	129
14.1.IviDmmDeviceInfo Extension Group Overview	129
14.2.IviDmmDeviceInfo Attributes.....	129
14.2.1.Aperture Time	130
14.2.2.Aperture Time Units	131
14.3.IviDmmDeviceInfo Functions.....	132
14.3.1.Get Aperture Time Info (IVI-C Only)	133
14.4.IviDmmDeviceInfo Behavior Model	134
15.IviDmmAutoRangeValue Extension Group	135
15.1.IviDmmAutoRangeValue Extension Group Overview	135
15.2.IviDmmAutoRangeValue Attributes	135
15.2.1.Auto Range Value (IVI-C and IVI-COM Only).....	136
15.3.IviDmmAutoRangeValue Functions	137
15.3.1.Get Auto Range Value (IVI-C Only)	138
15.4.IviDmmAutoRangeValue Behavior Model	139
15.5.IviDmmAutoRangeValue Compliance Notes	139
16.IviDmmAutoZero Extension Group.....	140
16.1.IviDmmAutoZero Extension Group Overview	140
16.2.IviDmmAutoZero Attributes	140
16.2.1.Auto Zero	141
16.3.IviDmmAutoZero Functions	143
16.3.1.Configure Auto Zero Mode (IVI-C Only).....	144
16.4.IviDmmAutoZero Behavior Model.....	145
17.IviDmmPowerLineFrequency Extension Group	146
17.1.IviDmmPowerLineFrequency Extension Group Overview	146
17.2.IviDmmPowerLineFrequency Attributes	146
17.2.1.Powerline Frequency	147
17.3.IviDmmPowerLineFrequency Functions	148
17.3.1.Configure Power Line Frequency (IVI-C Only)	149
17.4.IviDmmPowerLineFrequency Behavior Model.....	150
18.IviDmm Attribute ID Definitions	151
18.1.IviDmm Obsolete Attribute Names	152
18.2.IviDmm Obsolete Attribute ID Values	152
19.IviDmm Attribute Value Definitions	153
19.1.IviDmm Obsolete Attribute Value Names	166

20.IviDmm Function Parameter Value Definitions	168
21.IviDmm Error, Completion Code, and Exception Class Definitions ...	169
21.1.IviDmm Obsolete Error and Completion Code Names	170
21.2.IviDmm Obsolete Error and Completion Code Values	170
22.IviDmm Hierarchies	171
22.1.IviDmm ,NET Hierarchy.....	171
22.1.1.IviDmm.NET Interfaces	173
22.1.2..NET Interface Reference Properties.....	174
22.2.IviDmm COM Hierarchy	175
22.2.1.IviDmm COM Interfaces	177
22.2.2.Interface Reference Properties	178
22.2.3.IviDmm COM Category	178
22.3.IviDmm C Function Hierarchy	179
22.3.1.Ivi Dmm Obsolete Function Names	181
22.4.IviDmm C Attribute Hierarchy	182
A. Specific Driver Development Guidelines	184
A.1. Introduction	184
A.2. Disabling Unused Extension Groups	184
A.3. Special Consideration for Query Instrument Status	185
A.4. Special Considerations for Sample Trigger.....	185
A.5. Special Considerations for Auto Range Value	186
B. Interchangeability Checking Rules.....	187
B.1. Introduction	187
B.2. When to Perform Interchangeability Checking.....	187
B.3. Interchangeability Checking Rules	187

IviDmm Class Specification

IviDmm Revision History

This section is an overview of the revision history of the IviDmm specification.

Table 1-1 IviDmm Class Specification Revisions

Revision Number	Date of Revision	Revision Notes
Revision 1.0	August 21, 1998	First Approved Version.
Revision 2.0	November 22, 1999	This edition refines the organization of the specification based on feedback at the July 1999 IVI Foundation meeting. It replaces the IviDmm Miscellaneous Capabilities extension group by defining a new extension for every attribute in the group. It also defines new extension groups for AC, Frequency, and Temperature measurements.
Revision 3.0 (VC1)	July 27, 2001	Reformatted to adhere to formatting specified in <i>IVI – 3.4: API Style Guide</i> . Added COM interface.
Revision 3.0 (VC2)	November 8, 2001	Updates from Boston meeting, Steve Greer’s review feedback, J. Harvey’s COM feedback, and internal review.
Revision 3.0 (VC3)	December 18, 2001	Updates from Austin meeting. Some IDL changes still needed.
Revision 3.0(VC4)	January 30, 2002	Updates from review feedback. Some IDL changes still needed.
Revision 3.0 (VC5)	March 8, 2002	Update TimeOut parameter names with MaxTimeMilliseconds. Updated "IviDmmTriggerSourceSoftware" to agree with IDL and Trigger source value of "IviDmmTriggerSourceSwTrigFunc". Added updated IDL.
Revision 3.0	April 16, 2002	Accepted changes. Removed draft. Added release IDL.
Revision 3.0	January 19, 2004	Changed name of ‘IsOverRange’ to ‘IsOver’ for Measurement.IsOverRange COM method prototype. Change reflected in body of specification and IviDmm IDL version 13.
Revision 3.0	April 29, 2008	Editorial change to update the IVI Foundation contact information in the Important Information section to remove obsolete address information and refer only to the IVI Foundation web site.
Revision 4.0	June 9, 2010	Incorporated IVI.NET
Revision 4.1	October 14, 2010	Correct reference to DelayAuto property in Sec. 22.1

Table 1-1 IviDmm Class Specification Revisions

Revision 4.1	August 25, 2011	Editorial IVI.NET change. Change references to process-wide locking to AppDomain-wide locking. Add an overload to the Create factory method that takes locking related parameters.
Revision 4.1	November 12, 2013	Editorial change in Section 19 to update IVI.NET attribute value names for Auto Range attribute
Revision 4.1	November 26, 2014	Editorial change to fix the formatting of section 6.3.1
Revision 4.1	October 14, 2016	Editorial Change – Modified header text for table 21.2 to indicate that the messages do not apply to .NET exceptions.

API Versions

Architecture	Drivers that comply with version 4.0 comply with all of the versions below
C	2.0, 3.0, 4.0
COM	3.0, 4.0
.NET	4.0

Drivers that comply with this version of the specification also comply with earlier, compatible, versions of the specification as shown in the table above. The driver may benefit by advertising that it supports all the API versions listed in the table above.

1. Overview of the IviDmm Specification

1.1. Introduction

This specification defines the IVI class for digital multimeters (DMMs). The IviDmm class is designed to support the typical DMM as well as common extended functionality found in more complex instruments. This section summarizes the *IviDmm Class Specification* and contains general information that the reader might need in order to understand, interpret, and implement aspects of this specification. These aspects include the following:

- IviDmm class overview
- The definitions of terms and acronyms
- References

1.2. IviDmm Class Overview

This specification defines the IVI class for digital multimeters (DMMs). The IviDmm class is designed to support the typical DMM as well as common extended functionality found in more complex instruments. The IviDmm class conceptualizes a DMM as an instrument that can measure scalar quantities of an input signal and can be applied to a wide variety of instruments. Typically the measured quantity is a voltage (AC and DC), current, or resistance. However, the IviDmm class can support instruments that measure other quantities such as temperature and frequency etc.

The IviDmm class is divided into a base capability group and several extension groups. The base capability group is used to configure a DMM for a typical measurement (this includes setting the measurement function, desired range, desired resolution, and trigger source), initiating that measurement, and returning a measured value. The IviDmm base capability group is described in Section 4, *IviDmmBase Capability Group*.

Many DMMs support measurement types that require additional parameters to be configured, such as the minimum and maximum frequency of the input signal for AC measurements. The IviDmm class defines extension groups for each measurement type that requires these additional parameters.

The IviDmm class also defines an extension group called IviDmmMultiPoint. The IviDmmMultiPoint extension group is used to configure DMMs that can acquire multiple measurements based on multiple triggers and take multiple measurements per trigger. This type of instrument used in conjunction with a scanner is typically used to implement a scanning DMM. The IviDmmMultiPoint extensions are described in Section 11, *IviDmmMultiPoint Extension Group*.

In addition, the IviDmm class defines extension groups that configure advanced settings such as auto-zero and power line frequency, or return additional information about the current state of the instrument such as aperture time. These extension groups are defined in Sections 12 through 17.

1.3. References

Several other documents and specifications are related to this specification. These other related documents are as follows:

- IVI-3.1: Driver Architecture Specification
- IVI-3.2: Inherent Capabilities Specification
- IVI-3.3: Standard Cross Class Capabilities Specification
- IVI-3.18: IVI.NET Utility Classes and Interfaces Specification
- IVI- 5.0: Glossary

1.4. Definitions of Terms and Acronyms

This section defines terms and acronyms that are specific to the IviDmm class.

Temperature Transducer	A device that converts thermal energy into electrical energy. Used for measuring temperature.
Reference Junction	Also known as the Cold Junction. The junction of a thermocouple that is kept at a known temperature or one for which the temperature may be measured.

Refer to *IVI-5.0: Glossary* for a description of more terms used in this specification.

2.IviDmm Class Capabilities

2.1.Introduction

The IviDmm specification divides DMM capabilities into a base capability group and multiple extension capability groups. Each capability group is discussed in a separate section. This section defines names for each capability group and gives an overview of the information presented for each capability group.

2.2.IviDmm Group Names

The capability group names for the IviDmm class are defined in the following table. The Group Name is used to represent a particular capability group and is returned as one of the possible group names from the Class Group Capabilities attribute.

Table 2-1. IviDmm Group Names

Group Name	Description
IviDmmBase	Base Capability Group: DMM that complies with the IviDmmBase Capability Group.
IviDmmACMeasurement	Extension Group: DMM with the capability to measure AC voltage, AC current, AC plus DC voltage, and AC plus DC current.
IviDmmFrequencyMeasurement	Extension Group: DMM with the capability to measure frequency and period.
IviDmmTemperatureMeasurement	Extension Group: DMM with the capability to measure temperature.
IviDmmThermocouple	Extension Group: DMM with the capability to measure temperature using a thermocouple.
IviDmmResistanceTemperatureDevice	Extension group: DMM with the capability to measure temperature using a temperature resistance device.
IviDmmThermistor	Extension group: DMM with the capability to measure temperature using a thermistor.
IviDmmMultiPoint	Extension Group: DMM with the capability to accept multiple triggers and acquire multiple samples per trigger.
IviDmmTriggerSlope	Extension Group: DMM with the capability to specify the trigger slope.
IviDmmSoftwareTrigger	Extension Group: DMM with the capability to send a software trigger.
IviDmmDeviceInfo	Extension Group: DMM with the capability to return extra information concerning the instrument's state such as aperture time.
IviDmmAutoRangeValue	Extension Group: DMM with the capability to return the actual range when auto ranging.
IviDmmAutoZero	Extension Group: DMM with the capability to take an auto-zero reading.

Table 2-1. IviDmm Group Names

Group Name	Description
IviDmmPowerLineFrequency	Extension Group: DMM with the capability to specify the power line frequency.

2.3.Repeated Capability Names

The IviDmm Class Specification does not define repeated capabilities.

2.4.Boolean Attribute and Parameter Values

This specification uses True and False as the values for Boolean attributes and parameters. The following table defines the identifiers that are used for True and False in the IVI.NET, IVI-COM, and IVI-C architectures.

Boolean Value	IVI.NET Identifier	IVI-COM Identifier	IVI-C Identifier
True	true	VARIANT_TRUE	VI_TRUE
False	false	VARIANT_FALSE	VI_FALSE

2.5..NET Namespace

The .NET namespace for the IviDmm class is `Ivi.Dmm`.

2.6..NET IviDmm Session Factory

The IviDmm .NET assembly contains a factory method called `Create` for creating instances of IviDmm class-compliant IVI.NET drivers from driver sessions and logical names. `Create` is a static method accessible from the static IviDmm class.

Refer to *IVI-3.5: Configuration Server Specification* for a description of how logical names and session names are defined in the configuration store.

Refer to Section 8, *IVI.NET Specific Driver Constructor*, of *IVI-3.2: Inherent Capabilities Specification*, for more details on how the `idQuery`, `reset`, and `options` parameters affect the instantiation of the driver.

Refer to Section 4.3.11, *Multithread Safety*, of *IVI-3.1: Driver Architecture Specification* for a complete description of IVI.NET driver locking. Refer to Section 8, Table 8.2 *Required Lock Type Behavior for Drivers With the Same Access Key*, of *IVI-3.2, Inherent Capability Specification*, for an explanation of how the values for `lockType` and `accessKey` are used to determine the kind of multithreaded lock to use for the driver instance.

.NET Method Prototype

```
IviDmm Ivi.Dmm.Create(String name);
IviDmm Ivi.Dmm.Create(String name,
                      Boolean idQuery,
                      Boolean reset);
IviDmm Ivi.Dmm.Create(String name,
                      Boolean idQuery,
                      Boolean reset,
                      String options);
```

```

IIviDmm Ivi.Dmm.Create(String resourceName,
                        Boolean idQuery,
                        Boolean reset,
                        LockType lockType,
                        String accessKey,
                        String options);

```

Parameters

Inputs	Description	Base Type
name	A session name or a logical name that points to a session that uses an IVI.NET IviDmm class-compliant driver.	String
idQuery	Specifies whether to verify the ID of the instrument. The default is False.	Boolean
reset	Specifies whether to reset the instrument. The default is False.	Boolean
lockType	Specifies whether to use AppDomain-wide locking or machine-wide locking.	Ivi.Driver.LockType
accessKey	Specifies a user-selectable access key to identify the lock. Driver instances that are created with the same accessKey will be protected from simultaneous access by multiple threads within an AppDomain or across AppDomains, depending upon the value of the lockType parameter.	String
options	A string that allows the user to specify the initial values of certain inherent attributes. The default is an empty string.	String

Outputs	Description	Base Type
Return Value	Interface pointer to the IIviDmm interface of the driver referenced by session.	IIviDmm

Defined Values

Name	Description	
	Language	Identifier
AppDomain	The lock is AppDomain-wide.	
	.NET	Ivi.Driver.LockType.AppDomain
Machine	The lock is machine-wide.	
	.NET	Ivi.Driver.LockType.Machine

.NET Exceptions

The *IVI-3.2: Inherent Capabilities Specification* defines general exceptions that may be thrown, and warning events that may be raised, by this method.

Usage

To create a driver that implements the IviDmm instrument class API from the logical name “My LogicalName” use the following:

```
IIVI dmm = IviDmm.Create("MyLogicalName");
```

In this case, the ID of the instrument will not be verified, the instrument will not be reset, and options will be supplied from the configuration store and/or driver defaults.

3. General Requirements

This section describes the general requirements a specific driver must meet in order to be compliant with this specification. In addition, it provides general requirements that specific drivers must meet in order to comply with a capability group, attribute, or function.

3.1. Minimum Class Compliance

To be compliant with the IviDmm Class Specification, an IVI specific driver shall conform to all of the requirements for an IVI class-compliant specific driver as specified in *IVI-3.1: Driver Architecture Specification*, implement the inherent capabilities that *IVI-3.2: Inherent IVI Capabilities Specification* defines, and implements the IviDmmBase capability group.

3.1.1.Disable

Refer to *IVI-3.2: Inherent Capabilities Specification* for the prototype of this function. The IviDmm specification does not define additional requirements on the Disable function.

3.2.Capability Group Compliance

IVI-3.1: Driver Architecture Specification defines the general rules for a specific driver to be compliant with a capability group.

4.IviDmmBase Capability Group

4.1.Overview

The IviDmmBase Capability Group supports DMMs that take a single measurement at a time. The IviDmmBase Capability Group defines attributes and their values to configure the type of measurement and how the measurement is to be performed. These attributes include the measurement function, range, resolution, and trigger source. The IviDmmBase capability group also includes functions for configuring the DMM as well as initiating and retrieving measurements.

4.2.IviDmmBase Attributes

The IviDmmBase capability group defines the following attributes:

- Function
- Range
- Resolution Absolute
- Trigger Delay
- Trigger Source

This section describes the behavior and requirements of each attribute. The actual value for each attribute ID is defined in Section 18, *IviDmm Attribute ID Definitions*.

4.2.1.Function

Data Type	Access	Applies To	Coercion	High Level Functions
ViInt32	R/W	N/A	None	Configure Measurement

.NET Property Name

MeasurementFunction

.NET Enumeration Name

Ivi.Dmm.MeasurementFunction

COM Property Name

Function

COM Enumeration Name

IviDmmFunctionEnum

C Constant Name

IVIDMM_ATTR_FUNCTION

Description

Specifies the measurement function.

The value of this attribute determines the units for the Range and Resolution Absolute attributes, and the measurement values that are returned by the Read, Read Multiple Point, Fetch, and Fetch Multiple Point functions.

Defined Values

<i>Name</i>	<i>Description</i>	
	<i>Language</i>	<i>Identifier</i>
DC Volts	Sets the DMM to measure DC voltage.	
	.NET	MeasurementFunction.DCVolts
	C	IVIDMM_VAL_DC_VOLTS
	COM	IviDmmFunctionDCVolts
AC Volts	Sets the DMM to measure AC voltage. Use the IviDmmACMeasurement extension group to configure additional parameters for this measurement type.	
	.NET	MeasurementFunction.ACVolts
	C	IVIDMM_VAL_AC_VOLTS
	COM	IviDmmFunctionACVolts
DC Current	Sets the DMM to measure DC current..	
	.NET	MeasurementFunction.DCCurrent
	C	IVIDMM_VAL_DC_CURRENT
	COM	IviDmmFunctionDCCurrent
AC Current	Sets the DMM to measure AC current. Use the IviDmmACMeasurement extension group to configure additional parameters for this measurement type.	
	.NET	MeasurementFunction.ACCurrent
	C	IVIDMM_VAL_AC_CURRENT
	COM	IviDmmFunctionACCurrent
2 Wire Resistance	Sets the DMM to measure 2-wire resistance.	
	.NET	MeasurementFunction.TwoWireResistance
	C	IVIDMM_VAL_2_WIRE_RES
	COM	IviDmmFunction2WireRes
4 Wire Resistance	Sets the DMM to measure 4-wire resistance.	
	.NET	MeasurementFunction.FourWireResistance
	C	IVIDMM_VAL_4_WIRE_RES
	COM	IviDmmFunction4WireRes
AC Plus DC Volts	Sets the DMM to measure AC plus DC voltage. Use the IviDmmACMeasurement extension group to configure additional parameters for this measurement type.	
	.NET	MeasurementFunction.ACPlusDCVolts
	C	IVIDMM_VAL_AC_PLUS_DC_VOLTS
	COM	IviDmmFunctionACPlusDCVolts

<i>Name</i>	<i>Description</i>	
	<i>Language</i>	<i>Identifier</i>
AC Plus DC Current	Sets the DMM to measure AC plus DC current. Use the IviDmmACMeasurement extension group to configure additional parameters for this measurement type.	
	.NET	MeasurementFunction.ACPlusDCCurrent
	C	IVIDMM_VAL_AC_PLUS_DC_CURRENT
	COM	IviDmmFunctionACPlusDCCurrent
Frequency	Sets the DMM to measure frequency. Use the IviDmmFrequencyMeasurement extension group to configure additional parameters for this measurement type.	
	.NET	MeasurementFunction.Frequency
	C	IVIDMM_VAL_FREQ
	COM	IviDmmFunctionFreq
Period	Sets the DMM to measure period. Use the IviDmmFrequencyMeasurement extension group to configure additional parameters for this measurement type.	
	.NET	MeasurementFunction.Period
	C	IVIDMM_VAL_PERIOD
	COM	IviDmmFunctionPeriod
Temperature	Sets the DMM to measure temperature. Use the IviDmmTemperatureMeasurement extension group to configure additional parameters for this measurement type.	
	.NET	MeasurementFunction.Temperature
	C	IVIDMM_VAL_TEMPERATURE
	COM	IviDmmFunctionTemperature

.NET Exceptions

The *IVI-3.2: Inherent Capabilities Specification* defines general exceptions that may be thrown, and warning events that may be raised, by this property.

Compliance Notes

1. If an IviDmm specific driver implements any of the defined values in the following table, it shall also implement the corresponding capability group:

Value	Required Capability Group
AC Volts	IviDmmACMeasurement
AC Current	IviDmmACMeasurement
AC Plus DC Volts	IviDmmACMeasurement
AC Plus DC Current	IviDmmACMeasurement

Frequency	IviDmmFrequencyMeasurement
Period	IviDmmFrequencyMeasurement
Temperature	IviDmmTemperatureMeasurement

2. If an IVI-C IviDmm specific driver defines additional values for this attribute, the actual values shall be greater than or equal to Function Specific Extension Base.
3. If an IVI-C IviDmm class driver defines additional values for this attribute, the actual values shall be greater than or equal to Function Class Extension Base and less than Function Specific Extension Base.
4. When an IVI-COM specific driver implements this attribute with additional elements in its instrument specific interfaces, it is recommended that the actual values of the additional elements be greater than or equal to Function Specific Extension Base.

See Section 19, *Attribute Value Definitions*, for the definitions of Function Specific Extension Base and Function Class Extension Base.

4.2.2.Range

Data Type	Access	Applies To	Coercion	High Level Functions
ViReal64	R/W	N/A	Up	Configure Measurement

.NET Property Name

Range

COM Property Name

Range

C Constant Name

IVIDMM_ATTR_RANGE

Description

The behavior is different for IVI-C/IVI-COM and IVI.NET as follows:

IVI-C/IVI-COM Specifies the measurement range. Positive values represent the absolute value of the maximum measurement expected. The specific driver is expected to coerce this value to the appropriate range for the instrument. Negative values represent the Auto Range mode.

IVI.NET Specifies the measurement range. Querying this value will return the range corresponding to the maximum input value based on the rest of the instrument configuration. Setting this property sets AutoRange to Auto.Off. If the property is set to a negative value and that negative value is valid for the current function (for instance DC Volts) the instrument will configure to measure that value.

There is a dependency between the Range attribute and the Resolution Absolute attribute. The allowed values of Resolution Absolute attribute depend on the Range attribute.

Typically, when the value of the Range attribute changes, the instrument settings that correspond to the Resolution Absolute attribute change as well. This is true regardless of how the change of measurement range occurs.

There are two possible ways that the measurement range can change. The application program can set the value of the Range attribute. Or, the instrument changes the measurement range because Range attribute is set to Auto Range On and the input signal changes. In both cases, the instrument resolution is likely to change.

The value of the Function attribute determines the units for this attribute. The following table shows the defined values for the Function attribute and the corresponding units for the Range attribute.

Values for FUNCTION ATTRIBUTE	Units for RANGE ATTRIBUTE
DC Volts	Volts
AC Volts	Volts RMS
DC Current	Amps
AC Current	Amps
2 Wire Resistance	Ohms

Values for FUNCTION ATTRIBUTE	Units for RANGE ATTRIBUTE
4 Wire Resistance	Ohms
AC Plus DC Volts	Volts
AC Plus DC Current	Amps
Frequency	Hertz
Period	Seconds
Temperature	Degrees Celsius

Defined Values

There are no defined values for IVI.NET

Name	Description	
	Language	Identifier
Auto Range On	Sets the DMM to calculate the range before each measurement automatically. You can obtain the actual range the DMM is currently using by getting the value of the Auto Range Value attribute in the <code>IviDmmAutoRangeValue</code> extension group. Setting this attribute to a manual range or to Auto Range Off disables auto-ranging.	
	C	IVIDMM_VAL_AUTO_RANGE_ON
	COM	<code>IviDmmAutoRangeOn</code>
Auto Range Off	Disables auto-ranging. The DMM sets the range to the value it most recently calculated. Further queries of this attribute return the actual range.	
	C	IVIDMM_VAL_AUTO_RANGE_OFF
	COM	<code>IviDmmAutoRangeOff</code>
Auto Range Once	Sets the DMM to calculate the range before the next measurement. The DMM uses this range value for all subsequent measurements. Further queries of this attribute return the actual range.	
	C	IVIDMM_VAL_AUTO_RANGE_ONCE
	COM	<code>IviDmmAutoRangeOnce</code>

.NET Exceptions

The *IVI-3.2: Inherent Capabilities Specification* defines general exceptions that may be thrown, and warning events that may be raised, by this property.

Compliance Notes

1. If an IVI-C `IviDmm` specific driver defines additional values for this attribute, the magnitude of the actual values shall be greater than or equal to Range Specific Extension Base.

2. If an IVI-C IviDmm class driver defines additional values for this attribute, the magnitude of the actual values shall be greater than or equal to Range Class Extension Base and less than Range Specific Extension Base.
3. When an IVI-COM specific driver implements this attribute with additional elements in its instrument specific interfaces, it is recommended that the actual values of the additional elements be greater than or equal to Range Specific Extension Base.

See Section 19, *Attribute Value Definitions*, for the definitions of Range Specific Extension Base and Range Class Extension Base.

4.2.3.AutoRange (IVI .NET only)

Data Type	Access	Applies To	Coercion	High Level Functions
ViInt32	R/W	N/A	N/A	Configure Measurement

.NET Property Name

AutoRange

.NET Enumeration Name

Auto

COM Property Name

N/A

C Constant Name

N/A

Description

Specifies if the instrument sets the range of the instrument automatically, as described in the following table.

Note that IVI-COM and IVI-C achieve this behavior by setting Range to defined values.

<i>Name</i>	<i>Description</i>		
		<i>Language</i>	<i>Identifier</i>
Auto On	Sets the DMM to calculate the range before each measurement automatically. You can obtain the actual range the DMM is currently using by getting the value of the Range attribute. Setting the Range attribute also sets the Auto Range attribute to Auto Range Off.		
		.NET	Auto.On
Auto Off	Disables auto-ranging. The DMM sets the Range attribute to the value it most recently calculated. Further queries of the Range attribute return the actual range.		
		.NET	Auto.Off
Auto Once	Sets the DMM to calculate the range before the next measurement. After the next measurement, the DMM uses the calculated range value for all subsequent measurements. Further queries of the Range attribute return the actual range.		
		.NET	Auto.Once

.NET Exceptions

The *IVI-3.2: Inherent Capabilities Specification* defines general exceptions that may be thrown, and warning events that may be raised, by this property.

4.2.4. Resolution Absolute

Data Type	Access	Applies To	Coercion	High Level Functions
ViReal64	R/W	N/A	Down	Configure Measurement

.NET Property Name

Resolution

COM Property Name

Resolution

C Constant Name

IVIDMM_ATTR_RESOLUTION_ABSOLUTE

Description

Specifies the measurement resolution in absolute units.

The value of the Function attribute determines the units for this attribute. The following table shows the defined values for the Function attribute and the corresponding units for the Resolution Absolute attribute.

Values for FUNCTION ATTRIBUTE	Units for RESOLUTION ABSOLUTE ATTRIBUTE
DC Volts	Volts
AC Volts	Volts RMS
DC Current	Amps
AC Current	Amps RMS
2 Wire Resistance	Ohms
4 Wire Resistance	Ohms
AC Plus DC Volts	Volts RMS
AC Plus DC Current	Amps RMS
Frequency	Hertz
Period	Seconds
Temperature	Degrees Celsius

.NET Exceptions

The *IVI-3.2: Inherent Capabilities Specification* defines general exceptions that may be thrown, and warning events that may be raised, by this property.

4.2.5. Trigger Delay

Data Type	Access	Applies To	Coercion	High Level Functions
ViReal64 (C/COM) Ivi.Driver.PrecisionTimeSpan (.NET)	R/W	N/A	Note	Configure Trigger

Note

Many DMMs have a small, non-zero value as the minimum value for this attribute. To configure the instrument to use the shortest trigger delay, the user can specify a value of zero for this attribute. Therefore, the specific driver must coerce any value between zero and the minimum value to the minimum value. No other coercion is allowed on this attribute.

.NET Property Name

Trigger.Delay

COM Property Name

Trigger.Delay

C Constant Name

IVIDMM_ATTR_TRIGGER_DELAY

Description

Specifies the length of time between when the DMM receives the trigger and when it takes a measurement.

The Trigger Delay is an explicit delay to take place between the instrument trigger event and the initiation of the measurement. This is typically used to account for settling in the signal path. When Auto Delay is set to on, the instrument selects an appropriate settling time for this configuration.

The behavior is different for IVI-C/IVI-COM and IVI.NET as follows:

IVI-C/IVI-COM Use positive values to set the trigger delay in seconds. Negative values are reserved for the auto delay mode.

IVI.NET The PrecisionTimeSpan units are implicit in the definition of PrecisionTimeSpan. Negative values do not have a special meaning but could be used to represent pre-trigger configurations. Setting this property also sets the Trigger Delay Auto attribute to false.

Defined Values

IVI.NET does not have defined values.

Name	Description	
	Language	Identifier

Auto Delay On	Sets the DMM to use a trigger delay optimized to return appropriate results with each measurement. Setting this attribute to a manual trigger delay or Auto Delay Off disables the auto delay mode.	
	C	IVIDMM_VAL_AUTO_DELAY_ON
	COM	IviDmmTriggerDelayAutoDelayOn
Auto Delay Off	Stops the DMM from calculating the trigger delay. Sets the trigger delay to the last trigger delay the DMM calculated. Note: After the user sets this attribute to Auto Delay Off, further queries of this attribute returns the actual delay.	
	C	IVIDMM_VAL_AUTO_DELAY_OFF
	COM	IviDmmTriggerDelayAutoDelayOf f

.NET Exceptions

The *IVI-3.2: Inherent Capabilities Specification* defines general exceptions that may be thrown, and warning events that may be raised, by this property.

Compliance Notes

1. If an IVI-C IviDmm specific driver defines additional values for this attribute, the magnitude of the actual values shall be greater than or equal to Trigger Delay Specific Extension Base.
2. If an IVI-C IviDmm class driver defines additional values for this attribute, the magnitude of the actual values shall be greater than or equal to Trigger Delay Class Extension Base and less than Trigger Delay Specific Extension Base.
3. When an IVI-COM specific driver implements this attribute with additional elements in its instrument specific interfaces, it is recommended that the actual values of the additional elements be greater than or equal to Trigger Delay Specific Extension Base.

See Section 19, *Attribute Value Definitions*, for the definitions of Trigger Delay Specific Extension Base and Trigger Delay Class Extension Base.

4.2.6. Trigger Delay Auto (IVI .NET Only)

Data Type	Access	Applies To	Coercion	High Level Functions
ViBoolean	R/W	N/A	N/A	Configure Trigger

.NET Property Name

`Trigger.DelayAuto`

COM Property Name

N/A

C Constant Name

N/A

Description

If this attribute is True, the driver sets the DMM to use a trigger delay optimized to return appropriate results with each measurement.

If this attribute is False, the driver disables automatic calculation of trigger delay, and the value of the Delay attribute is used.

The actual trigger delay the DMM is currently using can be determined from the Trigger Delay attribute.

Setting the Trigger Delay attribute also sets the Trigger Delay Auto attribute to false.

Note that IVI-COM and IVI-C achieve this behavior by setting the Trigger Delay attribute to defined values.

.NET Exceptions

The IVI-3.2: Inherent Capabilities Specification defines general exceptions that may be thrown, and warning events that may be raised, by this property.

4.2.7. Trigger Source

Data Type	Access	Applies To	Coercion	High Level Functions
ViInt32 (C/COM)	R/W	N/A	None	ConfigureTrigger
ViString (.NET)	R/W	N/A	None	ConfigureTrigger

.NET Property Name

Trigger.Source

COM Property Name

Trigger.Source

COM Enumeration Name

IviDmmTriggerSourceEnum

C Constant Name

IVIDMM_ATTR_TRIGGER_SOURCE

Description

Specifies the trigger source.

Defined Values

In IVI.NET the trigger source is a string. If an IVI driver supports a trigger source and the trigger source is listed in IVI-3.3 *Cross Class Capabilities Specification*, Section 3, then the IVI driver shall accept the standard string for that trigger source. This attribute is case insensitive, but case preserving. That is, the setting is case insensitive but when reading it back the programmed case is returned. IVI specific drivers may define new trigger source strings for trigger sources that are not defined by IVI-3.3 *Cross Class Capabilities Specification* if needed.

Name	Description	
	Language	Identifier
Immediate	The DMM exits the Wait-For-Trigger state immediately after entering. It does not wait for a trigger of any kind.	
	C	IVIDMM_VAL_IMMEDIATE
External	The DMM exits the Wait-For-Trigger state when a trigger occurs on the external trigger input.	
	COM	IviDmmTriggerSourceImmediate
Software Trigger	The DMM exits the Wait-For-Trigger state when the Send Software Trigger function executes. Refer to the Standardized Cross Class Capabilities specification for a complete description of this value and the Send Software Trigger function.	
	C	IVIDMM_VAL_SOFTWARE_TRIG

<i>Name</i>	<i>Description</i>	
	<i>Language</i>	<i>Identifier</i>
	COM	IviDmmTriggerSourceSwTrigFunc
TTL0	The DMM exits the Wait-For-Trigger state when it receives a trigger on TTL0.	
	C	IVIDMM_VAL_TTL0
	COM	IviDmmTriggerSourceTTL0
TTL1	The DMM exits the Wait-For-Trigger state when it receives a trigger on TTL1.	
	C	IVIDMM_VAL_TTL1
	COM	IviDmmTriggerSourceTTL1
TTL2	The DMM exits the Wait-For-Trigger state when it receives a trigger on TTL2.	
	C	IVIDMM_VAL_TTL2
	COM	IviDmmTriggerSourceTTL2
TTL3	The DMM exits the Wait-For-Trigger state when it receives a trigger on TTL3.	
	C	IVIDMM_VAL_TTL3
	COM	IviDmmTriggerSourceTTL3
TTL4	The DMM exits the Wait-For-Trigger state when it receives a trigger on TTL4.	
	C	IVIDMM_VAL_TTL4
	COM	IviDmmTriggerSourceTTL4
TTL5	The DMM exits the Wait-For-Trigger state when it receives a trigger on TTL5.	
	C	IVIDMM_VAL_TTL5
	COM	IviDmmTriggerSourceTTL5
TTL6	The DMM exits the Wait-For-Trigger state when it receives a trigger on TTL6.	
	C	IVIDMM_VAL_TTL6
	COM	IviDmmTriggerSourceTTL6
TTL7	The DMM exits the Wait-For-Trigger state when it receives a trigger on TTL7.	
	C	IVIDMM_VAL_TTL7
	COM	IviDmmTriggerSourceTTL7
ECL0	The DMM exits the Wait-For-Trigger state when it receives a trigger on ECL0.	

<i>Name</i>	<i>Description</i>	
	<i>Language</i>	<i>Identifier</i>
	C	IVIDMM_VAL_ECL0
	COM	IviDmmTriggerSourceECL0
ECL1	The DMM exits the Wait-For-Trigger state when it receives a trigger on ECL1.	
	C	IVIDMM_VAL_ECL1
	COM	IviDmmTriggerSourceECL1
PXI Star	The DMM exits the Wait-For-Trigger state when it receives a trigger on the PXI Star trigger bus.	
	C	IVIDMM_VAL_PXI_STAR
	COM	IviDmmTriggerSourcePXIStar
RTSI 0	The DMM exits the Wait-For-Trigger state when it receives a trigger on RTSI0.	
	C	IVIDMM_VAL_RTSI_0
	COM	IviDmmTriggerSourceRTSI0
RTSI 1	The DMM exits the Wait-For-Trigger state when it receives a trigger on RTSI1.	
	C	IVIDMM_VAL_RTSI_1
	COM	IviDmmTriggerSourceRTSI1
RTSI 2	The DMM exits the Wait-For-Trigger state when it receives a trigger on RTSI2.	
	C	IVIDMM_VAL_RTSI_2
	COM	IviDmmTriggerSourceRTSI2
RTSI 3	The DMM exits the Wait-For-Trigger state when it receives a trigger on RTSI3.	
	C	IVIDMM_VAL_RTSI_3
	COM	IviDmmTriggerSourceRTSI3
RTSI 4	The DMM exits the Wait-For-Trigger state when it receives a trigger on RTSI4.	
	C	IVIDMM_VAL_RTSI_4
	COM	IviDmmTriggerSourceRTSI4
RTSI 5	The DMM exits the Wait-For-Trigger state when it receives a trigger on RTSI5.	
	C	IVIDMM_VAL_RTSI_5
	COM	IviDmmTriggerSourceRTSI5

<i>Name</i>	<i>Description</i>	
	<i>Language</i>	<i>Identifier</i>
RTSI 6	The DMM exits the Wait-For-Trigger state when it receives a trigger on RTSI6.	
	C	IVIDMM_VAL_RTSI_6
	COM	IviDmmTriggerSourceRTSI6

.NET Exceptions

The *IVI-3.2: Inherent Capabilities Specification* defines general exceptions that may be thrown, and warning events that may be raised, by this method.

Compliance Notes

1. If an IviDmm specific driver implements any of the defined values in the following table, it shall also implement the corresponding capability group:

Value	Required Capability Group
Software Trigger	IviDmmSoftwareTrigger

2. If an IVI-C IviDmm specific driver defines additional values for this attribute, the actual values shall be greater than or equal to Trigger Source Specific Extension Base.
3. If an IVI-C IviDmm class driver defines additional values for this attribute, the actual values shall be greater than or equal to Trigger Source Class Extension Base and less than Trigger Source Specific Extension Base.
4. When an IVI-COM specific driver implements this attribute with additional elements in its instrument specific interfaces, it is recommended that the actual values of the additional elements be greater than or equal to Trigger Source Specific Extension Base.

See Section 19, *Attribute Value Definitions*, for the definitions of Trigger Source Specific Extension Base and Trigger Source Class Extension Base.

4.3. IviDmmBase Functions

The IviDmmBase capability group defines the following functions:

- Abort
- Configure Measurement
- Configure Trigger
- Fetch
- Initiate
- Is Out Of Range (IVI.NET Only)
- Is Over Range
- Is Under Range (IVI.NET Only)
- Read

This section describes the behavior and requirements of each function.

4.3.1.Abort

Description

This function aborts a previously initiated measurement and returns the DMM to the idle state.

This function does not check the instrument status. Typically, the end-user calls this function only in a sequence of calls to other low-level driver functions. The sequence performs one operation. The end-user uses the low-level functions to optimize one or more aspects of interaction with the instrument. To check the instrument status, call the Error Query function at the conclusion of the sequence.

.NET Method Prototype

```
void Measurement.Abort();
```

COM Method Prototype

```
HRESULT Measurement.Abort();
```

C Prototype

```
ViStatus IviDmm_Abort (ViSession Vi);
```

Parameters

Inputs	Description	Base Type
Vi	Instrument handle	ViSession

Return Values (C/COM)

The *IVI-3.2: Inherent Capabilities Specification* defines general status codes that this function can return.

.NET Exceptions

The *IVI-3.2: Inherent Capabilities Specification* defines general exceptions that may be thrown, and warning events that may be raised, by this method.

4.3.2. Configure Measurement

Description

This function configures the common attributes of the DMM. These attributes include the measurement function, maximum range, and the resolution of the DMM.

If the value of the `range` parameter is Auto Range On, then the `resolution` parameter is ignored and the Resolution Absolute attribute is not set.

.NET Method Prototypes

```
void Configure(MeasurementFunction measurementFunction,  
              Auto autoRange,  
              Double resolution);
```

```
void Configure(MeasurementFunction measurementFunction,  
              Double range,  
              Double resolution);
```

COM Method Prototype

```
HRESULT Configure([in] IviDmmFunctionEnum Function,  
                 [in] DOUBLE Range,  
                 [in] DOUBLE Resolution);
```

C Prototype

```
ViStatus IviDmm_ConfigureMeasurement (ViSession Vi,  
                                       ViInt32 Function,  
                                       ViReal64 Range,  
                                       ViReal64 Resolution);
```

Parameters

Inputs	Description	Base Type
Vi	Instrument handle	ViSession
Function (C/COM) measurementFunction (.NET)	Specifies the measurement function. The driver uses this value to set the Function attribute. See the attribute description for more details.	ViInt32
AutoRange (.NET)	Specifies the AutoRange setting. If set to 'Off' the driver Range setting should stop at the current value selected by the algorithm. If the prototype that does not include AutoRange is used, AutoRange is set to 'Off' and the range is set to the specified value. This is controlled implicitly with IVI-C and IVI-COM with defined values for the Range parameter.	ViInt32
Range	Specifies the measurement range. The driver uses this value to set the Range attribute. See the attribute description for more details. Setting this parameter implicitly sets AutoRange to 'Off'.	ViReal64
Resolution	Specifies the resolution. The driver uses this value to set the Resolution Absolute attribute. See the attribute description for more details.	ViReal64

Return Values (C/COM)

The *IVI-3.2: Inherent Capabilities Specification* defines general status codes that this function can return.

.NET Exceptions

The *IVI-3.2: Inherent Capabilities Specification* defines general exceptions that may be thrown, and warning events that may be raised, by this method.

4.3.3. Configure Trigger

Description

This function configures the common DMM trigger attributes. These attributes include the trigger source and the trigger delay.

.NET Method Prototype

```
void Trigger.Configure(String triggerSource,
                      Boolean autoTriggerDelay)

void Trigger.Configure(String triggerSource,
                      Ivi.Driver.PrecisionTimeSpan triggerDelay);
```

COM Method Prototype

```
HRESULT Trigger.Configure([in] IviDmmTriggerSourceEnum TriggerSource,
                          [in] DOUBLE TriggerDelay);
```

C Prototype

```
ViStatus IviDmm_ConfigureTrigger (ViSession Vi,
                                   ViInt32 TriggerSource,
                                   ViReal64 TriggerDelay);
```

Parameters

Inputs	Description	Base Type
Vi	Instrument handle	ViSession
TriggerSource	Specifies the trigger source. The driver uses this value to set the Trigger Source attribute. See the attribute description for more details.	ViInt32
autoTriggerDelay (.NET)	Specifies TriggerDelay setting. If set to 'True' the triggerDelay parameter to this function is ignored. This is controlled implicitly with IVI-C and IVI-COM	ViBoolean
TriggerDelay	Specifies the trigger delay. The driver uses this value to set the Trigger Delay attribute. See the attribute description for more details.	ViReal64 (C/COM) Ivi.Driver.PrecisionTimeSpan (.NET)

Return Values (C/COM)

The *IVI-3.2: Inherent Capabilities Specification* defines general status codes that this function can return.

.NET Exceptions

The *IVI-3.2: Inherent Capabilities Specification* defines general exceptions that may be thrown, and warning events that may be raised, by this method.

4.3.4.Fetch

Description

This function returns the measured value from a measurement that the Initiate function initiates. After this function executes, the `Reading` parameter contains an actual reading or a value indicating that an overrange condition occurred.

The behavior is different for IVI-C/IVI-Com and IVI.NET as follows:

IVI-C/IVI-COM If an overrange condition occurs, the reading parameter contains an IEEE defined NaN (Not a Number) value and the function returns the Over Range completion code. The user may test the measurement value for overrange with the Is Over Range function.

IVI.NET For .NET, out of range conditions are checked by using the Is Over Range, Is Under Range, or Is Out Of Range methods.

For .NET a `maximumTime` of `PrecisionTimeSpan.Zero` indicates that the measurement should only be returned if it is already available. A `maximumTime` of `PrecisionTimeSpan.MaxValue` indicates that the measurement should wait until a measurement is available, with no timeout.

This function does not check the instrument status. Typically, the end-user calls this function only in a sequence of calls to other low-level driver functions. The sequence performs one operation. The end-user uses the low-level functions to optimize one or more aspects of interaction with the instrument. To check the instrument status, call the Error Query function at the conclusion of the sequence.

In most instrument classes, there is a programmatic way to determine when a measurement has completed and data is available. Therefore, a `MaxTimeMilliseconds` parameter is not needed in the Fetch function for these classes. This is not true for the majority of DMMs. The `MaxTimeMilliseconds` parameter specifies how long to wait in the Fetch operation since it is possible that no data is available or the trigger event did not occur.

The value of the Function attribute determines the units for the `Reading` parameter. The following table shows the defined values for the Function attribute and the corresponding units for the `Reading` parameter.

Values for FUNCTION ATTRIBUTE	Units for reading parameter
DC Volts	Volts
AC Volts	Volts RMS
DC Current	Amps
AC Current	Amps RMS
2 Wire Resistance	Ohms
4 Wire Resistance	Ohms
AC Plus DC Volts	Volts RMS
AC Plus DC Current	Amps RMS
Freq	Hertz
Period	Seconds

Temperature	Degrees Celsius
-------------	-----------------

This function is not guaranteed to return valid data if the user performs other operations on the instrument after the call to Initiate and prior to calling this function. This includes other calls to Fetch.

.NET Method Prototype

```
Double Measurement.Fetch(PrecisionTimeSpan maximumTime);
```

COM Method Prototype

```
HRESULT Measurement.Fetch([in] LONG MaxTimeMilliseconds,  
[out, retval] DOUBLE* Reading);
```

C Prototype

```
ViStatus IviDmm_Fetch (ViSession Vi,  
ViInt32 MaxTimeMilliseconds,  
ViReal64 *Reading);
```

Parameters

Inputs	Description	Base Type
Vi	Instrument handle	ViSession
MaxTimeMilliseconds (C/COM)	Specifies the maximum length of time allowed for the function to complete in milliseconds.	ViInt32
maximumTime (.NET)	Specifies the maximum length of time for the function to complete before failing.	PrecisionTimeSpan

Outputs	Description	Base Type
Reading (C/COM)	Measurement value.	ViReal64
Return value (.NET)	Measurement value.	ViReal64

Defined Values for the MaxTimeMilliseconds Parameter (C and COM)

Name	Description	
	Language	Identifier
Max Time Immediate	The function returns immediately. If no valid measurement value exists, the function returns an error.	
	C	IVIDMM_VAL_MAX_TIME_IMMEDIATE
	COM	IviDmmMaxTimeImmediate
Max Time Infinite	The function waits indefinitely for the measurement to complete.	
	C	IVIDMM_VAL_MAX_TIME_INFINITE

	COM	IviDmmMaxTimeInfinite
--	-----	-----------------------

Defined Values for the MaximumTime Parameter (.NET)

Name	Description	
	Language	Identifier
Zero	The function returns immediately. If no valid measurement value exists, the function returns an error.	
	.NET	PrecisionTimeSpan.Zero
MaxValue	The function waits indefinitely for the measurement to complete.	
	.NET	PrecisionTimeSpan.MaxValue

Return Values (C/COM)

The *IVI-3.2: Inherent Capabilities Specification* defines general status codes that this function can return. The table below specifies additional class-defined status codes for this function.

Completion Codes	Description
Over Range	Overrange warning
Max Time Exceeded	Max time exceeded before the operation completed

.NET Exceptions

The *IVI-3.2: Inherent Capabilities Specification* defines general exceptions that may be thrown, and warning events that may be raised, by this method.

Note that the .NET MaxTimeExceededException is defined in *IVI-3.2: Inherent Capabilities Specification*.

Compliance Notes

An IviDmm specific driver is not required to implement the Max Time Immediate or the Max Time Infinite defined values for the MaxTimeMilliseconds parameter to be compliant with the IviDmmBase Capability group.

4.3.5. Initiate

Description

This function initiates a measurement. When this function executes, the DMM leaves the idle state and waits for a trigger.

This function does not check the instrument status. Typically, the end-user calls this function only in a sequence of calls to other low-level driver functions. The sequence performs one operation. The end-user uses the low-level functions to optimize one or more aspects of interaction with the instrument. To check the instrument status, call the Error Query function at the conclusion of the sequence.

.NET Method Prototype

```
Void Measurement.Initiate();
```

COM Method Prototype

```
HRESULT Measurement.Initiate();
```

C Prototype

```
ViStatus IviDmm_Initiate (ViSession Vi);
```

Parameters

Inputs	Description	Base Type
Vi	Instrument handle	ViSession

Return Values (C/COM)

The *IVI-3.2: Inherent Capabilities Specification* defines general status codes that this function can return.

.NET Exceptions

The *IVI-3.2: Inherent Capabilities Specification* defines general exceptions that may be thrown, and warning events that may be raised, by this method.

4.3.6.Is Out Of Range (IVI.NET Only)

Description

This function takes a measurement value obtained from one of the Read or Fetch functions and determines if the value is a valid measurement value or a value indicating that an out of range condition occurred. Out of range returns true if and only if the measurement value is either over range or under range.

.NET Method Prototype

```
Boolean Measurement.IsOutOfRange(Double MeasurementValue);
```

COM Method Prototype

N/A

C Prototype

N/A

Parameters

Inputs	Description	Base Type
Vi	Instrument handle	ViSession
MeasurementValue	Pass the measurement value you obtain from one of the Read or Fetch functions.	ViReal64

Outputs	Description	Base Type
Return value (.NET)	Returns whether the measurementValue is a valid measurement or a value indicating that the DMM encountered an out of range condition. Valid Return Values: True - The measurementValue indicates that an out of range condition occurred. False - The measurementValue is a valid measurement.	ViBoolean

Return Values (C/COM))

The *IVI-3.2: Inherent Capabilities Specification* defines general status codes that this function can return.

.NET Exceptions

The *IVI-3.2: Inherent Capabilities Specification* defines general exceptions that may be thrown, and warning events that may be raised, by this method.

4.3.7.Is Over Range

Description

This function takes a measurement value obtained from one of the Read or Fetch functions and determines if the value is a valid measurement value or a value indicating that an overrange condition occurred.

.NET Method Prototype

```
Boolean Measurement.IsOverRange(Double MeasurementValue);
```

COM Method Prototype

```
HRESULT Measurement.IsOverRange([in] DOUBLE MeasurementValue,  
                                [out, retval] VARIANT_BOOL* IsOver);
```

C Prototype

```
ViStatus IviDmm_IsOverRange (ViSession Vi,  
                             ViReal64 MeasurementValue,  
                             ViBoolean *IsOverRange);
```

Parameters

Inputs	Description	Base Type
Vi	Instrument handle	ViSession
MeasurementValue	Pass the measurement value you obtain from one of the Read or Fetch functions.	ViReal64

Outputs	Description	Base Type
IsOverRange (C/ COM) Return value (.NET)	Returns whether the measurementValue is a valid measurement or a value indicating that the DMM encountered an over range condition. Valid Return Values: True - The measurementValue indicates that an overrange condition occurred. False - The measurementValue is a valid measurement.	ViBoolean

Return Values (C/COM))

The *IVI-3.2: Inherent Capabilities Specification* defines general status codes that this function can return.

.NET Exceptions

The *IVI-3.2: Inherent Capabilities Specification* defines general exceptions that may be thrown, and warning events that may be raised, by this method.

4.3.8.Is Under Range (IVI.NET Only)

Description

This function takes a measurement value obtained from one of the Read or Fetch functions and determines if the value is a valid measurement value or a value indicating that an under range condition occurred.

.NET Method Prototype

```
Boolean Measurement.IsUnderRange(Double MeasurementValue);
```

COM Method Prototype

N/A

C Prototype

N/A

Parameters

Inputs	Description	Base Type
Vi	Instrument handle	ViSession
MeasurementValue	Pass the measurement value you obtain from one of the Read or Fetch functions.	ViReal64

Outputs	Description	Base Type
Return value (.NET)	Returns whether the measurementValue is a valid measurement or a value indicating that the DMM encountered an under range condition. Valid Return Values: True - The measurementValue indicates that an overrange condition occurred. False - The measurementValue is a valid measurement.	ViBoolean

Return Values (C/COM))

The *IVI-3.2: Inherent Capabilities Specification* defines general status codes that this function can return.

.NET Exceptions

The *IVI-3.2: Inherent Capabilities Specification* defines general exceptions that may be thrown, and warning events that may be raised, by this method.

4.3.9.Read

Description

This function initiates a measurement, waits until the DMM has returned to the idle state, and returns the measured value.

The behavior is different for IVI-C/IVI-COM and IVI.NET as follows:

IVI-C/IVI-COM, after this function executes, the `Reading` parameter contains an actual reading or a value indicating that an overrange condition occurred. If an overrange condition occurs, the `Reading` parameter contains an IEEE 754 defined NaN (Not a Number) value and the function returns Over Range. The end-user may test the measurement value for overrange with the `Is Over Range` function.

IVI.NET For .NET, out of range conditions are checked by using the `Is Over Range`, `Is Under Range`, or `Is Out Of Range` methods.

The value of the Function attribute determines the units for the `Reading` parameter. Refer to Section 4.3.3, *Fetch*, for more details.

.NET Method Prototype

```
Double Measurement.Read(PrecisionTimeSpan maximumTime);
```

COM Method Prototype

```
HRESULT Measurement.Read([in] LONG MaxTimeMilliseconds,
                          [out, retval] DOUBLE* Reading);
```

C Prototype

```
ViStatus IviDmm_Read (ViSession Vi,
                      ViInt32 MaxTimeMilliseconds,
                      ViReal64 *Reading);
```

Parameters

Inputs	Description	Base Type
Vi	Instrument handle	ViSession
MaxTimeMilliseconds (C/COM)	Specifies the maximum length of time allowed for the function to complete in milliseconds.	ViInt32
maximumTime (.NET)	Specifies the maximum length of time allowed for the function to complete.	PrecisionTimeSpan

Outputs	Description	Base Type
Reading (C/COM)	Measurement value.	ViReal64
Return value (.NET)	Measurement value.	ViReal64

Defined Values for the MaxTimeMilliseconds Parameter

<i>Name</i>	<i>Description</i>	
	<i>Language</i>	<i>Identifier</i>
Max Time Immediate	The function returns immediately. If no valid measurement value exists, the function returns an error.	
	C	IVIDMM_VAL_MAX_TIME_IMMEDIATE
	COM	IviDmmMaxTimeImmediate
Max Time Infinite	The function waits indefinitely for the measurement to complete.	
	C	IVIDMM_VAL_MAX_TIME_INFINITE
	COM	IviDmmMaxTimeInfinite

Defined Values for the MaximumTime Parameter (.NET)

<i>Name</i>	<i>Description</i>	
	<i>Language</i>	<i>Identifier</i>
Zero	The function returns immediately. If no valid measurement value exists, the function returns an error.	
	.NET	PrecisionTimeSpan.Zero
MaxValue	The function waits indefinitely for the measurement to complete.	
	.NET	PrecisionTimeSpan.MaxValue

Return Values (C/COM)

The *IVI-3.2: Inherent Capabilities Specification* defines general status codes that this function can return. The table below specifies additional class-defined status codes for this function.

Completion Codes	Description
Over Range	Overrange warning
Max Time Exceeded	Max time exceeded before the operation completed

.NET Exceptions

The *IVI-3.2: Inherent Capabilities Specification* defines general exceptions that may be thrown, and warning events that may be raised, by this method.

Note that the .NET MaxTimeExceededException is defined in *IVI-3.2: Inherent Capabilities Specification*.

Compliance Notes

An IviDmm specific driver is not required to implement the Max Time Immediate or the Max Time Infinite defined values for the `MaxTimeMilliseconds` parameter to be compliant with the IviDmmBase extension group.

4.4. IviDmmBase Behavior Model

The following behavior model shows the relationship between the IviDmmBase capability group and DMM behavior.

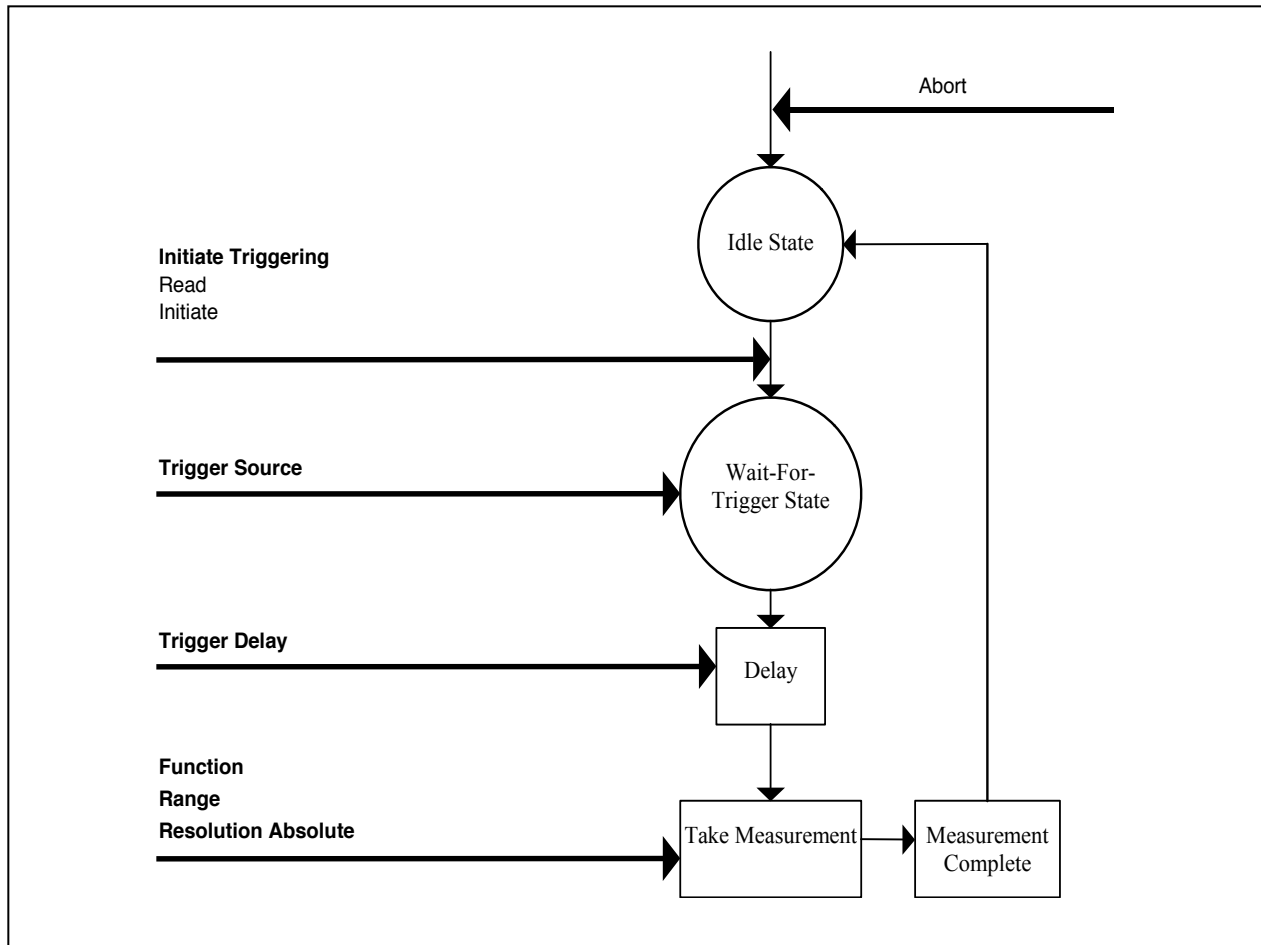


Figure 4-1. IviDmm Behavior Model

The main state in the IviDmm Class is the Idle state. The DMM enters the Idle state as the result of being “powered-on”, successfully completing a measurement, or by being aborted from a previous measurement by the user with the Abort function. Typically, the user configures the DMM while it is in the Idle state. IviDmm attributes can be configured individually with the Set Attribute function or with the high-level Configure function.

The Read and Initiate functions cause the DMM to leave the Idle state and transition to the Wait-For-Trigger state. The Read function does not return until the measurement process is complete and the DMM returns to the Idle state. The Initiate function returns as soon as the DMM leaves the Idle state.

The DMM leaves the Wait-For-Trigger state when it receives a trigger event. The type of trigger event is specified by the attribute Trigger Source.

After the specified trigger event occurs, the DMM waits the amount of time specified by the attribute Trigger Delay and then takes a measurement. The type of measurement is specified by the attributes Function, Range, and Resolution Absolute.

If the Function attribute is set to a value that requires an extension capability group, the attributes of that capability group further configure the measurement.

After the measurement is taken, the DMM (if it is capable of doing so) generates the Measurement Complete signal and returns to the Idle state.

The IviDmmBase capability group does not require that a DMM be able to generate a Measurement Complete signal. The IviDmmMultiPoint capability group defines how the Measurement Complete signal is configured. The Measurement Complete signal is presented in the IviDmm behavior model diagram to define when the signal is generated as most DMMs generate this signal but may not be able to configure it.

The Fetch function is used to retrieve measurements that were initiated by the Initiate function. The measurement data returned from the Read and Fetch functions is acquired after the DMM has left the Wait-For-Trigger state.

5. IviDmmACMeasurement Extension Group

5.1. IviDmmACMeasurement Overview

The IviDmmACMeasurement extension group supports DMMs that take AC voltage or AC current measurements. It defines attributes that configure additional settings for AC measurements. These attributes are the minimum and maximum frequency components of the input signal. This extension group also defines functions that configure these attributes.

5.2. IviDmmACMeasurement Attributes

The IviDmmACMeasurement extension group defines the following attributes:

- AC Max Freq
- AC Min Freq

This section describes the behavior and requirements of each attribute. The actual value for each attribute ID is defined in Section 18, *IviDmm Attribute ID Definitions*.

5.2.1.AC Max Freq

Data Type	Access	Applies To	Coercion	High Level Functions
ViReal64	R/W	N/A	Up	Configure AC Bandwidth

.NET Property Name

AC.FrequencyMax

COM Property Name

AC.FrequencyMax

C Constant Name

IVIDMM_ATTR_AC_MAX_FREQ

Description

Specifies the maximum frequency component of the input signal for AC measurements. The value of this attribute affects instrument behavior only when the Function attribute is set to an AC voltage or AC current measurement.

.NET Exceptions

The *IVI-3.2: Inherent Capabilities Specification* defines general exceptions that may be thrown, and warning events that may be raised, by this property.

5.2.2.AC Min Freq

Data Type	Access	Applies To	Coercion	High Level Functions
ViReal64	R/W	N/A	Down	Configure AC Bandwidth

.NET Property Name

AC.FrequencyMin

COM Property Name

AC.FrequencyMin

C Constant Name

IVIDMM_ATTR_AC_MIN_FREQ

Description

Specifies the minimum frequency component of the input signal for AC measurements. The value of this attribute affects instrument behavior only when the Function attribute is set to an AC voltage or AC current measurement.

.NET Exceptions

The *IVI-3.2: Inherent Capabilities Specification* defines general exceptions that may be thrown, and warning events that may be raised, by this property.

5.3. IviDmmACMeasurement Functions

The IviDmmACMeasurement extension group defines the following function:

- Configure AC Bandwidth

This section describes the behavior and requirements of this function.

5.3.1. Configure AC Bandwidth

Description

This function configures additional parameters for DMMs that take AC voltage or AC current measurements. These attributes are the AC minimum and maximum frequency.

.NET Method Prototype

```
void AC.ConfigureBandwidth (Double MinFreq,  
                           Double MaxFreq);
```

COM Method Prototype

```
HRESULT AC.ConfigureBandwidth ([in] DOUBLE MinFreq,  
                               [in] DOUBLE MaxFreq);
```

C Prototype

```
ViStatus IviDmm_ConfigureACBandwidth (ViSession Vi,  
                                       ViReal64 MinFreq,  
                                       ViReal64 MaxFreq);
```

Parameters

Inputs	Description	Base Type
Vi	Instrument handle	ViSession
MinFreq	Specifies the AC minimum frequency. The driver uses this value to set the AC Min Freq attribute. See the attribute description for more details.	ViReal64
MaxFreq	Specifies the AC maximum frequency. The driver uses this value to set the AC Max Freq attribute. See the attribute description for more details.	ViReal64

Return Values (C/COM)

The *IVI-3.2: Inherent Capabilities Specification* defines general status codes that this function can return.

.NET Exceptions

The *IVI-3.2: Inherent Capabilities Specification* defines general exceptions that may be thrown, and warning events that may be raised, by this method.

5.4. IviDmmACMeasurement Behavior Model

The IviDmmACMeasurement extension group follows the same behavior model as the IviDmmBase capability group described in Section 4.4, *IviDmmBase Behavior Model*.

5.5. IviDmmACMeasurement Compliance Notes

1. IviDmm specific drivers that implement this extension group shall implement at least one of the following values for the `Function` attribute in the IviDmmBase capability group:
 - AC Volts
 - AC Current
 - AC Plus DC Volts
 - AC Plus DC Volts

6.IviDmmFrequencyMeasurement Extension Group

6.1.IviDmmFrequencyMeasurement Overview

The IviDmmFrequencyMeasurement extension group supports DMMs that take frequency measurements. It defines attributes that are required to configure additional parameters needed for frequency measurements.

6.2.IviDmmFrequencyMeasurement Attributes

The IviDmmFrequencyMeasurement extension group defines the following attribute:

- Frequency Voltage Range

This section describes the behavior and requirements of this attribute. The actual value for this attribute ID is defined in Section 18, *IviDmm Attribute ID Definitions*.

6.2.1. Frequency Voltage Range

Data Type	Access	Applies To	Coercion	High Level Functions
ViReal64	R/W	N/A	Up	Configure Frequency Voltage Range

.NET Property Name

Frequency.VoltageRange

COM Property Name

Frequency.VoltageRange

C Constant Name

IVIDMM_ATTR_FREQ_VOLTAGE_RANGE

Description

Specifies the expected maximum amplitude of the input signal for frequency and period measurements.

The behavior is different for IVI-C/IVI-COM and IVI.NET as follows:

IVI-C/IVI-COM Positive values represent the manual range. Negative values represent the Auto Range mode.

IVI.NET Specifies the frequency voltage range. Querying this value will return the frequency voltage range corresponding to the maximum input value based on the rest of the instrument configuration. Setting this property sets the Frequency Voltage Auto Range attribute to Off.

The value of this attribute affects instrument behavior only when the Function attribute is set to a frequency or period measurement.

The units are specified in Volts RMS.

Defined Values

There are no defined values for IVI.NET

<i>Name</i>	<i>Description</i>	
	<i>Language</i>	<i>Identifier</i>
Auto Range On	Sets the DMM to calculate the frequency voltage range before each measurement automatically. Setting this attribute to a manual range or to Auto Range Off disables auto-ranging.	
	C	IVIDMM_VAL_AUTO_RANGE_ON
	COM	IvidmmFrequencyVoltageRangeAutoRangeOn
Auto Range Off	Disables auto-ranging. Further queries of this attribute return the actual frequency voltage range.	
	C	IVIDMM_VAL_AUTO_RANGE_OFF

	COM	IviDmmFrequencyVoltageRangeAutoRangeOf f
--	-----	---

.NET Exceptions

The *IVI-3.2: Inherent Capabilities Specification* defines general exceptions that may be thrown, and warning events that may be raised, by this property.

Compliance Notes

1. If an IVI-C specific driver defines additional values for this attribute, the magnitude of the actual values must be greater than or equal to Frequency Volt Range Specific Extension Base.
2. If an IVI-C class driver defines additional values for this attribute, the magnitude of the actual values must be greater than or equal to Frequency Volt Range Class Extension Base and less than Frequency Volt Range Specific Extension Base.
3. When an IVI-COM specific driver implements this attribute with additional elements in its instrument specific interfaces, it is recommended that the actual values of the additional elements be greater than or equal to Frequency Volt Range Specific Extension Base.

See Section 19, *Attribute Value Definitions*, for the definitions of Frequency Volt Range Specific Extension Base and Frequency Volt Range Class Extension Base.

6.2.2. Frequency Voltage Range Auto (IVI.NET Only)

Data Type	Access	Applies To	Coercion	High Level Functions
ViBoolean	R/W	N/A	N/A	N/A

.NET Property Name

`Frequency.VoltageRangeAuto`

COM Property Name

N/A

C Constant Name

N/A

Description

If this attribute is set to True, the driver sets the DMM to calculate the frequency voltage range before each measurement automatically.

If this attribute is set to False, the driver sets the frequency voltage range to the value it most recently set or calculated.

The actual voltage range the DMM is currently using can be determined from the Frequency Voltage Range attribute in the `IviDmmFrequencyMeasurement` extension group.

Setting the Frequency Voltage Range attribute also sets the Frequency Voltage Range Auto attribute to false.

Note that IVI-COM and IVI-C achieve this behavior by setting the Frequency Voltage Range attribute to defined values.

.NET Exceptions

The *IVI-3.2: Inherent Capabilities Specification* defines general exceptions that may be thrown, and warning events that may be raised, by this property.

Note that the .NET Auto Once Not Supported exception is defined in *IVI-3.2: Inherent Capabilities Specification*.

6.3. IviDmmFrequencyMeasurement Functions

The IviDmmFrequencyMeasurement extension group defines the following function:

- Configure Frequency Voltage Range (IVI-C only)

This section describes the behavior and requirements of this function.

6.3.1. Configure Frequency Voltage Range (IVI-C Only)

Description

This function configures the frequency voltage range of the DMM.

.NET Method Prototype

N/A

(use the `Frequency.VoltageRange` and `Frequency.VoltageAutoRange` properties)

COM Method Prototype

N/A

(use the `Frequency.VoltageRange` property)

C Prototype

```
ViStatus IviDmm_ConfigureFrequencyVoltageRange (ViSession Vi,  
ViReal64 FrequencyVoltageRange);
```

Parameters

Inputs	Description	Base Type
Vi	Instrument handle	ViSession
FrequencyVoltageRange	Specifies the expected maximum value of the input signal. The driver uses this value to set the Frequency Voltage Range attribute. See the attribute description for more details.	ViReal64

Return Values (C)

The IVI-3.2: Inherent Capabilities Specification defines general status codes that this function can return.

6.4. IviDmmFrequencyMeasurement Behavior Model

The IviDmmFrequencyMeasurement extension group follows the same behavior model as the IviDmmBase capability group described in Section 4.4, *IviDmmBase Behavior Model*.

6.5. IviDmmFrequencyMeasurement Compliance Notes

1. IviDmm specific drivers that implement this extension group shall implement at least one of the following values for the Function attribute in the IviDmmBase capability group:
 - Frequency
 - Period

7.IviDmmTemperatureMeasurement Extension Group

7.1.IviDmmTemperatureMeasurement Overview

The IviDmmTemperatureMeasurement extension group supports DMMs that take temperature measurements with a thermocouple, an RTD, or a thermistor transducer type. This extension group selects the transducer type. Other capability groups further configure temperature settings based on the transducer type.

7.2.IviDmmTemperatureMeasurement Attributes

The IviDmmTemperatureMeasurement extension group defines the following attribute:

- Temperature Transducer Type

This section describes the behavior and requirements of this attribute. The actual value for the attribute ID is defined in Section 18, *IviDmm Attribute ID Definitions*.

7.2.1. Temperature Transducer Type

Data Type	Access	Applies To	Coercion	High Level Functions
ViInt32	R/W	N/A	None	Configure Transducer Type

.NET Property Name

`Temperature.TransducerType`

.NET Enumeration Name

`Temperature.TransducerType`

COM Property Name

`Temperature.TransducerType`

COM Enumeration Name

`IviDmmTransducerTypeEnum`

C Constant Name

`IVIDMM_ATTR_TEMP_TRANSDUCER_TYPE`

Description

Specifies the device used to measure the temperature. The value of this attribute affects instrument behavior only when the Function attribute is set to a temperature measurement.

Defined Values

<i>Name</i>	<i>Description</i>	
	<i>Language</i>	<i>Identifier</i>
Thermocouple	Sets the DMM to measure temperature using a thermocouple. Use the IviDmmThermocouple extension group to configure additional settings for this transducer type.	
	.NET	TransducerType.Thermocouple
	C	IVIDMM_VAL_THERMOCOUPLE
	COM	IviDmmTransducerTypeThermocouple
Thermistor	Sets the DMM to measure temperature using a thermistor. Use the IviDmmThermistor extension group to configure additional settings for this transducer type.	
	.NET	TransducerType.Thermistor
	C	IVIDMM_VAL_THERMISTOR
	COM	IviDmmTransducerTypeThermistor
2 Wire RTD	Sets the DMM to measure temperature using a 2-wire temperature resistance device. Use the IviDmmResistanceTemperatureDevice extension group to configure additional settings for this transducer type.	
	.NET	TransducerType.TwoWireRtd
	C	IVIDMM_VAL_2_WIRE_RTD
	COM	IviDmmTransducerType2WireRtd
4 Wire RTD	Sets the DMM to measure temperature using a 4-wire temperature resistance device. Use the IviDmmResistanceTemperatureDevice extension group to configure additional settings for this transducer type.	
	.NET	TransducerType.FourWireRtd
	C	IVIDMM_VAL_4_WIRE_RTD
	COM	IviDmmTransducerType4WireRtd

.NET Exceptions

The *IVI-3.2: Inherent Capabilities Specification* defines general exceptions that may be thrown, and warning events that may be raised, by this property.

Compliance Notes

If an IviDmm specific driver implements any of the defined values in the following table, it shall also implement the corresponding capability group:

Value	Required Capability Group
Thermocouple	IviDmmThermocouple

Thermistor	IviDmmThermistor
2 Wire RTD	IviDmmResistanceTemperatureDevice
4 Wire RTD	IviDmmResistanceTemperatureDevice

1. If an IVI-C specific driver defines additional values for this attribute, the actual values shall be greater than or equal to Transducer Specific Extension Base.
2. If an IVI-C class driver defines additional values for this attribute, the actual values shall be greater than or equal to Transducer Class Extension Base and less than Transducer Specific Extension Base.
3. When an IVI-COM specific driver implements this attribute with additional elements in its instrument specific interfaces, it is recommended that the actual values of the additional elements be greater than or equal to Transducer Specific Extension Base.

See Section 19, *Attribute Value Definitions*, for the definitions of Transducer Specific Extension Base and Transducer Class Extension Base.

7.3. IviDmmTemperatureMeasurement Functions

The IviDmmTemperatureMeasurement extension group defines the following function:

- Configure Transducer Type (IVI-C only)

This section describes the behavior and requirements of this function.

7.3.1. Configure Transducer Type (IVI-C Only)

Description

This function configures the DMM to take temperature measurements from a specified transducer type.

.NET Method Prototype

N/A
(use the `Temperature.TransducerType` property)

COM Method Prototype

N/A
(use the `Temperature.TransducerType` property)

C Prototype

```
ViStatus IviDmm_ConfigureTransducerType (ViSession Vi,  
                                          ViInt32 TransducerType);
```

Parameters

Inputs	Description	Base Type
Vi	Instrument handle	ViSession
TransducerType	Specifies the device used to measure the temperature. The driver uses this value to set the Temperature Transducer Type attribute. See the attribute description for more details.	ViInt32

Return Values (C)

The *IVI-3.2: Inherent Capabilities Specification* defines general status codes that this function can return.

7.4. IviDmmTemperatureMeasurement Behavior Model

The IviDmmTemperatureMeasurement extension group follows the same behavior model as the IviDmmBase capability group described in Section 4.4, *IviDmmBase Behavior Model*.

7.5. IviDmmTemperatureMeasurement Compliance Notes

1. IviDmm specific drivers that implement this extension group shall implement the Temperature value for the Function attribute in the IviDmmBase capability group.

8. IviDmmThermocouple Extension Group

8.1. IviDmmThermocouple Extension Group Overview

The IviDmmThermocouple extension group supports DMMs that take temperature measurements using a thermocouple transducer type.

8.2. IviDmmThermocouple Attributes

The IviDmmThermocouple extension group defines the following attributes:

- Thermocouple Fixed Reference Junction
- Thermocouple Reference Junction Type
- Thermocouple Type

This section describes the behavior and requirements of each attribute. The actual value for each attribute ID is defined in Section 18, *IviDmm Attribute ID Definitions*.

8.2.1. Thermocouple Fixed Reference Junction

Data Type	Access	Applies To	Coercion	High Level Functions
ViReal64	R/W	N/A	None	Configure Fixed Reference Junction

.NET Property Name

`Temperature.Thermocouple.FixedReferenceJunction`

COM Property Name

`Temperature.Thermocouple.FixedRefJunction`

C Constant Name

`IVIDMM_ATTR_TEMP_TC_FIXED_REF_JUNC`

Description

Specifies the external reference junction temperature when a fixed reference junction type thermocouple is used to take the temperature measurement. The temperature is specified in degrees Celsius.

This attribute may also be used to specify the thermocouple junction temperature of an instrument that does not have an internal temperature sensor.

The value of this attribute affects instrument behavior only when the Thermocouple Reference Junction Type is set to Temperature Reference Junction Fixed.

.NET Exceptions

The *IVI-3.2: Inherent Capabilities Specification* defines general exceptions that may be thrown, and warning events that may be raised, by this property.

Compliance Notes

IviDmm specific drivers that implement this attribute shall implement the Temperature Reference Junction Fixed defined value for the Thermocouple Reference Junction Type attribute.

8.2.2. Thermocouple Reference Junction Type

Data Type	Access	Applies To	Coercion	High Level Functions
ViInt32	R/W	N/A	None	Configure Thermocouple

.NET Property Name

Temperature.Thermocouple.ReferenceJunctionType

.NET Enumeration Name

ReferenceJunctionType

COM Property Name

Temperature.Thermocouple.RefJunctionType

COM Enumeration Name

IviDmmRefJunctionTypeEnum

C Constant Name

IVIDMM_ATTR_TEMP_TC_REF_JUNC_TYPE

Description

Specifies the type of reference junction to be used in the reference junction compensation of a thermocouple measurement. The value of this attribute affects instrument behavior only when the Temperature Transducer Type is set to Thermocouple.

Defined Values

<i>Name</i>	<i>Description</i>	
	<i>Language</i>	<i>Identifier</i>
Thermocouple Reference Junction Internal	Sets the DMM to use an internal sensor at the thermocouple junction for the junction compensation.	
	.NET	ReferenceJunctionType.Internal
	C	IVIDMM_VAL_TEMP_REF_JUNC_INTERNAL
COM	IviDmmRefJunctionTypeInternal	
Thermocouple Reference Junction Fixed	Sets the DMM to use a fixed value for the thermocouple junction compensation. Use the Thermocouple Fixed Reference Junction attribute to set the fixed reference junction value.	
	.NET	ReferenceJunctionType.Fixed
	C	IVIDMM_VAL_TEMP_REF_JUNC_FIXED
COM	IviDmmRefJunctionTypeFixed	

.NET Exceptions

The *IVI-3.2: Inherent Capabilities Specification* defines general exceptions that may be thrown, and warning events that may be raised, by this property.

Compliance Notes

If an IviDmm specific driver implements the Temperature Reference Junction Fixed defined value, then it shall implement the Thermocouple Fixed Reference Junction attribute.

1. If an IVI-C IviDmm specific driver defines additional values for this attribute, the actual values shall be greater than or equal to Reference Junction Specific Extension Base.
2. If an IVI-C IviDmm class driver defines additional values for this attribute, the actual values shall be greater than or equal to Reference Junction Class Extension Base and less than Reference Junction Specific Extension Base.
3. When an IVI-COM specific driver implements this attribute with additional elements in its instrument specific interfaces, it is recommended that the actual values of the additional elements be greater than or equal to Reference Junction Specific Extension Base.

See Section 19, *Attribute Value Definitions*, for the definitions of Reference Junction Specific Extension Base and Reference Junction Class Extension Base.

8.2.3. Thermocouple Type

Data Type	Access	Applies To	Coercion	High Level Functions
ViInt32	R/W	N/A	None	Configure Thermocouple

.NET Property Name

`Temperature.Thermocouple.Type`

.NET Enumeration Name

`Temperature.ThermocoupleType`

COM Property Name

`Temperature.Thermocouple.Type`

COM Enumeration Name

`IviDmmThermocoupleTypeEnum`

C Constant Name

`IVIDMM_ATTR_TEMP_TC_TYPE`

Description

Specifies the type of thermocouple used to measure the temperature. The value of this attribute affects instrument behavior only when the Temperature Transducer Type is set to Thermocouple.

Defined Values

<i>Name</i>	<i>Description</i>	
	<i>Language</i>	<i>Identifier</i>
Thermocouple B	Sets the DMM to measure temperature from a B-type thermocouple.	
	.NET	ThermocoupleType.B
	C	IVIDMM_VAL_TEMP_TC_B
	COM	IviDmmThermocoupleTypeB
Thermocouple C	Sets the DM7M to measure temperature from a C-type thermocouple.	
	.NET	ThermocoupleType.C
	C	IVIDMM_VAL_TEMP_TC_C
	COM	IviDmmThermocoupleTypeC
Thermocouple D	Sets the DMM to measure temperature from a D-type thermocouple.	
	.NET	ThermocoupleType.D
	C	IVIDMM_VAL_TEMP_TC_D
	COM	IviDmmThermocoupleTypeD
Thermocouple E	Sets the DMM to measure temperature from an E-type thermocouple.	
	.NET	ThermocoupleType.E
	C	IVIDMM_VAL_TEMP_TC_E
	COM	IviDmmThermocoupleTypeE
Thermocouple G	Sets the DMM to measure temperature from a G-type thermocouple.	
	.NET	ThermocoupleType.G
	C	IVIDMM_VAL_TEMP_TC_G
	COM	IviDmmThermocoupleTypeG
Thermocouple J	Sets the DMM to measure temperature from a J-type thermocouple.	
	.NET	ThermocoupleType.J
	C	IVIDMM_VAL_TEMP_TC_J
	COM	IviDmmThermocoupleTypeJ
Thermocouple K	Sets the DMM to measure temperature from a K-type thermocouple.	
	.NET	ThermocoupleType.K
	C	IVIDMM_VAL_TEMP_TC_K

<i>Name</i>	<i>Description</i>	
	<i>Language</i>	<i>Identifier</i>
	COM	IviDmmThermocoupleTypeK
Thermocouple N	Sets the DMM to measure temperature from an N-type thermocouple.	
	.NET	ThermocoupleType.N
	C	IVIDMM_VAL_TEMP_TC_N
	COM	IviDmmThermocoupleTypeN
Thermocouple R	Sets the DMM to measure temperature from an R-type thermocouple.	
	.NET	ThermocoupleType.R
	C	IVIDMM_VAL_TEMP_TC_R
	COM	IviDmmThermocoupleTypeR
Thermocouple S	Sets the DMM to measure temperature from an S-type thermocouple.	
	.NET	ThermocoupleType.S
	C	IVIDMM_VAL_TEMP_TC_S
	COM	IviDmmThermocoupleTypeS
Thermocouple T	Sets the DMM to measure temperature from a T-type thermocouple.	
	.NET	ThermocoupleType.T
	C	IVIDMM_VAL_TEMP_TC_T
	COM	IviDmmThermocoupleTypeT
Thermocouple U	Sets the DMM to measure temperature from a U-type thermocouple.	
	.NET	ThermocoupleType.U
	C	IVIDMM_VAL_TEMP_TC_U
	COM	IviDmmThermocoupleTypeU
Thermocouple V	Sets the DMM to measure temperature from a V-type thermocouple.	
	.NET	ThermocoupleType.V
	C	IVIDMM_VAL_TEMP_TC_V
	COM	IviDmmThermocoupleTypeV

.NET Exceptions

The *IVI-3.2: Inherent Capabilities Specification* defines general exceptions that may be thrown, and warning events that may be raised, by this property.

Compliance Notes

1. If an IVI-C IviDmm specific driver defines additional values for this attribute, the actual values must be greater than or equal to Thermocouple Type Specific Extension Base.
2. If an IVI-C IviDmm class driver defines additional values for this attribute, the actual values must be greater than or equal to Thermocouple Type Class Extension Base and less than Thermocouple Type Specific Extension Base.
3. When an IVI-COM specific driver implements this attribute with additional elements in its instrument specific interfaces, it is recommended that the actual values of the additional elements be greater than or equal to Thermocouple Type Specific Extension Base.

See Section 19, *Attribute Value Definitions*, for the definitions of Thermocouple Type Specific Extension Base and Thermocouple Type Class Extension Base.

8.3. IviDmmThermocouple Functions

The IviDmmTemperatureMeasurement extension group defines the following functions:

- Configure Fixed Reference Junction (IVI-C only)
- Configure Thermocouple

This section describes the behavior and requirements of each function.

8.3.1. Configure Fixed Reference Junction (IVI-C Only)

Description

This function configures the fixed reference junction for a thermocouple with a fixed reference junction type.

.NET Method Prototype

N/A

(use the `Temperature.Thermocouple.FixedReferenceJunction` property)

COM Method Prototype

N/A

(use the `Temperature.Thermocouple.FixedRefJunction` property)

C Prototype

```
ViStatus IviDmm_ConfigureFixedRefJunction (ViSession Vi,  
                                           ViReal64 FixedRefJunction);
```

Parameters

Inputs	Description	Base Type
Vi	Instrument handle	ViSession
FixedRefJunction	Specifies the fixed reference junction. The driver uses this value to set the Thermocouple Fixed Reference Junction attribute. See the attribute description for more details.	ViReal64

Return Values (C)

The *IVI-3.2: Inherent Capabilities Specification* defines general status codes that this function can return.

Compliance Notes

The IviDmm specific driver is required to implement this function only if the Thermocouple Reference Junction Type attribute implements the Temperature Reference Junction Fixed defined value.

8.3.2. Configure Thermocouple

Description

This function configures the thermocouple type and the reference junction type of the thermocouple for DMMs that take temperature measurements using a thermocouple transducer type.

.NET Method Prototype

```
void Temperature.Thermocouple.Configure(  
    ThermocoupleType type,  
    ReferenceJunctionType referenceJunctionType);
```

COM Method Prototype

```
HRESULT Temperature.Thermocouple.Configure(  
    [in] IviDmmThermocoupleTypeEnum Type,  
    [in] IviDmmRefJunctionTypeEnum RefJunctionType);
```

C Prototype

```
ViStatus IviDmm_ConfigureThermocouple (ViSession Vi,  
    ViInt32 ThermocoupleType  
    ViInt32 RefJunctionType);
```

Parameters

Inputs	Description	Base Type
Vi	Instrument handle	ViSession
ThermocoupleType	Specifies the type of thermocouple used to measure the temperature. The driver uses this value to set the Thermocouple Type attribute. See the attribute description for more details.	ViInt32
RefJunctionType (C/ COM) referenceJunctionType (.NET)	Specifies the type of reference junction to be used. The driver uses this value to set the Thermocouple Reference Junction Type attribute. See the attribute description for more details.	ViInt32

Return Values (C/COM)

The *IVI-3.2: Inherent Capabilities Specification* defines general status codes that this function can return.

.NET Exceptions

The *IVI-3.2: Inherent Capabilities Specification* defines general exceptions that may be thrown, and warning events that may be raised, by this method.

8.4. IviDmmThermocouple Behavior Model

The IviDmmThermocouple extension group follows the same behavior model as the IviDmmBase capability group described in Section 4.4, *IviDmmBase Behavior Model*.

8.5. IviDmmThermocouple Compliance Notes

1. IviDmm specific drivers that implement this extension group shall implement the IviDmmTemperatureMeasurement extension group.
2. IviDmm specific drivers that implement this extension group shall implement the Thermocouple value for the Temperature Transducer Type attribute in the IviDmmTemperatureMeasurement extension group.

9.IviDmmResistanceTemperatureDevice Extension Group

9.1.IviDmmResistanceTemperatureDevice Extension Group Overview

The IviDmmResistanceTemperatureDevice extension group supports DMMs that take temperature measurements using a resistance temperature device (RTD) transducer type.

The IviDmm class assumes that you are using a Platinum Resistance Temperature Device.

9.2.IviDmmResistanceTemperatureDevice Attributes

The IviDmmResistanceTemperatureDevice extension group defines the following attributes:

- RTD Alpha
- RTD Resistance

This section describes the behavior and requirements of each attribute. The actual value for each attribute ID is defined in Section 18, *IviDmm Attribute ID Definitions*.

9.2.1.RTD Alpha

Data Type	Access	Applies To	Coercion	High Level Functions
ViReal64	R/W	N/A	None	Configure RTD

.NET Property Name

Temperature.Rtd.Alpha

COM Property Name

Temperature.RTD.Alpha

C Constant Name

IVIDMM_ATTR_TEMP_RTD_ALPHA

Description

Specifies the alpha parameter for a resistance temperature device (RTD).

The value of this attribute affects instrument behavior only when the Temperature Transducer Type is set to the 2 Wire RTD or the 4 Wire RTD defined values.

.NET Exceptions

The *IVI-3.2: Inherent Capabilities Specification* defines general exceptions that may be thrown, and warning events that may be raised, by this property.

9.2.2.RTD Resistance

Data Type	Access	Applies To	Coercion	High Level Functions
ViReal64	R/W	N/A	None	Configure RTD

.NET Property Name

Temperature.Rtd.Resistance

COM Property Name

Temperature.RTD.Resistance

C Constant Name

IVIDMM_ATTR_TEMP_RTD_RES

Description

Specifies the R_0 parameter (resistance) for a resistance temperature device (RTD). The RTD resistance is also known as the RTD reference value.

The value of this attribute affects instrument behavior only when the Temperature Transducer Type is set to the RTD defined value.

.NET Exceptions

The *IVI-3.2: Inherent Capabilities Specification* defines general exceptions that may be thrown, and warning events that may be raised, by this property.

9.3. IviDmmResistanceTemperatureDevice Functions

The IviDmmResistanceTemperatureDevice extension group defines the following function:

- Configure RTD

This section describes the behavior and requirements of this function.

9.3.1. Configure RTD

Description

This function configures the alpha and resistance parameters for a resistance temperature device.

.NET Method Prototype

```
void Temperature.Rtd.Configure(Double alpha,  
                               Double resistance);
```

COM Method Prototype

```
HRESULT Temperature.RTD.Configure([in] DOUBLE Alpha,  
                                  [in] DOUBLE Resistance);
```

C Prototype

```
ViStatus IviDmm_ConfigureRTD (ViSession Vi,  
                              ViReal64 Alpha  
                              ViReal64 Resistance);
```

Parameters

Inputs	Description	Base Type
Vi	Instrument handle	ViSession
Alpha	Specifies the alpha parameter for an RTD. The driver uses this value to set the Temperature RTD Alpha attribute. See the attribute description for more details.	ViReal64
Resistance	Specifies the resistance of the RTD. The driver uses this value to set the Temperature RTD Resistance attribute. See the attribute description for more details.	ViReal64

Return Values (C/COM)

The *IVI-3.2: Inherent Capabilities Specification* defines general status codes that this function can return.

.NET Exceptions

The *IVI-3.2: Inherent Capabilities Specification* defines general exceptions that may be thrown, and warning events that may be raised, by this method.

9.4. IviDmmResistanceTemperatureDevice Behavior Model

The IviDmmResistanceTemperatureDevice extension group follows the same behavior model as the IviDmmBase capability group described in Section 4.4, *IviDmmBase Behavior Model*.

9.5. IviDmmResistanceTemperatureDevice Compliance Notes

1. IviDmm specific drivers that implement this extension group shall implement the IviDmmTemperatureMeasurement extension group.
2. IviDmm specific drivers that implement this extension group shall implement at least one of the following values for the Temperature Transducer Type attribute in the IviDmmTemperatureMeasurement extension group:
 - 2 Wire RTD
 - 4 Wire RTD

10.IviDmmThermistor Extension Group

10.1.IviDmmThermistor Extension Group Overview

The IviDmmThermistor extension group supports DMMs that take temperature measurements using a thermistor transducer type.

The IviDmm class assumes that you are using an interchangeable thermistor. Interchangeable thermistors are thermistors that exhibit similar behavior for a given resistance value.

10.2.IviDmmThermistor Attributes

The IviDmmThermistor extension group defines the following attribute:

- Thermistor Resistance

This section describes the behavior and requirements of this attribute. The actual value for each attribute ID is defined in Section 18, *IviDmm Attribute ID Definitions*.

10.2.1. Thermistor Resistance

Data Type	Access	Applies To	Coercion	High Level Functions
ViReal64	R/W	N/A	None	Configure Thermistor

.NET Property Name

Temperature.Thermistor.Resistance

COM Property Name

Temperature.Thermistor.Resistance

C Constant Name

IVIDMM_ATTR_TEMP_THERMISTOR_RES

Description

Specifies the resistance of the thermistor in Ohms.

The value of this attribute affects instrument behavior only when the Temperature Transducer Type attribute is set to the Thermistor defined value.

.NET Exceptions

The *IVI-3.2: Inherent Capabilities Specification* defines general exceptions that may be thrown, and warning events that may be raised, by this property.

10.3. IviDmmThermistor Functions

The IviDmmThermistor extension group defines the following function:

- Configure Thermistor (IVI-C only)

This section describes the behavior and requirements of this function.

10.3.1. Configure Thermistor (IVI-C Only)

Description

This function configures the resistance for a thermistor temperature measurement device.

.NET Method Prototype

N/A
(use the Temperature.Thermistor property)

COM Method Prototype

N/A
(use the Temperature.Thermistor property)

C Prototype

```
ViStatus IviDmm_ConfigureThermistor (ViSession Vi,  
ViReal64 Resistance);
```

Parameters

Inputs	Description	Base Type
Vi	Instrument handle	ViSession
Resistance	Specifies the resistance of the thermistor. The driver uses this value to set the Temperature Thermistor Resistance attribute. See the attribute description for more details.	ViReal64

Return Values (C)

The *IVI-3.2: Inherent Capabilities Specification* defines general status codes that this function can return.

10.4. IviDmmThermistor Behavior Model

The IviDmmThermistor extension group follows the same behavior model as IviDmmBase capability group described in Section 4.4, *IviDmmBase Behavior Model*.

10.5. IviDmmThermistor Compliance Notes

1. IviDmm specific drivers that implement this extension group shall implement the IviDmmTemperatureMeasurement extension group.
2. IviDmm specific drivers that implement this extension group shall implement the Thermistor value for the Temperature Transducer Type attribute in the IviDmmTemperatureMeasurement capability group.

11. IviDmmMultiPoint Extension Group

11.1. IviDmmMultiPoint Extension Group Overview

The IviDmmMultiPoint extension group defines extensions for DMMs capable of acquiring measurements based on multiple triggers, and acquiring multiple measurements for each trigger.

The IviDmmMultiPoint extension group defines additional attributes such as sample count, sample trigger, trigger count, and trigger delay to control “multi-point” DMMs. The IviDmmMultiPoint extension group also adds functions for configuring the DMM as well as starting acquisitions and retrieving multiple measured values.

11.2. IviDmmMultiPoint Attributes

The IviDmmBase capability group defines the following attributes:

- Measure Complete Destination
- Sample Count
- Sample Interval
- Sample Trigger
- Trigger Count

This section describes the behavior and requirements of each attribute. The actual value for each attribute ID is defined in Section 18, *IviDmm Attribute ID Definitions*.

11.2.1. Measure Complete Destination

Data Type	Access	Applies To	Coercion	High Level Functions
ViInt32 (C/COM)	R/W	N/A	None	Configure Measure Complete Destination
ViString (.NET)	R/W	N/A	None	N/A

.NET Property Name

`Trigger.MeasurementCompleteDestination`

COM Property Name

`Trigger.MultiPoint.MeasurementComplete`

COM Enumeration Name

`IviDmmMeasCompleteDestEnum`

C Constant Name

`IVIDMM_ATTR_MEAS_COMPLETE_DEST`

Description

After each measurement, the DMM generates a measurement-complete signal. This attribute specifies the destination of the measurement-complete signal. This signal is commonly referred to as Voltmeter Complete.

Defined Values

In IVI.NET the measurement complete destination is a string. If an IVI driver supports a measurement complete destination and the measurement complete destination is listed in IVI-3.3 *Cross Class Capabilities Specification*, Section 3, then the IVI driver shall accept the standard string for that measurement complete destination. This attribute is case insensitive, but case preserving. That is, the setting is case insensitive but when reading it back the programmed case is returned. IVI specific drivers may define new measurement complete destination strings for measurement complete destinations that are not defined by IVI-3.3 *Cross Class Capabilities Specification* if needed.

Name	Description	
	Language	Identifier
None	The measurement complete signal is not routed.	
	C	IVIDMM_VAL_NONE
	COM	IviDmmMeasCompleteDestNone
External	Routes the measurement complete signal to the external connector.	
	C	IVIDMM_VAL_EXTERNAL
	COM	IviDmmMeasCompleteDestExternal
TTL0	Routes the measurement complete signal to TTL0.	
	C	IVIDMM_VAL_TTL0

<i>Name</i>	<i>Description</i>		
		<i>Language</i>	<i>Identifier</i>
		COM	IviDmmMeasCompleteDestTTL0
TTL1	Routes the measurement complete signal to TTL1.		
		C	IVIDMM_VAL_TTL1
		COM	IviDmmMeasCompleteDestTTL1
TTL2	Routes the measurement complete signal to TTL2.		
		C	IVIDMM_VAL_TTL2
		COM	IviDmmMeasCompleteDestTTL2
TTL3	Routes the measurement complete signal to TTL3.		
		C	IVIDMM_VAL_TTL3
		COM	IviDmmMeasCompleteDestTTL3
TTL4	Routes the measurement complete signal to TTL4.		
		C	IVIDMM_VAL_TTL4
		COM	IviDmmMeasCompleteDestTTL4
TTL5	Routes the measurement complete signal to TTL5.		
		C	IVIDMM_VAL_TTL5
		COM	IviDmmMeasCompleteDestTTL5
TTL6	Routes the measurement complete signal to TTL6.		
		C	IVIDMM_VAL_TTL6
		COM	IviDmmMeasCompleteDestTTL6
TTL7	Routes the measurement complete signal to TTL7.		
		C	IVIDMM_VAL_TTL7
		COM	IviDmmMeasCompleteDestTTL7
ECL0	Routes the measurement complete signal to ECL0.		
		C	IVIDMM_VAL_ECL0
		COM	IviDmmMeasCompleteDestECL0
ECL1	Routes the measurement complete signal to ECL1.		
		C	IVIDMM_VAL_ECL1
		COM	IviDmmMeasCompleteDestECL1
PXI Star	Routes the measurement complete signal to the PXI Star trigger bus.		
		C	IVIDMM_VAL_PXI_STAR
		COM	IviDmmMeasCompleteDestPXIStar

<i>Name</i>	<i>Description</i>	
	<i>Language</i>	<i>Identifier</i>
RTSI 0	Routes the measurement complete signal to RTSI0.	
	C	IVIDMM_VAL_RTSI_0
	COM	IviDmmMeasCompleteDestRTSI0
RTSI 1	Routes the measurement complete signal to RTSI1.	
	C	IVIDMM_VAL_RTSI_1
	COM	IviDmmMeasCompleteDestRTSI1
RTSI 2	Routes the measurement complete signal to RTSI2.	
	C	IVIDMM_VAL_RTSI_2
	COM	IviDmmMeasCompleteDestRTSI2
RTSI 3	Routes the measurement complete signal to RTSI3.	
	C	IVIDMM_VAL_RTSI_3
	COM	IviDmmMeasCompleteDestRTSI3
RTSI 4	Routes the measurement complete signal to RTSI4.	
	C	IVIDMM_VAL_RTSI_4
	COM	IviDmmMeasCompleteDestRTSI4
RTSI 5	Routes the measurement complete signal to RTSI5.	
	C	IVIDMM_VAL_RTSI_5
	COM	IviDmmMeasCompleteDestRTSI5
RTSI 6	Routes the measurement complete signal to RTSI6.	
	C	IVIDMM_VAL_RTSI_6
	COM	IviDmmMeasCompleteDestRTSI6

.NET Exceptions

The *IVI-3.2: Inherent Capabilities Specification* defines general exceptions that may be thrown, and warning events that may be raised, by this property.

Compliance Notes

1. If an IVI-C IviDmm specific driver defines additional values for this attribute, the actual values shall be greater than or equal to Trigger Source Specific Extension Base.
2. If an IVI-C IviDmm class driver defines additional values for this attribute, the actual values shall be greater than or equal to Trigger Source Class Extension Base and less than Trigger Source Specific Extension Base.
3. When an IVI-COM specific driver implements this attribute with additional elements in its instrument specific interfaces, it is recommended that the actual values of the additional elements be greater than or equal to Trigger Source Specific Extension Base.

See Section 19, *Attribute Value Definitions*, for the definitions of Trigger Source Specific Extension Base and Trigger Source Class Extension Base.

11.2.2. Sample Count

Data Type	Access	Applies To	Coercion	High Level Functions
ViInt32	R/W	N/A	None	Configure Multi Point

.NET Property Name

`Trigger.MultiPoint.SampleCount`

COM Property Name

`Trigger.MultiPoint.SampleCount`

C Constant Name

`IVIDMM_ATTR_SAMPLE_COUNT`

Description

Specifies the number of measurements the DMM takes each time it receives a trigger.

.NET Exceptions

The *IVI-3.2: Inherent Capabilities Specification* defines general exceptions that may be thrown, and warning events that may be raised, by this property.

11.2.3. Sample Interval

Data Type	Access	Applies To	Coercion	High Level Functions
ViReal64 (C/COM) Ivi.Driver.PrecisionTimeSpan (.NET)	R/W	N/A	Up	Configure Multi Point

.NET Property Name

`Trigger.MultiPoint.SampleInterval`

COM Property Name

`Trigger.MultiPoint.SampleInterval`

C Constant Name

`IVIDMM_ATTR_SAMPLE_INTERVAL`

Description

Specifies the positive interval between samples. This attribute affects instrument behavior only when Sample Count is greater than 1 and Sample Trigger is Interval. For C and COM, the units are seconds. For .NET, the units are implicit in the definition of PrecisionTimeSpan.

.NET Exceptions

The *IVI-3.2: Inherent Capabilities Specification* defines general exceptions that may be thrown, and warning events that may be raised, by this property.

Compliance Notes

1. IviDmm specific drivers that implement this attribute must implement the Interval value for the Sample Trigger attribute.

11.2.4. Sample Trigger

Data Type	Access	Applies To	Coercion	High Level Functions
ViInt32 (C/COM)	R/W	N/A	None	Configure Multi Point
ViString (.NET)	R/W	N/A	None	Configure Multi Point

.NET Property Name

`Trigger.MultiPoint.SampleTrigger`

COM Property Name

`Trigger.MultiPoint.SampleTrigger`

COM Enumeration Name

`IviDmmSampleTriggerEnum`

C Constant Name

`IVIDMM_ATTR_SAMPLE_TRIGGER`

Description

Specifies the sample trigger source. If the value of the Sample Count is greater than 1, the DMM enters the Wait-For-Sample-Trigger state after taking a single measurement. When the event specified by this attribute occurs, the DMM exits the Wait-For-Sample-Trigger state and takes the next measurement.

This attribute affects instrument behavior only when Sample Count is greater than 1.

Defined Values

In IVI.NET the sample source is a string. If an IVI driver supports a sample source and the sample source is listed in IVI-3.3 *Cross Class Capabilities Specification*, Section 3, then the IVI driver shall accept the standard string for that sample source. This attribute is case insensitive, but case preserving. That is, the setting is case insensitive but when reading it back the programmed case is returned. IVI specific drivers may define new sample source strings for sample sources that are not defined by IVI-3.3 *Cross Class Capabilities Specification* if needed.

Name	Description	
	Language	Identifier
Immediate	The DMM exits the Wait-For-Sample-Trigger state immediately after entering. It does not wait for a trigger of any kind.	
	C	IVIDMM_VAL_IMMEDIATE
	COM	IviDmmSampleTriggerImmediate
External	The DMM exits the Wait-For-Sample-Trigger state when a trigger occurs on the external trigger input.	
	C	IVIDMM_VAL_EXTERNAL
	COM	IviDmmSampleTriggerExternal

<i>Name</i>	<i>Description</i>	
	<i>Language</i>	<i>Identifier</i>
Software Trigger	The DMM exits the Wait-For-Sample-Trigger state when the Send Software Trigger function executes. Refer to the Standardized Cross Class Capabilities specification for a complete description of this value and the Send Software Trigger function.	
	C	IVIDMM_VAL_SOFTWARE_TRIG
	COM	IviDmmSampleTriggerSwTrigFunc
Interval	The DMM exits the Wait-For-Sample-Trigger state when the length of time specified by the Sample Interval attribute elapses.	
	C	IVIDMM_VAL_INTERVAL
	COM	IviDmmSampleTriggerInterval
TTL0	The DMM exits the Wait-For-Sample-Trigger state when it receives a trigger on TTL0.	
	C	IVIDMM_VAL_TTL0
	COM	IviDmmSampleTriggerTTL0
TTL1	The DMM exits the Wait-For-Sample-Trigger state when it receives a trigger on TTL1.	
	C	IVIDMM_VAL_TTL1
	COM	IviDmmSampleTriggerTTL1
TTL2	The DMM exits the Wait-For-Sample-Trigger state when it receives a trigger on TTL2.	
	C	IVIDMM_VAL_TTL2
	COM	IviDmmSampleTriggerTTL2
TTL3	The DMM exits the Wait-For-Sample-Trigger state when it receives a trigger on TTL3.	
	C	IVIDMM_VAL_TTL3
	COM	IviDmmSampleTriggerTTL3
TTL4	The DMM exits the Wait-For-Sample-Trigger state when it receives a trigger on TTL4.	
	C	IVIDMM_VAL_TTL4
	COM	IviDmmSampleTriggerTTL4
TTL5	The DMM exits the Wait-For-Sample-Trigger state when it receives a trigger on TTL5.	
	C	IVIDMM_VAL_TTL5
	COM	IviDmmSampleTriggerTTL5

<i>Name</i>	<i>Description</i>	
	<i>Language</i>	<i>Identifier</i>
TTL6	The DMM exits the Wait-For-Sample-Trigger state when it receives a trigger on TTL6.	
	C	IVIDMM_VAL_TTL6
	COM	IviDmmSampleTriggerTTL6
TTL7	The DMM exits the Wait-For-Sample-Trigger state when it receives a trigger on TTL7.	
	C	IVIDMM_VAL_TTL7
	COM	IviDmmSampleTriggerTTL7
ECL0	The DMM exits the Wait-For-Sample-Trigger state when it receives a trigger on ECL0.	
	C	IVIDMM_VAL_ECL0
	COM	IviDmmSampleTriggerECL0
ECL1	The DMM exits the Wait-For-Sample-Trigger state when it receives a trigger on ECL1.	
	C	IVIDMM_VAL_ECL1
	COM	IviDmmSampleTriggerECL1
PXI Star	The DMM exits the Wait-For-Sample-Trigger state when it receives a trigger on the PXI Star trigger bus.	
	C	IVIDMM_VAL_PXI_STAR
	COM	IviDmmSampleTriggerPXIStar
RTSI 0	The DMM exits the Wait-For-Sample-Trigger state when it receives a trigger on RTSI0.	
	C	IVIDMM_VAL_RTSI_0
	COM	IviDmmSampleTriggerRTSI0
RTSI 1	The DMM exits the Wait-For-Sample-Trigger state when it receives a trigger on RTSI1.	
	C	IVIDMM_VAL_RTSI_1
	COM	IviDmmSampleTriggerRTSI1
RTSI 2	The DMM exits the Wait-For-Sample-Trigger state when it receives a trigger on RTSI2.	
	C	IVIDMM_VAL_RTSI_2
	COM	IviDmmSampleTriggerRTSI2
RTSI 3	The DMM exits the Wait-For-Sample-Trigger state when it receives a trigger on RTSI3.	
	C	IVIDMM_VAL_RTSI_3

<i>Name</i>	<i>Description</i>	
	<i>Language</i>	<i>Identifier</i>
	COM	IviDmmSampleTriggerRTSI3
RTSI 4	The DMM exits the Wait-For-Sample-Trigger state when it receives a trigger on RTSI4.	
	C	IVIDMM_VAL_RTSI_4
	COM	IviDmmSampleTriggerRTSI4
RTSI 5	The DMM exits the Wait-For-Sample-Trigger state when it receives a trigger on RTSI5.	
	C	IVIDMM_VAL_RTSI_5
	COM	IviDmmSampleTriggerRTSI5
RTSI 6	The DMM exits the Wait-For-Sample-Trigger state when it receives a trigger on RTSI6.	
	C	IVIDMM_VAL_RTSI_6
	COM	IviDmmSampleTriggerRTSI6

.NET Exceptions

The *IVI-3.2: Inherent Capabilities Specification* defines general exceptions that may be thrown, and warning events that may be raised, by this property.

Compliance Notes

1. If an IviDmm specific driver implements any of the defined values in the following table, it must also implement the corresponding capability group:

Value	Required Capability Group
Software Trigger	IviDmmSoftwareTrigger

2. If the IviDmm specific driver implements the Interval defined value, then it must also implement the Sample Interval attribute.
3. If an IVI-C IviDmm specific driver defines additional values for this attribute, the actual values must be greater than or equal to Trigger Source Specific Extension Base.
4. If an IVI-C IviDmm class driver defines additional values for this attribute, the actual values must be greater than or equal to Trigger Source Class Extension Base and less than Trigger Source Specific Extension Base.
5. When an IVI-COM specific driver implements this attribute with additional elements in its instrument specific interfaces, it is recommended that the actual values of the additional elements be greater than or equal to Trigger Source Specific Extension Base.

See Section 19, *Attribute Value Definitions*, for the definitions of Trigger Source Specific Extension Base and Trigger Source Class Extension Base.

11.2.5. Trigger Count

Data Type	Access	Applies To	Coercion	High Level Functions
ViInt32	R/W	N/A	None	Configure Multi Point

.NET Property Name

`Trigger.MultiPoint.Count`

COM Property Name

`Trigger.MultiPoint.Count`

C Constant Name

`IVIDMM_ATTR_TRIGGER_COUNT`

Description

Specifies the number of triggers the DMM accepts before it returns to the idle state.

.NET Exceptions

The *IVI-3.2: Inherent Capabilities Specification* defines general exceptions that may be thrown, and warning events that may be raised, by this property.

11.3. IviDmmMultiPoint Functions

The IviDmmMultiPoint extension group defines the following functions:

- Configure Measure Complete Destination (IVI-C only)
- Configure Multi Point
- Fetch Multi Point
- Read Multi Point

This section describes the behavior and requirements of each function.

11.3.1. Configure Measure Complete Destination (IVI-C Only)

Description

This function configures the destination of the measurement-complete signal. This signal is commonly referred to as Voltmeter Complete.

.NET Method Prototype

N/A

(use the `Trigger.MultiPoint.MeasurementComplete` property)

COM Method Prototype

N/A

(use the `Trigger.MultiPoint.MeasurementComplete` property)

C Prototype

```
ViStatus IviDmm_ConfigureMeasCompleteDest (ViSession Vi,  
                                           ViInt32 MeasCompleteDest);
```

Parameters

Inputs	Description	Base Type
Vi	Instrument handle	ViSession
MeasCompleteDest	Specifies the measurement complete destination. The driver uses this value to set the Measure Complete Destination attribute. See the attribute description for more details.	ViInt32

Return Values (C)

The *IVI-3.2: Inherent Capabilities Specification* defines general status codes that this function can return.

11.3.2. Configure Multi Point

Description

This function configures the attributes for multi-point measurements. These attributes include the trigger count, sample count, sample trigger and sample interval.

If the value of the `SampleCount` parameter is 1, then the `SampleTrigger` and `SampleInterval` parameters are ignored and are not used to set the Sample Trigger and Sample Interval attributes.

If the value of the `SampleTrigger` parameter is not `Interval`, then the `SampleInterval` parameter is ignored and is not used to set the Sample Interval attribute.

.NET Method Prototype

```
void Trigger.MultiPoint.Configure(  
    Double triggerCount,  
    Double sampleCount,  
    String sampleTrigger,  
    Ivi.Driver.PrecisionTimeSpan sampleInterval);
```

COM Method Prototype

```
HRESULT Trigger.MultiPoint.Configure(  
    [in] LONG TriggerCount,  
    [in] LONG SampleCount,  
    [in] IviDmmSampleTriggerEnum SampleTrigger,  
    [in] DOUBLE SampleInterval);
```

C Prototype

```
ViStatus IviDmm_ConfigureMultiPoint (ViSession Vi,  
    ViInt32 TriggerCount,  
    ViInt32 SampleCount,  
    ViInt32 SampleTrigger,  
    ViReal64 SampleInterval);
```

Parameters

Inputs	Description	Base Type
Vi	Instrument handle	ViSession
TriggerCount	Specifies the trigger count. The driver uses this value to set the Trigger Count attribute. See the attribute description for more details.	ViInt32
SampleCount	Specifies the sample count. The driver uses this value to set the Sample Count attribute. See the attribute description for more details	ViInt32
SampleTrigger	Specifies the sample trigger source. The driver uses this value to set the Sample Trigger attribute. See the attribute description for more details	ViInt32 (C/COM) ViString (.NET)
SampleInterval	Specifies the sample interval. The driver uses this value to set the Sample Interval attribute. See the attribute description for more details	ViReal64 (C/COM) Ivi.Driver. PrecisionTimeSpan (.NET)

Return Values (C/COM)

The *IVI-3.2: Inherent Capabilities Specification* defines general status codes that this function can return.

.NET Exceptions

The *IVI-3.2: Inherent Capabilities Specification* defines general exceptions that may be thrown, and warning events that may be raised, by this method.

11.3.3.Fetch Multi Point

Description

This function returns an array of values from a measurement that the Initiate function initiates. After this function executes, each element in the `ReadingArray` parameter is an actual reading or a value indicating that an overrange condition occurred. The number of measurements the DMM takes is determined by the Trigger Count and Sample Count.

The behavior is different for IVI-C/IVI-COM and IVI.NET as follows:

IVI-C/IVI-COM If an overrange condition occurs, the corresponding `ReadingArray` element contains an IEEE defined NaN (Not a Number) value and the function returns the Over Range completion code. The user may test each element in the `ReadingArray` parameter for overrange with the `Is Over Range` function.

IVI.NET For .NET, out of range conditions are checked by using the `Is Over Range`, `Is Under Range`, or `Is Out Of Range` methods.

For .NET a `maximumTime` of `PrecisionTimeSpan.Zero` indicates that the measurement should only be returned if it is already available. A `maximumTime` of `PrecisionTimeSpan.MaxValue` indicates that the measurement should wait until a measurement is available, with no timeout.

In most instrument classes, there is a programmatic way to determine when a measurement has completed and data is available. Therefore, a `MaxTimeMilliseconds` parameter is not needed in the Fetch function for these classes. This is not true for the majority of DMMs. The `MaxTimeMilliseconds` parameter specifies how long to wait in the Fetch Multi Point operation since it is possible that no data is available or the trigger event did not occur.

This function does not check the instrument status. Typically, the end-user calls this function only in a sequence of calls to other low-level driver functions. The sequence performs one operation. The end-user uses the low-level functions to optimize one or more aspects of interaction with the instrument. To check the instrument status, call the `Error Query` function at the conclusion of the sequence.

The value of the `Function` attribute determines the units for each element of the `ReadingArray` parameter. The following table shows the defined values for the `Function` attribute and the corresponding units for each element of the `ReadingArray` parameter.

Values for FUNCTION ATTRIBUTE	Units for readingArray parameter
DC Volts	Volts
AC Volts	Volts
DC Current	Amps
AC Current	Amps
2 Wire Resistance	Ohms
4 Wire Resistance	Ohms
AC Plus DC Volts	Volts
AC Plus DC Current	Amps
Freq	Hertz

Period	Seconds
Temperature	Degrees Celsius

This function is not guaranteed to return valid data if the user performs other operations on the instrument after the call to Initiate and prior to calling this function. This includes other calls to Fetch Multi Point.

.NET Method Prototype

```
Double[] Measurement.FetchMultiPoint(PrecisionTimeSpan maximumTime);
Double[] Measurement.FetchMultiPoint(PrecisionTimeSpan maximumTime,
                                      Int32 numberOfMeasurements);
```

COM Method Prototype

```
HRESULT Measurement.FetchMultiPoint(
    [in] LONG MaxTimeMilliseconds,
    [out, retval] SAFEARRAY (DOUBLE) *ReadingArray);
```

C Prototype

```
ViStatus IviDmm_FetchMultiPoint (ViSession Vi,
                                  ViInt32 MaxTimeMilliseconds,
                                  ViInt32 ArraySize,
                                  ViReal64 ReadingArray[],
                                  ViInt32 *ActualPts);
```

Parameters

Inputs	Description	Base Type
Vi	Instrument handle	ViSession
MaxTimeMilliseconds (C/COM)	Specifies the maximum length of time allowed for the function to complete in milliseconds.	ViInt32
maximumTime (.NET)	Specifies the maximum length of time allowed for the function to complete.	PrecisionTimeSpan
ArraySize	Specifies the number of elements in the readingArray.	ViInt32
numberOfMeasurements (.NET)	The number of measurements to be returned from the multi-point measurement. If this number is greater than (Trigger Count * Sample Count), the method will return exactly (Trigger Count * Sample Count) measurements.	ViInt32

Outputs	Description	Base Type
ReadingArray (C/COM)	A user-allocated (for IVI_C) or driver-allocated (for IVI-COM) buffer into which the measured values are stored.	ViReal64[]
ActualPts	The number of measured values placed in readingArray.	ViInt32
Return value (.NET)	A driver-allocated buffer into which the measured values are stored.	ViReal64[]

Defined Values for the MaxTimeMilliseconds Parameter

Name	Description	
	Language	Identifier
Max Time Immediate	The function returns immediately. If no valid measurement value exists, the function returns an error.	
	C	IVIDMM_VAL_MAX_TIME_IMMEDIATE
	COM	IviDmmMaxTimeImmediate
Max Time Infinite	The function waits indefinitely for the measurement to complete.	
	C	IVIDMM_VAL_MAX_TIME_INFINITE
	COM	IviDmmMaxTimeInfinite

Defined Values for the MaximumTime Parameter (.NET)

<i>Name</i>	<i>Description</i>	
	<i>Language</i>	<i>Identifier</i>
Zero	The function returns immediately. If no valid measurement value exists, the function returns an error.	
	.NET	PrecisionTimeSpan.Zero
MaxValue	The function waits indefinitely for the measurement to complete.	
	.NET	PrecisionTimeSpan.MaxValue

Return Values (C/COM)

The *IVI-3.2: Inherent Capabilities Specification* defines general status codes that this function can return. The table below specifies additional class-defined status codes for this function.

Completion Codes	Description
Over Range	Overrange warning
Max Time Exceeded	Max time exceeded before the operation completed

.NET Exceptions

The *IVI-3.2: Inherent Capabilities Specification* defines general exceptions that may be thrown, and warning events that may be raised, by this method.

Note that the .NET MaxTimeExceededException is defined in *IVI-3.2: Inherent Capabilities Specification*.

11.3.4. Read Multi Point

Description

This function initiates the measurement, waits for the DMM to return to the Idle state, and returns an array of measured values. The number of measurements the DMM takes is determined by the Trigger Count and Sample Count.

The behavior is different for IVI-C/IVI-Com and IVI.NET as follows:

IVI-C/IVI-COM, After this function executes, each element in the `ReadingArray` parameter is an actual reading or a value indicating that an overrange condition occurred. If an overrange condition occurs, the corresponding `ReadingArray` element contains an IEEE defined NaN (Not a Number) value and the function returns Over Range. Test each element in the `ReadingArray` parameter for overrange with the `Is Over Range` function.

IVI.NET For .NET, out of range conditions are checked by using the `Is Over Range`, `Is Under Range`, or `Is Out Of Range` methods.

The value of the Function attribute determines the units for each element of the `ReadingArray` parameter. Refer to Section 11.3.3, `Fetch Multi Point` for more details.

.NET Method Prototype

```
Double[] Measurement.ReadMultiPoint(PrecisionTimeSpan maximumTime);  
Double[] Measurement.ReadMultiPoint(PrecisionTimeSpan maximumTime,  
                                     Int32 numberOfMeasurements);
```

COM Method Prototype

```
HRESULT Measurement.ReadMultiPoint(  
    [in] LONG MaxTimeMilliseconds,  
    [out, retval] SAFEARRAY (DOUBLE) *ReadingArray);
```

C Prototype

```
ViStatus IviDmm_ReadMultiPoint (ViSession Vi,  
                                ViInt32 MaxTimeMilliseconds,  
                                ViInt32 ArraySize,  
                                ViReal64 ReadingArray[],  
                                ViInt32 *ActualPts);
```

Parameters

Inputs	Description	Base Type
Vi	Instrument handle	ViSession
MaxTimeMilliseconds (C/COM)	Specifies the maximum length of time allowed for the function to complete in milliseconds.	ViInt32
maximumTime (.NET)	Specifies the maximum length of time allowed for the function to complete.	PrecisionTimeSpan
ArraySize	Specifies the number of elements in the readingArray.	ViInt32
numberOfMeasurements (.NET)	The number of measurements to be returned from the multi-point measurement. If this number is greater than (Trigger Count * Sample Count), the method will return exactly (Trigger Count * Sample Count) measurements.	ViInt32

Outputs	Description	Base Type
ReadingArray (C/COM)	A user-allocated (for IVI_C) or driver-allocated (for IVI-COM) buffer into which the measured values are stored.	ViReal64[]
ActualPts	The number of measured values placed in readingArray.	ViInt32
Return value (.NET)	A driver-allocated buffer into which the measured values are stored.	ViReal64[]

Defined Values for the MaxTimeMilliseconds Parameter

Name	Description	
	Language	Identifier
Max Time Immediate	The function returns immediately. If no valid measurement value exists, the function returns an error.	
	C	IVIDMM_VAL_MAX_TIME_IMMEDIATE
	COM	IviDmmMaxTimeImmediate
Max Time Infinite	The function waits indefinitely for the measurement to complete.	
	C	IVIDMM_VAL_MAX_TIME_INFINITE
	COM	IviDmmMaxTimeInfinite

Defined Values for the MaximumTime Parameter (.NET)

<i>Name</i>	<i>Description</i>	
	<i>Language</i>	<i>Identifier</i>
Zero	The function returns immediately. If no valid measurement value exists, the function returns an error.	
	.NET	PrecisionTimeSpan.Zero
MaxValue	The function waits indefinitely for the measurement to complete.	
	.NET	PrecisionTimeSpan.MaxValue

Return Values (C/COM)

The *IVI-3.2: Inherent Capabilities Specification* defines general status codes that this function can return. The table below specifies additional class-defined status codes for this function.

Completion Codes	Description
Over Range	Overrange warning
Max Time Exceeded	Max time exceeded before the operation completed

.NET Exceptions

The *IVI-3.2: Inherent Capabilities Specification* defines general exceptions that may be thrown, and warning events that may be raised, by this method.

Note that the .NET MaxTimeExceededException is defined in *IVI-3.2: Inherent Capabilities Specification*.

11.4. IviDmmMultiPoint Behavior Model

The following behavior model shows the relationship between the IviDmmMultiPoint extension group and DMM behavior.

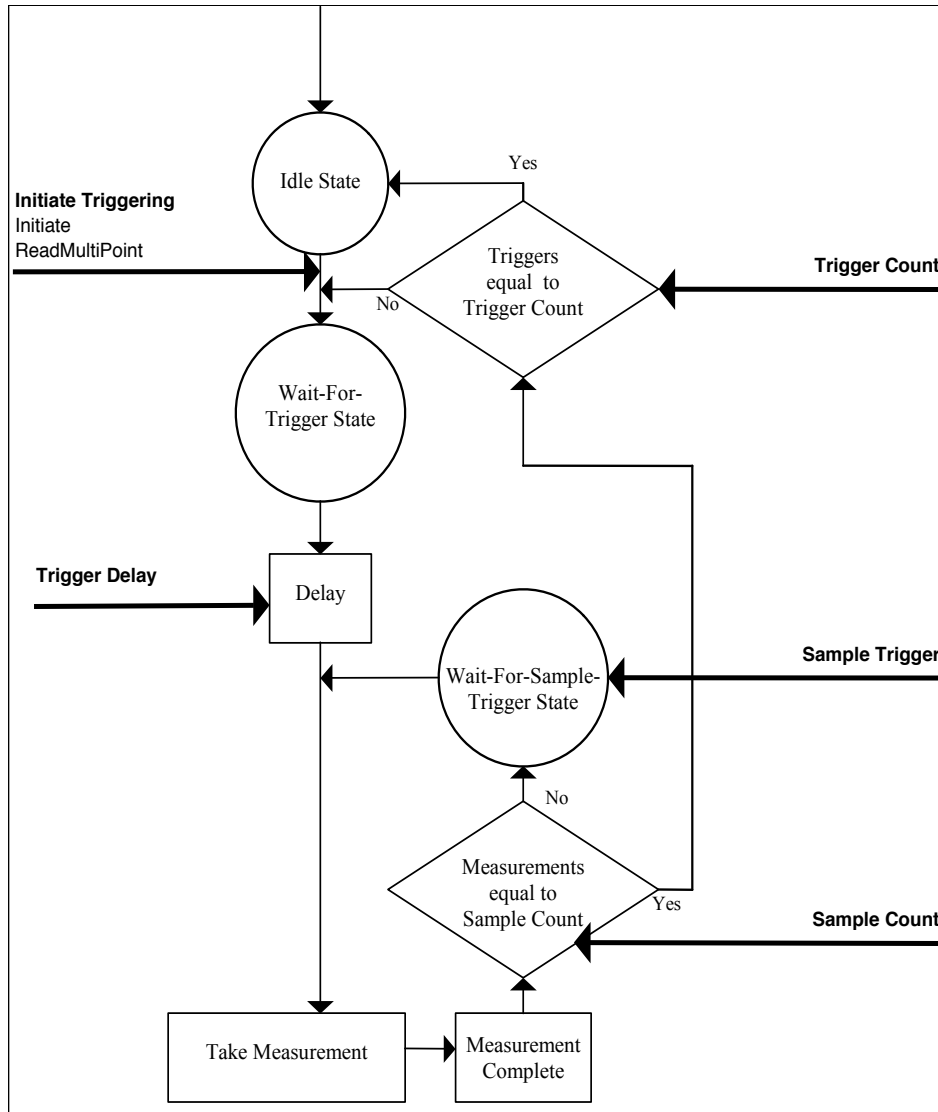


Figure 11-1. IviDmmMultiPoint Behavior Model

The IviDmmMultiPoint behavior model builds upon the fundamental IviDmm behavior model and only documents additional items introduced by the IviDmmMultiPoint extension group. The main state is the Idle state. Typically, the user configures the IviDmmMultiPoint attributes while DMM is in the Idle state. IviDmmMultiPoint attributes can be configured individually with the Set Attribute function or with the high-level Configure Multi Point function.

The Initiate and ReadMultiPoint functions cause the DMM to leave the Idle state and transition to the Wait-For-Trigger state. The ReadMultiPoint function does not return until the measurement process is complete and the DMM returns to the Idle state. The Initiate function returns as soon as the DMM leaves the Idle state.

The IviDmmMultiPoint extension group does not add additional capabilities to the Wait-For-Trigger state.

After the DMM leaves the Wait-For-Trigger state, it then executes a delay. The length of the delay is specified by the attribute Trigger Delay. After the measurement is taken, the DMM then, if it is capable of doing so, generates the Measurement Complete signal.

The DMM then compares the sample count with the number of measurements taken since the last trigger event. The sample count is specified by the attribute Sample Count. If the number measurements is not equal to the sample count the DMM moves to the Wait-For-Sample-Trigger state. The DMM remains in the Wait-For-Sample-Trigger state until the event specified by the attribute Sample Trigger occurs. Then it takes another measurement.

Once the number of measurements taken is equal to the sample count, the DMM then compares the number trigger count with the number of trigger events that have occurred since either the Initiate or Read Multi Point function was called. The trigger count is specified by the attribute Trigger Count. If the number of trigger events is not equal to the trigger count, the DMM returns to the Wait-For-Trigger state.

Once the number of trigger events is equal to the trigger count, the DMM returns to the Idle state. The Fetch Multi Point function is used to retrieve measured data from measurements initiated by the Initiate function. The measurement data returned from the Read Multi Point and Fetch Multi Point functions is acquired after the DMM has left the Wait-For-Trigger state.

12.IviDmmTriggerSlope Extension Group

12.1.IviDmmTriggerSlope Extension Group Overview

The IviDmmTriggerSlope extension group supports DMMs that can specify the polarity of the external trigger signal. It defines an attribute and a function to configure this polarity.

Special Note To Users

Typically the specific driver disables extension groups that the application program does not explicitly use or enable. The IviDmmTriggerSlope extension capability group affects the behavior of the instrument regardless of the value of the Trigger Slope attribute. It is not possible for the specific driver to disable this extension capability group.

Therefore, it is the responsibility of the user to ensure that the slope of the trigger signal is correct for their application. Most DMMs do not have a programmable trigger slope and do not implement the IviDmmTriggerSlope extension capability group. Users should avoid using the IviDmmTriggerSlope extension capability in their test program source code so that they can maximize the set of instruments that they can use interchangeably.

For instrument drivers that implement the IviDmmTriggerSlope extension, the user can set the value of the Trigger Slope attribute in the IVI configuration file. For instruments that do not implement the IviDmmTriggerSlope extension group, the user must ensure that trigger signal that their instrument receives has the correct polarity. This can be done with external circuitry.

12.2.IviDmmTriggerSlope Attributes

The IviDmmTriggerSlope extension group defines the following attribute:

- Trigger Slope

This section describes the behavior and requirements of this attribute. The actual value for each attribute ID is defined in Section 18, *IviDmm Attribute ID Definitions*.

12.2.1. Trigger Slope

Data Type	Access	Applies To	Coercion	High Level Functions
ViInt32	R/W	N/A	None	Configure Trigger Slope

.NET Property Name

Trigger.Slope

.NET Enumeration Name

Slope

COM Property Name

Trigger.Slope

COM Enumeration Name

IviDmmTriggerSlopeEnum

C Constant Name

IVIDMM_ATTR_TRIGGER_SLOPE

Description

Specifies the polarity of the external trigger slope. The DMM triggers on either the rising or the falling edge of the external trigger source depending on the value of this attribute.

Defined Values

<i>Name</i>	<i>Description</i>	
	<i>Language</i>	<i>Identifier</i>
Positive	Sets the trigger event to occur on the rising edge of the trigger pulse.	
	.NET	Slope.Positive
	C	IVIDMM_VAL_POSITIVE
Negative	Sets the trigger event to occur on the falling edge of the trigger pulse.	
	.NET	Slope.Negative
	C	IVIDMM_VAL_NEGATIVE
	COM	IviDmmTriggerSlopePositive
	COM	IviDmmTriggerSlopeNegative

.NET Exceptions

The *IVI-3.2: Inherent Capabilities Specification* defines general exceptions that may be thrown, and warning events that may be raised, by this property.

Compliance Notes

1. If an IVI-C IviDmm specific driver defines additional values for this attribute, the magnitude of the actual values must be greater than or equal to Trigger Slope Specific Extension Base.
2. If an IVI-C IviDmm class driver defines additional values for this attribute, the magnitude of the actual values must be greater than or equal to Trigger Slope Class Extension Base and less than Trigger Slope Specific Extension Base.
3. When an IVI-COM specific driver implements this attribute with additional elements in its instrument specific interfaces, it is recommended that the actual values of the additional elements be greater than or equal to Trigger Slope Specific Extension Base.

See Section 19, *Attribute Value Definitions*, for the definitions of Trigger Slope Specific Extension Base and Trigger Slope Class Extension Base.

12.3. IviDmmTriggerSlope Functions

The IviDmmTriggerSlope extension group defines the following function:

- Configure Trigger Slope (IVI-C only)

This section describes the behavior and requirements of this function.

12.3.1. Configure Trigger Slope (IVI-C Only)

Description

This function configures the polarity of the external trigger source of the DMM.

.NET Method Prototype

N/A
(use the `Trigger.Slope` property)

COM Method Prototype

N/A
(use the `Trigger.Slope` property)

C Prototype

```
ViStatus IviDmm_ConfigureTriggerSlope (ViSession Vi,  
                                       ViInt32 Polarity);
```

Parameters

Inputs	Description	Base Type
Vi	Instrument handle	ViSession
Polarity	Specifies the trigger slope. The driver uses this value to set the Trigger Slope attribute. See the attribute description for more details.	ViInt32

Return Values (C)

The *IVI-3.2: Inherent Capabilities Specification* defines general status codes that this function can return.

12.4. IviDmmTriggerSlope Behavior Model

The IviDmmTriggerSlope extension group follows the same behavior model as the IviDmmBase capability group described in Section 4.4, *IviDmmBase Behavior Model*.

13. IviDmmSoftwareTrigger Extension Group

13.1. IviDmmSoftwareTrigger Extension Group Overview

The IviDmmSoftwareTrigger extension group supports DMMs that can initiate a measurement based on a software trigger signal. The user can send a software trigger to cause the DMM to initiate a measurement.

13.2. IviDmmSoftwareTrigger Functions

The IviDmmSoftwareTrigger extension group defines the following function:

- Send Software Trigger

This section describes the behavior and requirements of this function.

13.2.1. IviDmm_SendSoftwareTrigger

Refer to *IVI-3.3: Standardized Cross Class Capabilities Specification* for the prototype and complete description of this function.

13.3. IviDmmSoftwareTrigger Behavior Model

The behavior model of the IviDmmSoftwareTrigger follows the behavior model of the IviDmmBase capability group as described in Section 4.4, *IviDmmBase Behavior Model* and the IviDmmMultiPoint extension group described in Section 11.4, *IviDmmMultiPoint Behavior Model*. Furthermore, it defines an additional trigger event for the trigger source.

The DMM leaves the Wait-For-Trigger state when it receives a trigger event specified by the Trigger Source attribute. The DMM leaves the Wait-For-Sample-Trigger state when it receives a trigger event specified by the Sample Trigger attribute. When the trigger source or sample trigger is set to Software Trigger, the Send Software Trigger function is used to generate the trigger event. Calling this function causes the DMM to take a measurement.

13.4. IviDmmSoftwareTrigger Compliance Notes

1. IviDmm specific drivers that implement this extension group shall implement the Software Trigger value for the Trigger Source attribute in the IviDmmBase capability group.

14. IviDmmDeviceInfo Extension Group

14.1. IviDmmDeviceInfo Extension Group Overview

The IviDmmDeviceInfo extension group defines a set of read-only attributes for DMMs that can be queried to determine how they are presently configured. These attributes are the aperture time and the aperture time units.

14.2. IviDmmDeviceInfo Attributes

The IviDmmDeviceInfo extension group defines the following attributes:

- Aperture Time
- Aperture Time Units

This section describes the behavior and requirements of each attribute. The actual value for each attribute ID is defined in Section 18, *IviDmm Attribute ID Definitions*.

14.2.1. Aperture Time

Data Type	Access	Applies To	Coercion	High Level Functions
ViReal64	RO	N/A	None	Get Aperture Time Info

.NET Property Name

`Advanced.ApertureTime`

COM Property Name

`Advanced.ApertureTime`

C Constant Name

`IVIDMM_ATTR_APERTURE_TIME`

Description

Returns the measurement aperture time based on the present configuration. The units for this attribute are specified by attribute Aperture Time Units.

The aperture time is also known as the integration time.

.NET Exceptions

The *IVI-3.2: Inherent Capabilities Specification* defines general exceptions that may be thrown, and warning events that may be raised, by this property.

14.2.2. Aperture Time Units

Data Type	Access	Applies To	Coercion	High Level Functions
ViInt32	RO	N/A	None	Get Aperture Time Info

.NET Property Name

`Advanced.ApertureTimeUnits`

.NET Enumeration Name

`ApertureTimeUnits`

COM Property Name

`Advanced.ApertureTimeUnits`

COM Enumeration Name

`IviDmmApertureTimeUnitsEnum`

C Constant Name

`IVIDMM_ATTR_APERTURE_TIME_UNITS`

Description

Returns the units for the Aperture Time attribute.

Defined Values

<i>Name</i>	<i>Description</i>	
	<i>Language</i>	<i>Identifier</i>
Seconds	Reports that the units for the value returned by Aperture Time are seconds.	
	.NET	<code>ApertureTimeUnits.Seconds</code>
	C	<code>IVIDMM_VAL_SECONDS</code>
	COM	<code>IviDmmApertureSeconds</code>
Power Line Cycles	Reports that the units for the value returned by Aperture Time are Power Line Cycles.	
	.NET	<code>ApertureTimeUnits.PowerlineCycles</code>
	C	<code>IVIDMM_VAL_POWER_LINE_CYCLES</code>
	COM	<code>IviDmmAperturePowerLineCycles</code>

.NET Exceptions

The *IVI-3.2: Inherent Capabilities Specification* defines general exceptions that may be thrown, and warning events that may be raised, by this property.

14.3. IviDmmDeviceInfo Functions

The IviDmmDeviceInfo extension group defines the following function:

- Get Aperture Time Info (IVI-C only)

This section describes the behavior and requirements of this function.

14.3.1. Get Aperture Time Info (IVI-C Only)

Description

This function returns additional information about the state of the instrument. Specifically, it returns the aperture time and the aperture time units.

.NET Method Prototype

N/A

(use the `Advanced.ApertureTime` and `Advanced.ApertureTimeUnits` properties)

COM Method Prototype

N/A

(use the `Advanced.ApertureTime` and `Advanced.ApertureTimeUnits` properties)

C Prototype

```
ViStatus IviDmm_GetApertureTimeInfo (ViSession Vi  
                                     ViReal64 *ApertureTime,  
                                     ViInt32 *ApertureTimeUnits);
```

Parameters

Inputs	Description	Base Type
Vi	Instrument handle	ViSession

Outputs	Description	Base Type
ApertureTime	Returns the value of the Aperture Time attribute. See the attribute description for more details.	ViReal64
ApertureTimeUnits	Returns the value of the Aperture Time Units attribute. See the attribute description for more details.	ViInt32

Return Values (C)

The *IVI-3.2: Inherent Capabilities Specification* defines general status codes that this function can return.

14.4. IviDmmDeviceInfo Behavior Model

The IviDmmDeviceInfo extension group follows the same behavior model as the IviDmmBase capability group described in Section 4.4, *IviDmmBase Behavior Model*.

15.IviDmmAutoRangeValue Extension Group

15.1.IviDmmAutoRangeValue Extension Group Overview

The IviDmmAutoRangeValue extension supports DMMs with the capability to return the actual range value when auto ranging.

15.2.IviDmmAutoRangeValue Attributes

The IviDmmAutoRangeValue extension group defines the following attribute:

- Auto Range Value

This section describes the behavior and requirements of this attribute. The actual value for each attribute ID is defined in Section 18, *IviDmm Attribute ID Definitions*.

15.2.1.Auto Range Value (IVI-C and IVI-COM Only)

Data Type	Access	Applies To	Coercion	High Level Functions
ViReal64	RO	N/A	None	Get Auto Range Value

.NET Property Name

(use the Range property)

COM Property Name

Advanced.ActualRange

C Constant Name

IVIDMM_ATTR_AUTO_RANGE_VALUE

Description

Returns the actual range that the DMM is currently using, even while it is auto-ranging.

15.3. IviDmmAutoRangeValue Functions

The IviDmmAutoRangeValue extension group defines the following function:

- Get Auto Range Value (IVI-C only)

This section describes the behavior and requirements of this function.

15.3.1. Get Auto Range Value (IVI-C Only)

Description

This function returns the actual range the DMM is currently using, even while it is auto-ranging.

.NET Method Prototype

N/A
(use the Range property)

COM Method Prototype

N/A
(use the Advanced.ActualRange property)

C Prototype

```
ViStatus IviDmm_GetAutoRangeValue (ViSession Vi  
ViReal64 *AutoRangeValue);
```

Parameters

Inputs	Description	Base Type
Vi	Instrument handle	ViSession

Outputs	Description	Base Type
AutoRangeValue	Returns the value of the Range Value attribute. See the attribute description for more details.	ViReal64

Return Values (C)

The *IVI-3.2: Inherent Capabilities Specification* defines general status codes that this function can return.

15.4. IviDmmAutoRangeValue Behavior Model

The IviDmmAutoRangeValue extension group follows the same behavior model as the IviDmmBase capability group described in Section 4.4, *IviDmmBase Behavior Model*.

15.5. IviDmmAutoRangeValue Compliance Notes

1. If the IviDmm specific driver implements this extension group, then it shall also implement the Auto Range On value for the Range attribute in the IviDmmBase capability group.

16.IviDmmAutoZero Extension Group

16.1.IviDmmAutoZero Extension Group Overview

The IviDmmAutoZero extension supports DMMs with the capability to take an auto zero reading. In general, the auto zero capability of a DMM normalizes all measurements based on a Zero Reading.

16.2.IviDmmAutoZero Attributes

The IviDmmAutoZero extension group defines the following attribute:

- Auto Zero

This section describes the behavior and requirements of this attribute. The actual value for each attribute ID is defined in Section 18, *IviDmm Attribute ID Definitions*.

16.2.1.Auto Zero

Data Type	Access	Applies To	Coercion	High Level Functions
ViInt32	R/W	N/A	None	Configure Auto Zero Mode

.NET Property Name

`Advanced.AutoZero`

.NET Enumeration Name

`Auto`

COM Property Name

`Advanced.AutoZero`

COM Enumeration Name

`IviDmmAutoZeroEnum`

C Constant Name

`IVIDMM_ATTR_AUTO_ZERO`

Description

Specifies the auto zero mode. When the auto zero mode is enabled, the DMM internally disconnects the input signal and takes a Zero Reading. The DMM then subtracts the Zero Reading from the measurement. This prevents offset voltages present in the instrument's input circuitry from affecting measurement accuracy.

Defined Values

<i>Name</i>	<i>Description</i>	
	<i>Language</i>	<i>Identifier</i>
Auto Zero Off	Disables the auto zero feature.	
	.NET	Auto.Off
	C	IVIDMM_VAL_AUTO_ZERO_OFF
	COM	IviDmmAutoZeroOff
Auto Zero On	Configures the DMM to take a Zero Reading for each measurement. The DMM subtracts the Zero Reading from the value it measures.	
	.NET	Auto.On
	C	IVIDMM_VAL_AUTO_ZERO_ON
	COM	IviDmmAutoZeroOn
Auto Zero Once	Configures the DMM to take a Zero Reading immediately. The DMM then subtracts this Zero Reading from all subsequent values it measures.	
	.NET	Auto.Once
	C	IVIDMM_VAL_AUTO_ZERO_ONCE
	COM	IviDmmAutoZeroOnce

.NET Exceptions

The *IVI-3.2: Inherent Capabilities Specification* defines general exceptions that may be thrown, and warning events that may be raised, by this property.

Compliance Notes

1. If an IVI-C IviDmm specific driver defines additional values for this attribute, the magnitude of the actual values shall be greater than or equal to Auto Zero Specific Extension Base.
2. If an IVI-C IviDmm class driver defines additional values for this attribute, the magnitude of the actual values shall be greater than or equal to Auto Zero Class Extension Base and less than Auto Zero Specific Extension Base.
3. When an IVI-COM specific driver implements this attribute with additional elements in its instrument specific interfaces, it is recommended that the actual values of the additional elements be greater than or equal to Auto Zero Specific Extension Base.

See Section 19, *Attribute Value Definitions*, for the definitions of Auto Zero Specific Extension Base and Auto Zero Class Extension Base.

16.3. IviDmmAutoZero Functions

The IviDmmAutoZero extension group defines the following function:

- Configure Auto Zero Mode (IVI-C only)

This section describes the behavior and requirements of this function.

16.3.1. Configure Auto Zero Mode (IVI-C Only)

Description

This function configures the auto zero mode of the DMM.

.NET Method Prototype

N/A
(use the `Advanced.AutoZero` property)

COM Method Prototype

N/A
(use the `Advanced.AutoZero` property)

C Prototype

```
ViStatus IviDmm_ConfigureAutoZeroMode (ViSession Vi  
                                       ViInt32 AutoZeroMode);
```

Parameters

Inputs	Description	Base Type
Vi	Instrument handle	ViSession
AutoZeroMode	Specifies the auto zero mode The driver uses this value to set the Auto Zero attribute. See the attribute description for more details.	ViInt32

Return Values (C)

The *IVI-3.2: Inherent Capabilities Specification* defines general status codes that this function can return.

16.4. IviDmmAutoZero Behavior Model

The IviDmmAutoZero extension group follows the same behavior model as the IviDmmBase capability group described in Section 4.4, *IviDmmBase Behavior Model*.

17. IviDmmPowerLineFrequency Extension Group

17.1. IviDmmPowerLineFrequency Extension Group Overview

The IviDmmPowerLineFrequency extension supports DMMs with the capability to specify the power line frequency.

Special Note To Users

Typically the specific driver disables extension groups that the application program does not explicitly use or enable. The IviDmmPowerLineFrequency extension capability group affects the behavior of the instrument regardless of the value of the Powerline Freq attribute. It is not possible for the specific driver to disable this extension capability group.

Therefore, it is the responsibility of the user to ensure that the power line frequency is correct for their application. Most DMMs do not have a programmable power line frequency and do not implement the IviDmmPowerLineFrequency extension capability group. Users should avoid using the IviDmmPowerLineFrequency extension group in their test program source code so that they can maximize the set of instruments that they can use interchangeably.

For instrument drivers that implement the IviDmmPowerLineFrequency extension, the user can set the value of the Powerline Freq attribute in the IVI configuration file. For instruments that do not implement the IviDmmPowerLineFrequency extension group, the user must ensure that their instrument is set to use the correct power line frequency. Users can manually change the power line frequency setting on most DMMs by means of a switch on the instrument's back panel.

17.2. IviDmmPowerLineFrequency Attributes

The IviDmmPowerLineFrequency extension group defines the following attribute:

- Powerline Frequency

This section describes the behavior and requirements of this attribute. The actual value for each attribute ID is defined in Section 18, *IviDmm Attribute ID Definitions*.

17.2.1. Powerline Frequency

Data Type	Access	Applies To	Coercion	High Level Functions
ViReal64	R/W	N/A	None	Configure Power Line Frequency

.NET Property Name

`Advanced.PowerlineFrequency`

COM Property Name

`Advanced.PowerlineFrequency`

C Constant Name

`IVIDMM_ATTR_POWERLINE_FREQ`

Description

Specifies the power line frequency in Hertz.

.NET Exceptions

The *IVI-3.2: Inherent Capabilities Specification* defines general exceptions that may be thrown, and warning events that may be raised, by this property.

17.3. IviDmmPowerLineFrequency Functions

The IviDmmPowerLineFrequency extension group defines the following function:

- Configure Power Line Frequency (IVI-C only)

This section describes the behavior and requirements of this function.

17.3.1. Configure Power Line Frequency (IVI-C Only)

Description

This function configures the power line frequency of the DMM.

.NET Method Prototype

N/A

(use the `Advanced.PowerlineFrequency` property)

COM Method Prototype

N/A

(use the `Advanced.PowerlineFrequency` property)

C Prototype

```
ViStatus IviDmm_ConfigurePowerLineFrequency (ViSession Vi  
                                              ViReal64 PowerLineFreq);
```

Parameters

Inputs	Description	Base Type
Vi	Instrument handle	ViSession
PowerLineFreq	Specifies the power line frequency The driver uses this value to set the Powerline Freq attribute. See the attribute description for more details.	ViReal64

Return Values (C)

The *IVI-3.2: Inherent Capabilities Specification* defines general status codes that this function can return.

17.4. IviDmmPowerLineFrequency Behavior Model

The IviDmmPowerLineFrequency extension group follows the same behavior model as the IviDmmBase capability group described in Section 4.4, *IviDmmBase Behavior Model*.

18.IviDmm Attribute ID Definitions

The following table defines the ID value for all IviDmm class attributes.

Table 18-1. IviDmm Attributes ID Values

Attribute Name	ID Definition
Function	IVI_CLASS_ATTR_BASE + 1
Range	IVI_CLASS_ATTR_BASE + 2
Resolution Absolute	IVI_CLASS_ATTR_BASE + 8
Trigger Source	IVI_CLASS_ATTR_BASE + 4
Trigger Delay	IVI_CLASS_ATTR_BASE + 5
AC Min Frequency	IVI_CLASS_ATTR_BASE + 6
AC Max Frequency	IVI_CLASS_ATTR_BASE + 7
Freq Voltage Range	IVI_CLASS_ATTR_BASE + 101
Temperature Transducer Type	IVI_CLASS_ATTR_BASE + 201
Thermocouple Type	IVI_CLASS_ATTR_BASE + 231
Thermocouple Reference Junction Type	IVI_CLASS_ATTR_BASE + 232
Thermocouple Fixed Reference Junction	IVI_CLASS_ATTR_BASE + 233
RTD Alpha	IVI_CLASS_ATTR_BASE + 241
RTD Resistance	IVI_CLASS_ATTR_BASE + 242
Thermistor Resistance	IVI_CLASS_ATTR_BASE + 251
Sample Count	IVI_CLASS_ATTR_BASE + 301
Sample Trigger	IVI_CLASS_ATTR_BASE + 302
Sample Interval	IVI_CLASS_ATTR_BASE + 303
Trigger Count	IVI_CLASS_ATTR_BASE + 304
Measure Complete Destination	IVI_CLASS_ATTR_BASE + 305
Aperture Time	IVI_CLASS_ATTR_BASE + 321
Aperture Time Units	IVI_CLASS_ATTR_BASE + 322
Auto Range Value	IVI_CLASS_ATTR_BASE + 331
Auto Zero	IVI_CLASS_ATTR_BASE + 332
Powerline Freq	IVI_CLASS_ATTR_BASE + 333
Trigger Slope	IVI_CLASS_ATTR_BASE + 334

18.1. IviDmm Obsolete Attribute Names

The following attribute names are reserved by the IviDmm specification 1.0. Future versions of this specification cannot use these names:

- Resolution

18.2. IviDmm Obsolete Attribute ID Values

The following attribute ID values are reserved by the IviDmm specification 1.0. Future versions of this specification cannot use these values:

- `IVI_CLASS_ATTR_BASE + 3`

19.IviDmm Attribute Value Definitions

This section specifies the actual value for each defined attribute value.

Aperture Time Units

<i>Value Name</i>	<i>Language</i>	<i>Identifier</i>	<i>Actual Value</i>
Seconds	.NET	Seconds	0
	C	IVIDMM_VAL_SECONDS	0
	COM	IviDmmApertureSeconds	0
Power Line Cycles	.NET	PowerlineCycles	1
	C	IVIDMM_VAL_POWER_LINE_CYCLES	1
	COM	IviDmmAperturePowerLineCycles	1

Auto Range

(For C and COM, see value definitions for Range.)

<i>Value Name</i>	<i>Language</i>	<i>Identifier</i>	<i>Actual Value</i>
Auto Off	.NET	Auto.Off	0
Auto On	.NET	Auto.On	1
Auto Once	.NET	Auto.Once	2

Auto Zero

<i>Value Name</i>	<i>Language</i>	<i>Identifier</i>	<i>Actual Value</i>
Auto Zero Off	.NET	Auto.Off	0
	C	IVIDMM_VAL_AUTO_ZERO_OFF	0
	COM	IviDmmAutoZeroOff	0
Auto Zero On	.NET	Auto.On	1
	C	IVIDMM_VAL_AUTO_ZERO_ON	1
	COM	IviDmmAutoZeroOn	1
Auto Zero Once	.NET	Auto.Once	2
	C	IVIDMM_VAL_AUTO_ZERO_ONCE	2
	COM	IviDmmAutoZeroOnce	2
Auto Zero Class Extension Base	C	IVIDMM_VAL_AUTO_ZERO_CLASS_EXT_BASE	100

<i>Value Name</i>	<i>Language</i>	<i>Identifier</i>	<i>Actual Value</i>
Auto Zero Specific Extension Base	C	IVIDMM_VAL_AUTO_ZERO_SPECIFIC_EXT_BASE	1000
	COM	N/A	N/A
	.NET	N/A	N/A

Frequency Voltage Range

<i>Value Name</i>	<i>Language</i>	<i>Identifier</i>	<i>Actual Value</i>
Auto Range On	.NET	Auto.On	1
	C	IVIDMM_VAL_AUTO_RANGE_ON	-1.0
	COM	IviDmmFrequencyVoltageRangeAutoRangeOn	-1.0
Auto Range Off	.NET	Auto.Off	0
	C	IVIDMM_VAL_AUTO_RANGE_OFF	-2.0
	COM	IviDmmFrequencyVoltageRangeAutoRangeOff	-2.0
Frequency Volt Range Class Extension Base	C	IVIDMM_VAL_FREQ_VOLT_RANGE_CLASS_EXT_BASE	-100.0
Frequency Volt Range Specific Extension Base	C	IVIDMM_VAL_FREQ_VOLT_RANGE_SPECIFIC_EXT_BASE	-1000.0
	COM	N/A	-1000.0

Function

<i>Value Name</i>	<i>Language</i>	<i>Identifier</i>	<i>Actual Value</i>
DC Volts	.NET	DCVolts	0
	C	IVIDMM_VAL_DC_VOLTS	1
	COM	IviDmmFunctionDCVolts	1
AC Volts	.NET	ACVolts	1
	C	IVIDMM_VAL_AC_VOLTS	2
	COM	IviDmmFunctionACVolts	2
DC Current	.NET	DCCurrent	2
	C	IVIDMM_VAL_DC_CURRENT	3
	COM	IviDmmFunctionDCCurrent	3

<i>Value Name</i>	<i>Language</i>	<i>Identifier</i>	<i>Actual Value</i>
AC Current	.NET	ACCurrent	3
	C	IVIDMM_VAL_AC_CURRENT	4
	COM	IviDmmFunctionACCurrent	4
2 Wire Resistance	.NET	TwoWireRes	4
	C	IVIDMM_VAL_2_WIRE_RES	5
	COM	IviDmmFunction2WireRes	5
4 Wire Resistance	.NET	FourWireRes	5
	C	IVIDMM_VAL_4_WIRE_RES	101
	COM	IviDmmFunction4WireRes	101
AC Plus DC Volts	.NET	ACPlusDCVolts	6
	C	IVIDMM_VAL_AC_PLUS_DC_VOLTS	106
	COM	IviDmmFunctionACPlusDCVolts	106
AC Plus DC Current	.NET	ACPlusDCCurrent	7
	C	IVIDMM_VAL_AC_PLUS_DC_CURRENT	107
	COM	IviDmmFunctionACPlusDCCurrent	107
Frequency	.NET	Frequency	8
	C	IVIDMM_VAL_FREQ	104
	COM	IviDmmFunctionFreq	104
Period	.NET	Period	9
	C	IVIDMM_VAL_PERIOD	105
	COM	IviDmmFunctionPeriod	105
Temperature	.NET	Temperature	10
	C	IVIDMM_VAL_TEMPERATURE	108
	COM	IviDmmFunctionTemperature	108
Class Extension Base	C	IVIDMM_VAL_CLASS_EXT_BASE	500
Specific Extension Base	C	IVIDMM_VAL_SPECIFIC_EXT_BASE	1000
	COM	N/A	N/A
	.NET	N/A	N/A

The following values are reserved by the IviDmm specification 1.0 for the `IVIDMM_ATTR_FUNCTION` attribute. Future versions of this specification cannot use these values for this attribute:

- 102
- 103

- 109
- 110
- 111

Measure Complete Destination

<i>Value Name</i>	<i>Language</i>	<i>Identifier</i>	<i>Actual Value</i>
None	C	IVIDMM_VAL_NONE	-1
	COM	IviDmmMeasCompleteDestNone	-1
External	C	IVIDMM_VAL_EXTERNAL	2
	COM	IviDmmMeasCompleteDestExternal	2
TTL0	C	IVIDMM_VAL_TTL0	111
	COM	IviDmmMeasCompleteDestTTL0	111
TTL1	C	IVIDMM_VAL_TTL1	112
	COM	IviDmmMeasCompleteDestTTL1	112
TTL2	C	IVIDMM_VAL_TTL2	113
	COM	IviDmmMeasCompleteDestTTL2	113
TTL3	C	IVIDMM_VAL_TTL3	114
	COM	IviDmmMeasCompleteDestTTL3	114
TTL4	C	IVIDMM_VAL_TTL4	115
	COM	IviDmmMeasCompleteDestTTL4	115
TTL5	C	IVIDMM_VAL_TTL5	116
	COM	IviDmmMeasCompleteDestTTL5	116
TTL6	C	IVIDMM_VAL_TTL6	117
	COM	IviDmmMeasCompleteDestTTL6	117
TTL7	C	IVIDMM_VAL_TTL7	118
	COM	IviDmmMeasCompleteDestTTL7	118
ECL0	C	IVIDMM_VAL_ECL0	119
	COM	IviDmmMeasCompleteDestECL0	119
ECL1	C	IVIDMM_VAL_ECL1	120
	COM	IviDmmMeasCompleteDestECL1	120
PXI Star	C	IVIDMM_VAL_PXI_STAR	131
	COM	IviDmmMeasCompleteDestPXIStar	131
RTSI 0	C	IVIDMM_VAL_RTSI_0	140
	COM	IviDmmMeasCompleteDestRTSI0	140
RTSI 1	C	IVIDMM_VAL_RTSI_1	141
	COM	IviDmmMeasCompleteDestRTSI1	141
RTSI 2	C	IVIDMM_VAL_RTSI_2	142

<i>Value Name</i>	<i>Language</i>	<i>Identifier</i>	<i>Actual Value</i>
	COM	IviDmmMeasCompleteDestRTSI2	142
RTSI 3	C	IVIDMM_VAL_RTSI_3	143
	COM	IviDmmMeasCompleteDestRTSI3	143
RTSI 4	C	IVIDMM_VAL_RTSI_4	144
	COM	IviDmmMeasCompleteDestRTSI4	144
RTSI 5	C	IVIDMM_VAL_RTSI_5	145
	COM	IviDmmMeasCompleteDestRTSI5	145
RTSI 6	C	IVIDMM_VAL_RTSI_6	146
	COM	IviDmmMeasCompleteDestRTSI6	146
Trigger Source Class Extension Base	C	IVIDMM_VAL_TRIGGER_SOURCE_CLASS_EXT_BASE	500
Trigger Source Specific Extension Base	C	IVIDMM_VAL_TRIGGER_SOURCE_SPECIFIC_EXT_BASE	1000
	COM	N/A	1000

Range

<i>Value Name</i>	<i>Language</i>	<i>Identifier</i>	<i>Actual Value</i>
Auto Range On	C	IVIDMM_VAL_AUTO_RANGE_ON	-1.0
	COM	IviDmmAutoRangeOn	-1.0
Auto Range Off	C	IVIDMM_VAL_AUTO_RANGE_OFF	-2.0
	COM	IviDmmAutoRangeOff	-2.0
Auto Range Once	C	IVIDMM_VAL_AUTO_RANGE_ONCE	-3.0
	COM	IviDmmAutoRangeOnce	-3.0
Range Class Extension Base	C	IVIDMM_VAL_RANGE_CLASS_EXT_BASE	-100.0
Range Specific Extension Base	C	IVIDMM_VAL_RANGE_SPECIFIC_EXT_BASE	-1000.0
	COM	N/A	N/A
	.NET	N/A	N/A

Sample Trigger

<i>Value Name</i>	<i>Language</i>	<i>Identifier</i>	<i>Actual Value</i>
Immediate	C	IVIDMM_VAL_IMMEDIATE	1
	COM	IviDmmSampleTriggerImmediate	1
External	C	IVIDMM_VAL_EXTERNAL	2
	COM	IviDmmSampleTriggerExternal	2
Software Trigger	C	IVIDMM_VAL_SOFTWARE_TRIG	3
	COM	IviDmmSampleTriggerSwTrigFunc	3
TTL0	C	IVIDMM_VAL_TTL0	111
	COM	IviDmmSampleTriggerTTL0	111
TTL1	C	IVIDMM_VAL_TTL1	112
	COM	IviDmmSampleTriggerTTL1	112
TTL2	C	IVIDMM_VAL_TTL2	113
	COM	IviDmmSampleTriggerTTL2	113
TTL3	C	IVIDMM_VAL_TTL3	114
	COM	IviDmmSampleTriggerTTL3	114
TTL4	C	IVIDMM_VAL_TTL4	115
	COM	IviDmmSampleTriggerTTL4	115
TTL5	C	IVIDMM_VAL_TTL5	116
	COM	IviDmmSampleTriggerTTL5	116
TTL6	C	IVIDMM_VAL_TTL6	117
	COM	IviDmmSampleTriggerTTL6	117
TTL7	C	IVIDMM_VAL_TTL7	118
	COM	IviDmmSampleTriggerTTL7	118
ECL0	C	IVIDMM_VAL_ECL0	119
	COM	IviDmmSampleTriggerECL0	119
ECL1	C	IVIDMM_VAL_ECL1	120
	COM	IviDmmSampleTriggerECL1	120
PXI Star	C	IVIDMM_VAL_PXI_STAR	131
	COM	IviDmmSampleTriggerPXIStar	131
RTSI 0	C	IVIDMM_VAL_RTSI_0	140
	COM	IviDmmSampleTriggerRTSI0	140
RTSI 1	C	IVIDMM_VAL_RTSI_1	141

<i>Value Name</i>	<i>Language</i>	<i>Identifier</i>	<i>Actual Value</i>
	COM	IviDmmSampleTriggerRTSI1	141
RTSI 2	C	IVIDMM_VAL_RTSI_2	142
	COM	IviDmmSampleTriggerRTSI2	142
RTSI 3	C	IVIDMM_VAL_RTSI_3	143
	COM	IviDmmSampleTriggerRTSI3	143
RTSI 4	C	IVIDMM_VAL_RTSI_4	144
	COM	IviDmmSampleTriggerRTSI4	144
RTSI 5	C	IVIDMM_VAL_RTSI_5	145
	COM	IviDmmSampleTriggerRTSI5	145
RTSI 6	C	IVIDMM_VAL_RTSI_6	146
	COM	IviDmmSampleTriggerRTSI6	146
Interval	C	IVIDMM_VAL_INTERVAL	10
	COM	IviDmmSampleTriggerInterval	10
Trigger Source Class Extension Base	C	IVIDMM_VAL_TRIGGER_SOURCE_CLASS_EXT_BASE	500
Trigger Source Specific Extension Base	C	IVIDMM_VAL_TRIGGER_SOURCE_SPECIFIC_EXTENSION_BASE	1000
	COM	N/A	N/A

The following values are reserved by the IviDmm specification 1.0 for the Sample Trigger attribute. Future versions of this specification cannot use these values:

- 101

Thermocouple Reference Junction Type

<i>Value Name</i>	<i>Language</i>	<i>Identifier</i>	<i>Actual Value</i>
Thermocouple Reference Junction Internal	.NET	Internal	0
	C	IVIDMM_VAL_TEMP_REF_JUNC_INTERNAL	1
	COM	IviDmmRefJunctionTypeInternal	1
Thermocouple Reference Junction Fixed	.NET	Fixed	1
	C	IVIDMM_VAL_TEMP_REF_JUNC_FIXED	2
	COM	IviDmmRefJunctionTypeFixed	2
Reference Junction Class Extension Base	C	IVIDMM_VAL_TEMP_REF_JUNC_CLASS_EXTENSION_BASE	100

<i>Value Name</i>	<i>Language</i>	<i>Identifier</i>	<i>Actual Value</i>
Reference Junction Specific Extension Base	C	IVIDMM_VAL_TEMP_REF_JUNC_SPECIFIC_EXT_BASE	1000
	COM	N/A	1000

Thermocouple Type

<i>Value Name</i>	<i>Language</i>	<i>Identifier</i>	<i>Actual Value</i>
Thermocouple B	.NET	B	0
	C	IVIDMM_VAL_TEMP_TC_B	1
	COM	IviDmmThermocoupleTypeB	1
Thermocouple C	.NET	C	1
	C	IVIDMM_VAL_TEMP_TC_C	2
	COM	IviDmmThermocoupleTypeC	2
Thermocouple D	.NET	D	2
	C	IVIDMM_VAL_TEMP_TC_D	3
	COM	IviDmmThermocoupleTypeD	3
Thermocouple E	.NET	E	3
	C	IVIDMM_VAL_TEMP_TC_E	4
	COM	IviDmmThermocoupleTypeE	4
Thermocouple G	.NET	G	4
	C	IVIDMM_VAL_TEMP_TC_G	5
	COM	IviDmmThermocoupleTypeG	5
Thermocouple J	.NET	J	5
	C	IVIDMM_VAL_TEMP_TC_J	6
	COM	IviDmmThermocoupleTypeJ	6
Thermocouple K	.NET	K	6
	C	IVIDMM_VAL_TEMP_TC_K	7
	COM	IviDmmThermocoupleTypeK	7
Thermocouple N	.NET	N	7
	C	IVIDMM_VAL_TEMP_TC_N	8
	COM	IviDmmThermocoupleTypeN	8
Thermocouple R	.NET	R	8

<i>Value Name</i>	<i>Language</i>	<i>Identifier</i>	<i>Actual Value</i>
	C	IVIDMM_VAL_TEMP_TC_R	9
	COM	IviDmmThermocoupleTypeR	9
Thermocouple S	.NET	S	9
	C	IVIDMM_VAL_TEMP_TC_S	10
	COM	IviDmmThermocoupleTypeS	10
Thermocouple T	.NET	T	10
	C	IVIDMM_VAL_TEMP_TC_T	11
	COM	IviDmmThermocoupleTypeT	11
Thermocouple U	.NET	U	11
	C	IVIDMM_VAL_TEMP_TC_U	12
	COM	IviDmmThermocoupleTypeU	12
Thermocouple V	.NET	V	12
	C	IVIDMM_VAL_TEMP_TC_V	13
	COM	IviDmmThermocoupleTypeV	13
Thermocouple Type Class Extension Base	C	IVIDMM_VAL_TEMP_TC_TYPE_CLASS_EXT_BASE	100
Thermocouple Type Specific Extension Base	C	IVIDMM_VAL_TEMP_TC_TYPE_SPECIFIC_EXT_BASE	1000
	COM	N/A	1000

Temperature Transducer Type

<i>Value Name</i>	<i>Language</i>	<i>Identifier</i>	<i>Actual Value</i>
Thermocouple	.NET	Thermocouple	0
	C	IVIDMM_VAL_THERMOCOUPLE	1
	COM	IviDmmTransducerTypeThermocouple	1
Thermistor	.NET	Thermistor	1
	C	IVIDMM_VAL_THERMISTOR	2
	COM	IviDmmTransducerTypeThermistor	2
2 Wire RTD	.NET	TwoWireRtd	2
	C	IVIDMM_VAL_2_WIRE_RTD	3
	COM	IviDmmTransducerType2WireRtd	3
4 Wire RTD	.NET	FourWireRtd	3

<i>Value Name</i>	<i>Language</i>	<i>Identifier</i>	<i>Actual Value</i>
	C	IVIDMM_VAL_4_WIRE_RTD	4
	COM	IviDmmTransducerType4WireRtd	4
Transducer Class Extension Base	C	IVIDMM_VAL_TRANSDUCER_CLASS_EXT_BASE	100
Transducer Specific Extension Base	C	IVIDMM_VAL_TRANSDUCER_SPECIFIC_EXT_BASE	1000
	COM	N/A	1000

Trigger Delay

<i>Value Name</i>	<i>Language</i>	<i>Identifier</i>	<i>Actual Value</i>
Auto Delay On	C	IVIDMM_VAL_AUTO_DELAY_ON	-1.0
	COM	IviDmmTriggerDelayAutoDelayOn	-1.0
Auto Delay Off	C	IVIDMM_VAL_AUTO_DELAY_OFF	-2.0
	COM	IviDmmTriggerDelayAutoDelayOff	-2.0
Trigger Delay Class Extension Base	C	IVIDMM_VAL_TRIGGER_DELAY_CLASS_EXT_BASE	-100.0
Trigger Delay Specific Extension Base	C	IVIDMM_VAL_TRIGGER_DELAY_SPECIFIC_EXT_BASE	-1000.0
	COM	N/A	-1000.0

Trigger Slope

<i>Value Name</i>	<i>Language</i>	<i>Identifier</i>	<i>Actual Value</i>
Positive	.NET	Slope.Positive	0
	C	IVIDMM_VAL_POSITIVE	0
	COM	IviDmmTriggerSlopePositive	0
Negative	.NET	Slope.Negative	1
	C	IVIDMM_VAL_NEGATIVE	1
	COM	IviDmmTriggerSlopeNegative	1
Trigger Slope Class Extension Base	C	IVIDMM_VAL_TRIGGER_SLOPE_CLASS_EXT_BASE	100
Trigger Slope Specific Extension Base	C	IVIDMM_VAL_TRIGGER_SLOPE_SPECIFIC_EXT_BASE	1000

<i>Value Name</i>	<i>Language</i>	<i>Identifier</i>	<i>Actual Value</i>
	COM	N/A	1000

Trigger Source

<i>Value Name</i>	<i>Language</i>	<i>Identifier</i>	<i>Actual Value</i>
Immediate	C	IVIDMM_VAL_IMMEDIATE	1
	COM	IviDmmTriggerSourceImmediate	1
External	C	IVIDMM_VAL_EXTERNAL	2
	COM	IviDmmTriggerSourceExternal	2
Software Trigger	C	IVIDMM_VAL_SOFTWARE_TRIG	3
	COM	IviDmmTriggerSourceSwTrigFunc	3
TTL0	C	IVIDMM_VAL_TTL0	111
	COM	IviDmmTriggerSourceTTL0	111
TTL1	C	IVIDMM_VAL_TTL1	112
	COM	IviDmmTriggerSourceTTL1	112
TTL2	C	IVIDMM_VAL_TTL2	113
	COM	IviDmmTriggerSourceTTL2	113
TTL3	C	IVIDMM_VAL_TTL3	114
	COM	IviDmmTriggerSourceTTL3	114
TTL4	C	IVIDMM_VAL_TTL4	115
	COM	IviDmmTriggerSourceTTL4	115
TTL5	C	IVIDMM_VAL_TTL5	116
	COM	IviDmmTriggerSourceTTL5	116
TTL6	C	IVIDMM_VAL_TTL6	117
	COM	IviDmmTriggerSourceTTL6	117
TTL7	C	IVIDMM_VAL_TTL7	118
	COM	IviDmmTriggerSourceTTL7	118
ECL0	C	IVIDMM_VAL_ECL0	119
	COM	IviDmmTriggerSourceECL0	119
ECL1	C	IVIDMM_VAL_ECL1	120
	COM	IviDmmTriggerSourceECL1	120
PXI Star	C	IVIDMM_VAL_PXI_STAR	131

<i>Value Name</i>	<i>Language</i>	<i>Identifier</i>	<i>Actual Value</i>
	COM	IviDmmTriggerSourcePXIStar	131
RTSI 0	C	IVIDMM_VAL_RTSI_0	140
	COM	IviDmmTriggerSourceRTSI0	140
RTSI 1	C	IVIDMM_VAL_RTSI_1	141
	COM	IviDmmTriggerSourceRTSI1	141
RTSI 2	C	IVIDMM_VAL_RTSI_2	142
	COM	IviDmmTriggerSourceRTSI2	142
RTSI 3	C	IVIDMM_VAL_RTSI_3	143
	COM	IviDmmTriggerSourceRTSI3	143
RTSI 4	C	IVIDMM_VAL_RTSI_4	144
	COM	IviDmmTriggerSourceRTSI4	144
RTSI 5	C	IVIDMM_VAL_RTSI_5	145
	COM	IviDmmTriggerSourceRTSI5	145
RTSI 6	C	IVIDMM_VAL_RTSI_6	146
	COM	IviDmmTriggerSourceRTSI6	146
Trigger Source Class Extension Base	C	IVIDMM_VAL_TRIGGER_SOURCE_CLASS_EXT_BASE	500
Trigger Source Specific Extension Base	C	IVIDMM_VAL_TRIGGER_SOURCE_SPECIFIC_EXT_BASE	1000
	COM	N/A	1000

The following values are reserved by the IviDmm specification 1.0 for the IVIDMM_ATTR_TRIGGER_SOURCE attribute. Future versions of this specification cannot use these values:

- 101

19.1. IviDmm Obsolete Attribute Value Names

The following attribute value names are reserved by the IviDmm specification 1.0. Future versions of this specification cannot use these names:

- IVIDMM_VAL_DIODE
- IVIDMM_VAL_CONTINUITY
- IVIDMM_VAL_TEMP_C
- IVIDMM_VAL_TEMP_F
- IVIDMM_VAL_SIEMENS
- IVIDMM_VAL_COULOMBS
- IVIDMM_VAL_3_5_DIGITS
- IVIDMM_VAL_4_DIGITS
- IVIDMM_VAL_4_5_DIGITS

- IVIDMM_VAL_5_DIGITS
- IVIDMM_VAL_5_5_DIGITS
- IVIDMM_VAL_6_DIGITS
- IVIDMM_VAL_6_5_DIGITS
- IVIDMM_VAL_7_DIGITS
- IVIDMM_VAL_7_5_DIGITS
- IVIDMM_VAL_50_HERTZ
- IVIDMM_VAL_60_HERTZ
- IVIDMM_VAL_400_HERTZ
- IVIDMM_VAL_GPIB_GET
- IVIDMM_VAL_SW_TRIG_FUNC

20.IviDmm Function Parameter Value Definitions

This section specifies the actual values for each function parameter that defines values.

Read

Parameter: MaxTimeMilliseconds

<i>Value Name</i>	<i>Language</i>	<i>Identifier</i>	<i>Actual (hex)</i>
Max Time Immediate	C	IVIDMM_VAL_MAX_TIME_IMMEDIATE	0
	COM	IviDmmMaxTimeImmediate	0
Max Time Infinite	C	IVIDMM_VAL_MAX_TIME_INFINITE	0xFFFFFFFF
	COM	IviDmmMaxTimeInfinite	0xFFFFFFFF

Fetch

Parameter: MaxTimeMilliseconds

Same as defined for the MaxTimeMilliseconds parameter of the IviDmm_Read function.

Read Multi Point

Parameter: MaxTimeMilliseconds

Same as defined for the MaxTimeMilliseconds parameter of the IviDmm_Read function.

IviDmm_FetchMultiPoint

Parameter: MaxTimeMilliseconds

Same as defined for the MaxTimeMilliseconds parameter of the IviDmm_Read function.

21.IviDmm Error, Completion Code, and Exception Class Definitions

The table below specifies the actual value for each status code, and the actual exception class for each exception that the IviDmm class specification defines.

Table 21-1. IviDmm Error and Completion Codes

<i>Error Name</i>	<i>Description</i>		
	<i>Language</i>	<i>Identifier</i>	<i>Value(hex)</i>
Max Time Exceeded	Max Time Exceeded		
	.NET	Ivi.Driver.MaxTimeExceededException	IVI defined exception (see IVI 3.2)
	C	IVIDMM_ERROR_MAX_TIME_EXCEEDED	0xBFFA2003
	COM	E_IVIDMM_MAX_TIME_EXCEEDED	0x80042003
Trigger Not Software	The trigger source is not set to software trigger.		
	.NET	Ivi.Driver.TriggerNotSoftwareException	IVI defined exception (see IVI 3.2)
	C	IVIDMM_ERROR_TRIGGER_NOT_SOFTWARE	0xBFFA1001
	COM	E_IVIDMM_TRIGGER_NOT_SOFTWARE	0x80041001
Over Range	Over Range		
	.NET	N/A (warning not raised for over range)	N/A
	C	IVIDMM_WARN_OVER_RANGE	0x3FFA2001
	COM	S_IVIDMM_OVER_RANGE	0x00042001

Table 21-2 defines the recommended format of the message string associated with the errors. In C, these strings are returned by the Get Error function. In COM, these strings are the description contained in the ErrorInfo object. For .NET, exception default message strings are defined with the exception.

Note: In the description string table entries listed below, %s is always used to represent the component name.

Table 212. IviDmm Error Message Strings

Name	Message String
Max Time Exceeded	“%s: Max time exceeded”
Trigger Not Software	“%s: Trigger source is not set to software trigger.”
Over Range	“%s: Over range”

21.1. IviDmm Obsolete Error and Completion Code Names

The following error and completion codes names are reserved by the IviDmm specification 1.0. Future versions of this specification cannot use these names:

- Accuracy Unknown
- Accuracy Unknown While Autoranging

21.2. IviDmm Obsolete Error and Completion Code Values

The following error and completion codes values are reserved by the IviDmm specification 1.0. Future versions of this specification cannot use these values:

- `IVI_CLASS_ERROR_BASE + 1`
- `IVI_CLASS_ERROR_BASE + 2`

22.IviDmm Hierarchies

22.1.IviDmm ,NET Hierarchy

The full IviDmm.NET Hierarchy includes the Inherent Capabilities Hierarchy as defined in Section 4.1, *.NET Inherent Capabilities of IVI-3.2: Inherent Capabilities Specification*. To avoid redundancy, it is omitted from **Table 221**. IviDmm.NETHierarchy.

Table 221. IviDmm.NETHierarchy

.NET Interface Hierarchy	Generic Name	Type
Configure	Configure Measurement	M
MeasurementFunction	Function	P
Range	Range	P
AutoRange	Auto Range	P
Resolution	Resolution Absolute	P
AC		
ConfigureBandwidth	Configure AC Bandwidth	M
FrequencyMax	AC Max Freq	P
FrequencyMin	AC Min Freq	P
Advanced		
ApertureTime	Aperture Time	P
ApertureTimeUnits	Aperture Time Units	P
AutoZero	Auto Zero	P
PowerlineFrequency	Powerline Freq	P
Frequency		
VoltageRange	Freq Voltage Range	P
VoltageAutoRange	Voltage Auto Range	P
Measurement		
Initiate	Initiate	M
Abort	Abort	M
Fetch	Fetch	M
FetchMultiPoint	Fetch Multi Point	M
Read	Read	M
ReadMultiPoint	Read Multi Point	M
SendSoftwareTrigger	Send Software Trigger	M
Temperature		

Table 221. IviDmm.NETHierarchy

.NET Interface Hierarchy	Generic Name	Type
TransducerType	Temperature Transducer Type	P
Rtd		
Configure	Configure RTD	M
Alpha	Temperature RTD Alpha	P
Resistance	Temperature RTD Resistance	P
Thermocouple		
Configure	Configure Thermocouple	M
FixedReferenceJunction	Temp TC Fixed Reference Junction	P
ReferenceJunctionType	Temp TC Reference Junction Type	P
Type	Temp TC Type	P
Thermistor		
Resistance	Temperature Thermistor Resistance	P
Trigger		
Configure	Configure Trigger	M
Slope	Trigger Slope	P
Delay	Trigger Delay	P
DelayAuto	Trigger Delay Auto	P
MeasurementCompleteDestination	Measurement Complete Dest	P
Source	Trigger Source	P
MultiPoint		
Configure	Configure Multi Point	M
Count	Trigger Count	P
SampleCount	Sample Count	P
SampleInterval	Sample Interval	P
SampleTrigger	Sample Trigger	P

22.1.1.IviDmm.NET Interfaces

In addition to implementing IVI inherent capabilities interfaces, IviDmm-interfaces contain interface reference properties for accessing the following IviDmm interfaces:

- IviDmmAC
- IviDmmAdvanced
- IviDmmFrequency
- IviDmmMeasurement
- IviDmmTemperature
- IviDmmTrigger

The IviDmmTemperature interface contains interface reference properties for accessing additional the following IviDmm temperature interfaces:

- IviDmmRtd
- IviDmmThermocouple
- IviDmmThermistor

The IviDmmTrigger interface contains interface reference properties for accessing additional the following IviDmm trigger interfaces:

- IviDmmMultiPoint

22.1.2..NET Interface Reference Properties

Interface reference properties are used to navigate the IviDmm .NET hierarchy. This section describes the interface reference properties that the IiIviDmm, IiIviDmmTemperature, and IiIviDmmTrigger interfaces define.

Data Type	.NET Property Name
IiIviDmmAC	AC
IiIviDmmAdvanced	Advanced
IiIviDmmFrequency	Frequency
IiIviDmmMeasurement	Measurement
IiIviDmmTemperature	Temperature
IiIviDmmTrigger	Trigger
IiIviDmmRtd	Temperature.Rtd
IiIviDmmThermocouple	Temperature.Thermocouple
IiIviDmmThermistor	Temperature.Thermistor
IiIviDmmMultiPoint	Trigger.MultiPoint

22.2.IviDmm COM Hierarchy

The full IviDmm COM Hierarchy includes the Inherent Capabilities Hierarchy as defined in Section 4.2, *COM Inherent Capabilities* of *IVI-3.2: Inherent Capabilities Specification*. To avoid redundancy, it is omitted from Table 2-1..

Table 222. IviDmm COM Hierarchy

COM Interface Hierarchy	Generic Name	Type
Configure	Configure Measurement	M
Function	Function	P
Range	Range	P
Resolution	Resolution Absolute	P
AC		
ConfigureBandwidth	Configure AC Bandwidth	M
FrequencyMax	AC Max Freq	P
FrequencyMin	AC Min Freq	P
Advanced		
ActualRange	Auto Range Value	P
ApertureTime	Aperture Time	P
ApertureTimeUnits	Aperture Time Units	P
AutoZero	Auto Zero	P
PowerlineFrequency	Powerline Freq	P
Frequency		
VoltageRange	Freq Voltage Range	P
Measurement		
Initiate	Initiate	M
Abort	Abort	M
Fetch	Fetch	M
FetchMultiPoint	Fetch Multi Point	M
Read	Read	M
ReadMultiPoint	Read Multi Point	M
SendSoftwareTrigger	Send Software Trigger	M
IsOverRange	Is Over Range	M
Temperature		
TransducerType	Temperature Transducer Type	P
RTD		
Configure	Configure RTD	M

Table 222. IviDmm COM Hierarchy

COM Interface Hierarchy	Generic Name	Type
Alpha	Temperature RTD Alpha	P
Resistance	Temperature RTD Resistance	P
Thermocouple		
Configure	Configure Thermocouple	M
FixedRefJunction	Temp TC Fixed Reference Junction	P
RefJunctionType	Temp TC Reference Junction Type	P
Type	Temp TC Type	P
Thermistor		
Resistance	Temperature Thermistor Resistance	P
Trigger		
Configure	Configure Trigger	M
Slope	Trigger Slope	P
Delay	Trigger Delay	P
Source	Trigger Source	P
MultiPoint		
Configure	Configure Multi Point	M
MeasurementComplete	Measurement Complete Dest	P
Count	Trigger Count	P
SampleCount	Sample Count	P
SampleInterval	Sample Interval	P
SampleTrigger	Sample Trigger	P

22.2.1.IviDmm COM Interfaces

In addition to implementing IVI inherent capabilities interfaces, IviDmm-interfaces contain interface reference properties for accessing the following IviDmm interfaces:

- IviDmmAC
- IviDmmAdvanced
- IviDmmFrequency
- IviDmmMeasurement
- IviDmmTemperature
- IviDmmTrigger

The IviDmmTemperature interface contains interface reference properties for accessing additional the following IviDmm temperature interfaces:

- IviDmmRTD
- IviDmmThermocouple
- IviDmmThermistor

The IviDmmTrigger interface contains interface reference properties for accessing additional the following IviDmm trigger interfaces:

- IviDmmMultiPoint

Table 223. IviDmm lists the interfaces that this specification defines and their GUIDs.

Table 223. IviDmm Interface GUIDs

Interface	GUID
IiIviDmm	{ 47ed51e8-a398-11d4-ba58-000064657374 }
IiIviDmmAC	{ 47ed51ec-a398-11d4-ba58-000064657374 }
IiIviDmmAdvanced	{ 47ed51ed-a398-11d4-ba58-000064657374 }
IiIviDmmFrequency	{ 47ed51ee-a398-11d4-ba58-000064657374 }
IiIviDmmMeasurement	{ 47ed51e9-a398-11d4-ba58-000064657374 }
IiIviDmmTemperature	{ 47ed51ef-a398-11d4-ba58-000064657374 }
IiIviDmmTrigger	{ 47ed51ea-a398-11d4-ba58-000064657374 }
IiIviDmmRTD	{ 47ed51f0-a398-11d4-ba58-000064657374 }
IiIviDmmThermocouple	{ 47ed51f1-a398-11d4-ba58-000064657374 }
IiIviDmmThermistor	{ 47ed51f2-a398-11d4-ba58-000064657374 }
IiIviDmmMultiPoint	{ 47ed51eb-a398-11d4-ba58-000064657374 }

22.2.2. Interface Reference Properties

Interface reference properties are used to navigate the IviDmm COM hierarchy. This section describes the interface reference properties that the IiIviDmm, IiIviDmmTemperature, and IiIviDmmTrigger interfaces define.

Data Type	COM Property Name
IiIviDmmAC	AC
IiIviDmmAdvanced	Advanced
IiIviDmmFrequency	Frequency
IiIviDmmMeasurement	Measurement
IiIviDmmTemperature	Temperature
IiIviDmmTrigger	Trigger
IiIviDmmRTD	Temperature.RTD
IiIviDmmThermocouple	Temperature.Thermocouple
IiIviDmmThermistor	Temperature.Thermistor
IiIviDmmMultiPoint	Trigger.MultiPoint

22.2.3. IviDmm COM Category

The IviDmm class COM Category shall be “IviDmm”, and the Category ID (CATID) shall be {47ed5154-a398-11d4-ba58-000064657374}.

22.3. IviDmm C Function Hierarchy

The IviDmm class function hierarchy is shown in the following table.

Table 22-1. IviDmm Function Hierarchy

Name or Class	Function Name
Configuration...	
Configure Measurement	IviDmm_ConfigureMeasurement
Specific Measurements...	
Configure AC Bandwidth	IviDmm_ConfigureACBandwidth
Configure Frequency Voltage Range	IviDmm_ConfigureFrequencyVoltageRange
Temperature...	
Configure Transducer Type	IviDmm_ConfigureTransducerType
Configure Thermocouple	IviDmm_ConfigureThermocouple
Configure Fixed Reference Junction	IviDmm_ConfigureFixedRefJunction
Configure RTD	IviDmm_ConfigureRTD
Configure Thermistor	IviDmm_ConfigureThermistor
Trigger...	
Configure Trigger	IviDmm_ConfigureTrigger
Configure Trigger Slope	IviDmm_ConfigureTriggerSlope
MultiPoint...	
Configure Multi-Point	IviDmm_ConfigureMultiPoint
Configure Measurement Complete Destination	IviDmm_ConfigureMeasCompleteDest
Measurement Operation Options...	
Configure Auto Zero Mode	IviDmm_ConfigureAutoZeroMode
Configure Power Line Frequency	IviDmm_ConfigurePowerLineFrequency
Configuration Information...	
Get Auto Range Value	IviDmm_GetAutoRangeValue
Get Aperture Time Info	IviDmm_GetApertureTimeInfo
Measurement...	
Read	IviDmm_Read
Read Multi-Point	IviDmm_ReadMultiPoint
Low Level Measurement...	
Initiate	IviDmm_Initiate
Send Software Trigger	IviDmm_SendSoftwareTrigger
Fetch	IviDmm_Fetch

Name or Class	Function Name
Fetch Multi-Point	IviDmm_FetchMultiPoint
Abort	IviDmm_Abort
Is OverRange	IviDmm_IsOverRange

22.3.1. Ivi Dmm Obsolete Function Names

The following function names are reserved by the IviDmm specification 1.0. The future versions of this specification cannot use these names:

- `IviDmm_Configure`
- `IviDmm_CalculateAccuracy`
- `IviDmm_SendSWTrigger`

22.4. IviDmm C Attribute Hierarchy

The IviDmm class attribute hierarchy is shown in the following table.

Table 224 IviDmm C Attributes Hierarchy

Category or Generic Attribute Name	C Defined Constant
<i>Basic Operation</i>	
Function	IVIDMM_ATTR_FUNCTION
Range	IVIDMM_ATTR_RANGE
Resolution	IVIDMM_ATTR_RESOLUTION_ABSOLUTE
<i>Trigger</i>	
Trigger Source	IVIDMM_ATTR_TRIGGER_SOURCE
Trigger Delay	IVIDMM_ATTR_TRIGGER_DELAY
Trigger Slope	IVIDMM_ATTR_TRIGGER_SLOPE
<i>AC Measurements</i>	
AC Minimum Frequency	IVIDMM_ATTR_AC_MIN_FREQ
AC Maximum Frequency	IVIDMM_ATTR_AC_MAX_FREQ
<i>Frequency Measurements</i>	
Frequency Voltage Range	IVIDMM_ATTR_FREQ_VOLTAGE_RANGE
<i>Temperature Measurements</i>	
Transducer Type	IVIDMM_ATTR_TEMP_TRANSDUCER_TYPE
<i>Thermocouple</i>	
Fixed Reference Junction	IVIDMM_ATTR_TEMP_TC_FIXED_REF_JUNC
Reference Junction Type	IVIDMM_ATTR_TEMP_TC_REF_JUNC_TYPE
Thermocouple Type	IVIDMM_ATTR_TEMP_TC_TYPE
<i>Resistance Temperature Device</i>	
RTD Resistance	IVIDMM_ATTR_TEMP_RTD_RES
RTD Alpha	IVIDMM_ATTR_TEMP_RTD_ALPHA
<i>Thermistor</i>	
Thermistor Resistance	IVIDMM_ATTR_TEMP_THERMISTOR_RES
<i>Multi-Point Acquisition</i>	

Table 224 IviDmm C Attributes Hierarchy

Category or Generic Attribute Name	C Defined Constant
Trigger Count	IVIDMM_ATTR_TRIGGER_COUNT
Sample Count	IVIDMM_ATTR_SAMPLE_COUNT
Sample Trigger	IVIDMM_ATTR_SAMPLE_TRIGGER
Sample Interval	IVIDMM_ATTR_SAMPLE_INTERVAL
Meas Complete Destination	IVIDMM_ATTR_MEAS_COMPLETE_DEST
<i>Configuration Information</i>	
Aperture Time	IVIDMM_ATTR_APERTURE_TIME
Aperture Time Units	IVIDMM_ATTR_APERTURE_TIME_UNITS
Auto Range Value	IVIDMM_ATTR_AUTO_RANGE_VALUE
<i>Measurement Operation Options</i>	
Auto Zero	IVIDMM_ATTR_AUTO_ZERO
Powerline Frequency	IVIDMM_ATTR_POWERLINE_FREQ

A. Specific Driver Development Guidelines

A.1. Introduction

This section describes situations driver developers should be aware of when developing a specific instrument driver that complies with the IviDmm class.

A.2. Disabling Unused Extension Groups

Specific drivers are required to disable extension capability groups that an application program does not explicitly use. The specific driver can do so by setting the attributes of an extension capability group to the values that this section recommends. A specific driver can set these values for all extension capability groups when the *Prefix_init*, *Prefix_InitWithOptions*, or *Prefix_reset* functions execute. This assumes that the extension capability groups remain disabled until the application program explicitly uses them. For the large majority of instruments, this assumption is true.

Under certain conditions, a specific driver might have to implement a more complex approach. For some instruments, configuring a capability group might affect instrument settings that correspond to an unused extension capability group. If these instrument settings affect the behavior of the instrument, then this might result in an interchangeability problem. If this can occur, the specific driver must take appropriate action so that the instrument settings that correspond to the unused extension capability group do not affect the behavior of the instrument when the application program performs an operation that might be affected by those settings.

The remainder of this section recommends attribute values that effectively disable each extension capability group.

Disabling the IviDmm Measurement Extension Capability Groups

Some measurements that the user selects with the Function require an extension group to further configure the measurement. The values for the Function that require additional extension capability groups are shown in the following table.

- IviDmmACMeasurement
- IviDmmFrequencyMeasurement
- IviDmmTemperatureMeasurement
- IviDmmThermocouple
- IviDmmResistanceTemperatureDevice
- IviDmmThermistor

When the Function is set to one of these values, the corresponding extension capability group affects the behavior of the instruments. Otherwise, the extension capability group does not affect the behavior of the instrument and is effectively disabled. Therefore, this section does not recommend how to disable these extension capability groups.

Disabling the IviDmmMultiPoint Extension Group

Attribute values that effectively disable the IviDmmMultiPoint extension group are shown in the following table.

Table A-1. Values for Disabling the IviDmmMultiPoint Extension Group

Attribute	Value
Sample Count	1
Trigger Count	1

Disabling the IviDmmAutoZero Extension Group

Attribute values that effectively disable the IviDmmAutoZero extension group are shown in the following table.

Table A-2. Values for Disabling the IviDmmAutoZero Extension Group

Attribute	Value
Auto Zero	IVIDMM_VAL_AUTO_ZERO_OFF

Disabling the IviDmmTriggerSlope Extension Group

The purpose of disabling an extension capability group is to make instrument drivers that implement the capability group behave like instrument drivers that do not implement the capability group in cases where it is not used by the application program. The IviDmmTriggerSlope extension group affects the behavior of the instrument regardless of the value of the Trigger Slope attribute. Therefore, this section does not define any values that can disable the IviDmmTriggerSlope extension group.

Refer to Special Notes for Users in Section 12.1, IviDmmTriggerSlope Extension group Overview for further details.

Disabling the IviDmmPowerLineFrequency Extension Group

The purpose of disabling an extension capability group is to make instrument drivers that implement the capability group behave like instrument drivers that do not implement the capability group in cases where it is not used by the application program. The IviDmmPowerLineFrequency extension group affects the behavior of the instrument regardless of the value of the Power Line Freq attribute. Therefore, this section does not define any values that can disable the IviDmmPowerLineFrequency extension group.

Refer to Special Notes for Users in Section 17.1, IviDmmPowerLineFrequency Extension group Overview for further details.

A.3. **Special Consideration for Query Instrument Status**

Based on the value of Query Instr Status, the instrument may be queried by the specific driver to determine if it has encountered an error. In specific driver functions, the status check should not occur in the lowest-level signal generation functions `Prefix_Initiate`, `Prefix_Abort`, and `Prefix_Fetch`, `Prefix_FetchMultiPoint`, and `Prefix_SendSWTrigger`. These functions are intended to give the application developer low-level control over signal generation. When calling these functions, the application developer is responsible for checking the status of the instrument. Checking status in every function at this level would also add unnecessary overhead to the specific instrument driver.

A.4. **Special Considerations for Sample Trigger**

Some of the simpler DMMs on the market implement in hardware a simplified version of the IviDmmMultiPoint state model. These DMMs still have the ability to specify Trigger Count and Sample Count. However, they do not implement Sample Trigger and Sample Interval. When Sample Count is greater than 1, these DMMs typically execute the trigger delay for each sample. Therefore, the behavior between simple and sophisticated DMMs can vary greatly when performing multipoint scanning.

If you implement the `IviDmmMultiPoint` extension group on instruments that do not have a `Sample Trigger`, you should do the following to be interchangeable with DMMs that fully support the extension:

1. Implement `Sample Trigger` with the only supported value `Sample Interval`.
2. Implement `Sample Interval` where the only possible value is the present value for `Trigger Delay`.
3. Set the `Trigger Delay` attribute to invalidate the `Sample Interval` attribute.

By following these guidelines, you will maximize interchangeable behavior between all DMMs.

A.5. *Special Considerations for Auto Range Value*

The purpose of the attribute `Auto Range Value` is to return the range that the instrument has auto-ranged to when the attribute `Range` is set to `Auto Range On`. Since the value of `Auto Range` is likely to change as the input signal changes, drivers that may cache attributes should never cache this attribute.

B. Interchangeability Checking Rules

B.1. Introduction

IVI drivers have a feature called interchangeability checking. Interchangeability checking returns a warning when it encounters a situation where the application program might not produce the same behavior when the user attempts to use a different instrument.

B.2. When to Perform Interchangeability Checking

Interchangeability checking occurs when all of the following conditions are met:

- The Interchange Check attribute is set to True
- The user calls one of the following functions:
 - Initiate
 - Read
 - Read Multi Point

B.3. Interchangeability Checking Rules

Interchangeability checking is performed on a capability group basis. When enabled, interchangeability checking is always performed on the base capability group. In addition, interchangeability checking is performed on extension capability groups for which the user has ever set any of the attributes of the group. If the user has never set any attributes of an extension capability group, interchangeability checking is not performed on that group.

In general interchangeability warnings are generated if the following conditions are encountered:

- An attribute that affects the behavior of the instrument is not in a state that the user specifies.
- The user sets a class driver defined attribute to an instrument-specific value.
- The user configures the value of an attribute that the class defines as read-only. In a few cases the class drivers define read-only attributes that specific drivers might implement as read/write.

The remainder of this section defines additional rules and exceptions for each capability group.

IviDmmBase Capability Group

If the Function attribute is set to Temperature, the Resolution Absolute attribute is not required to be in a user specified state.

IviDmmACMeasurement Extension Group

If the Function attribute is not set to AC Volts, AC Current, AC Plus DC Volts, or AC Plus DC Current, then the following attributes are not required to be in a user specified state:

- AC Min Freq
- AC Max Freq

IviDmmFrequencyMeasurement Extension Group

If the Function attribute is not set to Frequency or Period, then the Freq Voltage Range attribute is not required to be in a user specified state.

IviDmmTemperatureMeasurement Extension Group

If the Function attribute is not set to Temperature, the Temperature Transducer Type attribute is not required to be in a user specified state.

IviDmmThermocouple Extension Group

If the Temperature Transducer Type attribute is not set to Thermocouple, then the following attributes are not required to be in a user specified state:

- Thermocouple Type
- Thermocouple Reference Junction Type
- Thermocouple Fixed Reference Junction

IviDmmResistanceTemperatureDevice Extension Group

If the Temperature Transducer Type attribute is not set to 2 Wire RTD or 4 Wire RTD, then the following attributes are not required to be in a user specified state:

- RTD Alpha
- RTD Resistance

IviDmmThermistor Extension Group

If the Temperature Transducer Type attribute is not set to Thermistor, the Thermistor Resistance attribute is not required to be in a user specified state.

IviDmmMultiPoint Extension Group

1. If the Sample Count attribute is set to 1, then the following attributes are not required to be in a user specified state:
 - Sample Trigger
 - Sample Interval
2. If the Sample Count attribute is set 1 and the Sample Trigger attribute is set to a value other than Interval, then the Sample Interval attribute is not required to be in a user specified state.

IviDmmTriggerSlope Extension Group

No additional interchangeability rules or exceptions are defined for the IviDmmTriggerSlope extension group.

IviDmmSoftwareTrigger Extension Group

No additional interchangeability rules or exceptions are defined for the IviDmmSoftwareTrigger extension group.

IviDmmDeviceInfo Extension Group

No additional interchangeability rules or exceptions are defined for the IviDmmDeviceInfo extension group.

IviDmmAutoRangeValue Extension Group

No additional interchangeability rules or exceptions are defined for the IviDmmAutoRangeValue extension group.

IviDmmAutoZero Extension Group

No additional interchangeability rules or exceptions are defined for the IviDmmAutoZero extension group.

IviDmmPowerLineFrequency Extension Group

No additional interchangeability rules or exceptions are defined for the IviDmmPowerLineFrequency extension group.